

**Black Hawk County, Iowa****12/01/2020**

Units: US Survey Feet

Point ID: **7146**Stamping on Disk: **94-146**

Type of Monument: *Berntsen 5/8" fluted "Top Security" rod, 6ft long with 2.5" dia. aluminum survey cap, NGS style access cover.*

Physical Details: *Station is flush with ground surface located in centerline of mowed ditch.*

NAD 83(NA2011) Latitude: **N42°34'12.02822"** Longitude: **W92°09'03.46920"**  
NAVD 88 Ortho Height: **949.550sft** Ellip. Ht: **847.819sft** **Geoid18(Conus)**

Horizontal Datum: NAD 83(NA2011) - Vertical Datum: NAVD 1988

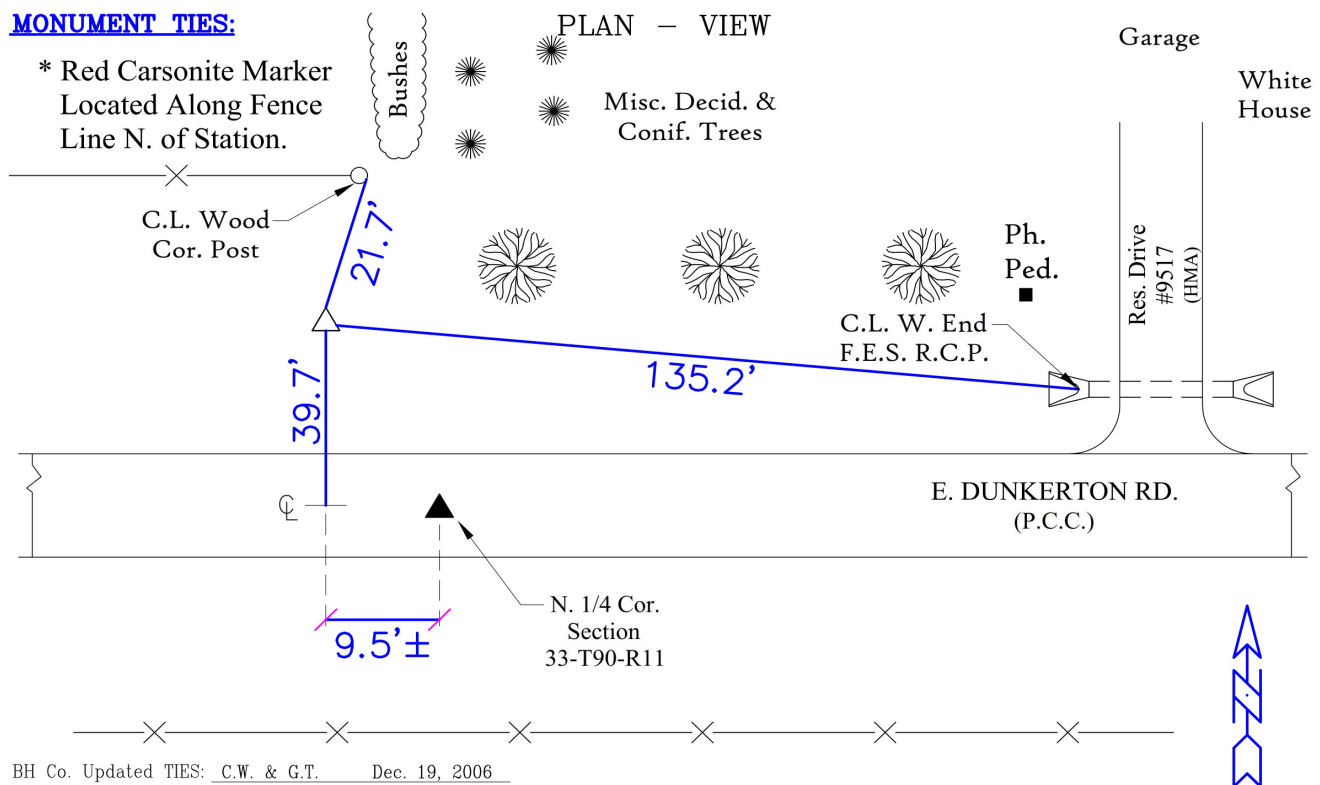
**Iowa North Zone (1401)** Northing: **3673667.621sft** Easting: **5284618.944sft**  
Mapping Angle: **0°54'51"** Combination Scale Factor: **0.9999062899**

Iowa Regional Coordinate System, Zone 5, Waterloo LCC

**IaRCS Zone 5** Northing: **8870861.390sft** Easting: **15526679.302sft**  
Mapping Angle: **0°04'02"** Combination Scale Factor: **0.9999924433**

**MONUMENT TIES:**

\* Red Carsonite Marker  
Located Along Fence  
Line N. of Station.



BH Co. Updated TIES: C.W. & G.T. Dec. 19, 2006  
TIE SOURCE: PRIOR REF. A.S.I. INC., CEDAR FALLS, IA.  
FORM PREPARED BY: A.A. & G.T. February 14, 2008

*This document was prepared by Dan Corbin, Inc. for Black Hawk County, Iowa.*



7146



Facing North

