

Black Hawk County, Iowa

Units: US Survey Feet

12/01/2020

Point ID: **7145**Stamping on Disk: **94-145**

Type of Monument: *Berntsen 5/8" fluted "Top Security" rod, 6ft long with 2.5" dia. aluminum survey cap, NGS style access cover.*

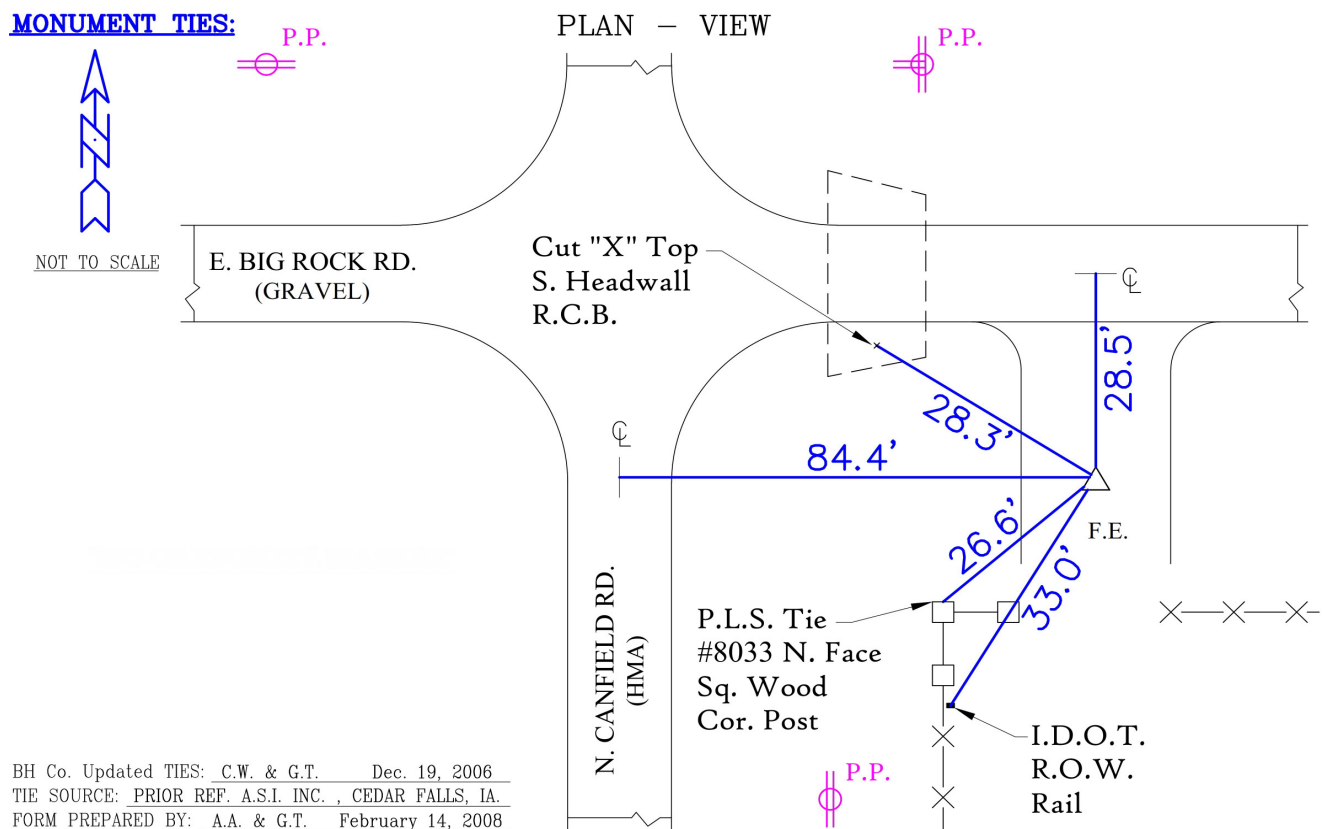
Physical Details: *Station is flush with ground surface located in centerline of field entrance.*

NAD 83(NA2011) Latitude: **N42°33'19.23160"** Longitude: **W92°09'37.81592"**
NAVD 88 Ortho Height: **988.990sft** Ellip. Ht: **887.231sft** Geoid18(Conus)

Horizontal Datum: NAD 83(NA2011) - Vertical Datum: NAVD 1988
Iowa North Zone (1401) Northing: **3668282.804sft** Easting: **5282133.996sft**
Mapping Angle: **0°54'28"** Combination Scale Factor: **0.9999048729**

Iowa Regional Coordinate System, Zone 5, Waterloo LCC

IaRCS Zone 5 Northing: **8865513.444sft** Easting: **15524114.785sft**
Mapping Angle: **0°03'38"** Combination Scale Factor: **0.9999909478**



This document was prepared by Dan Corbin, Inc. for Black Hawk County, Iowa.

7145



Facing West

