

Black Hawk County, Iowa**12/01/2020**

Units: US Survey Feet

Point ID: **7143**Stamping on Disk: **94-143**

Type of Monument: *Berntsen 5/8" fluted "Top Security" rod, 6ft long with 2.5" dia. aluminum survey cap, NGS style access cover.*

Physical Details: *Station is flush with ground surface located between TBKS and fence line.*

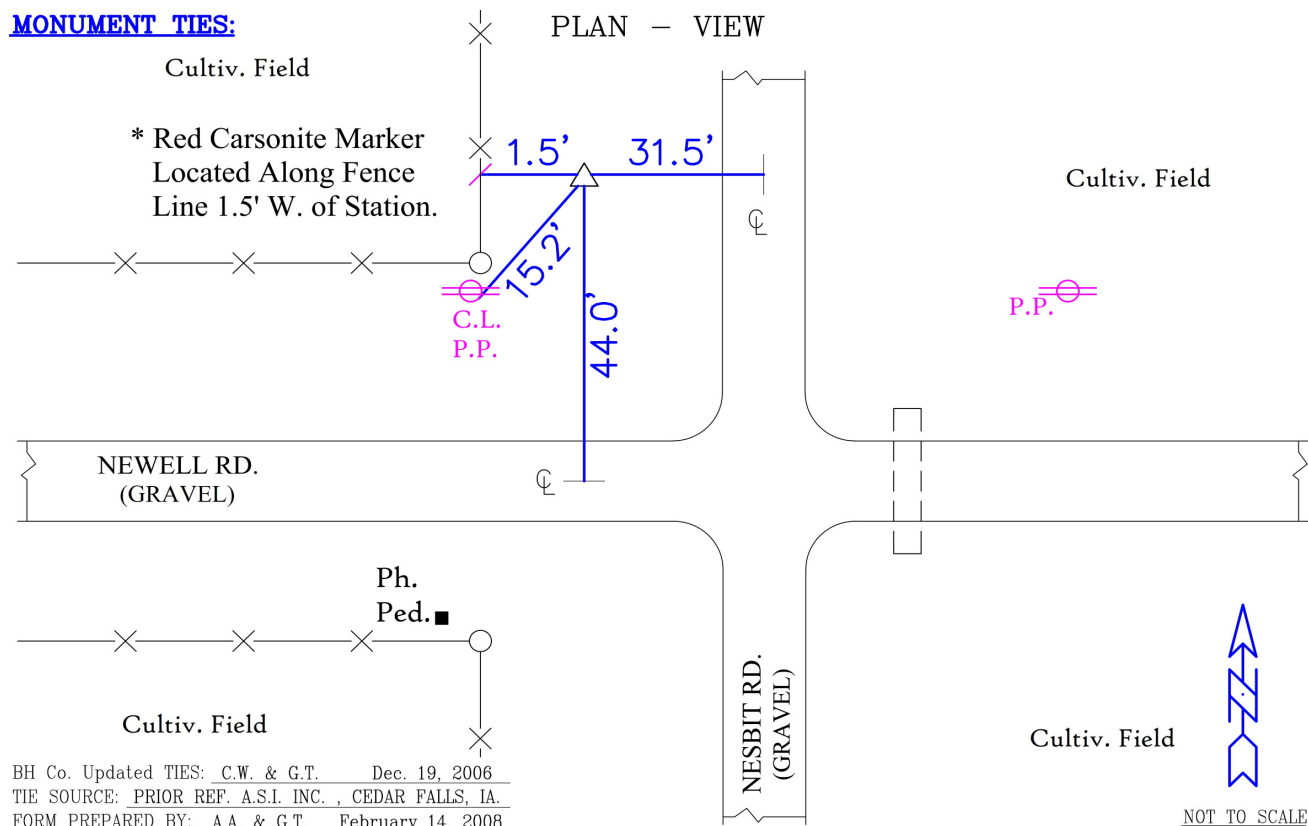
NAD 83(NA2011) Latitude: **N42°30'43.03287"** Longitude: **W92°08'28.20625"**
NAVD 88 Ortho Height: **987.755sft** Ellip. Ht: **886.097sft** **Geoid18(Conus)**

Horizontal Datum: NAD 83(NA2011) - Vertical Datum: NAVD 1988

Iowa North Zone (1401) Northing: **3652555.985sft** Easting: **5287597.162sft**
Mapping Angle: **0°55'15"** Combination Scale Factor: **0.9999066894**

Iowa Regional Coordinate System, Zone 5, Waterloo LCC

IaRCS Zone 5 Northing: **8849706.207sft** Easting: **15529345.267sft**
Mapping Angle: **0°04'25"** Combination Scale Factor: **0.9999925325**

MONUMENT TIES:

This document was prepared by Dan Corbin, Inc. for Black Hawk County, Iowa.

7143



Facing West

