

Black Hawk County, Iowa**12/01/2020**

Units: US Survey Feet

Point ID: **7141**Stamping on Disk: **94-141**

Type of Monument: *Berntsen 5/8" fluted "Top Security" rod, 6ft long with 2.5" dia. aluminum survey cap, NGS style access cover.*

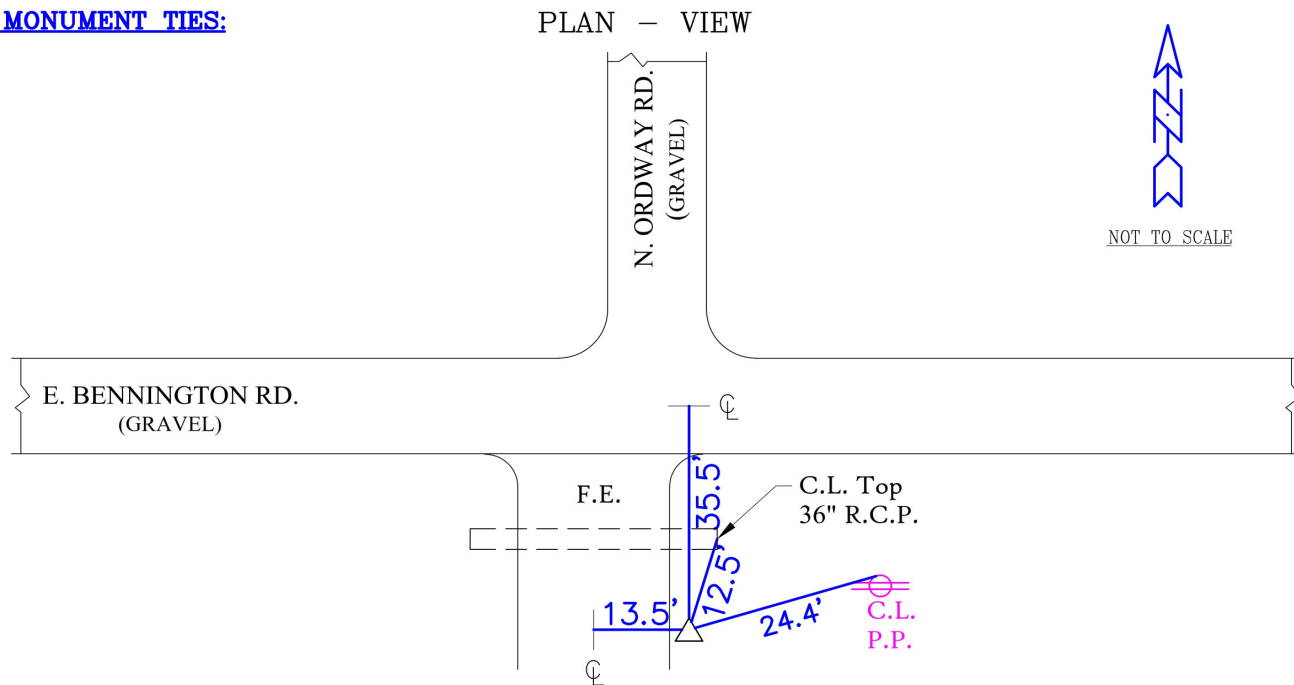
Physical Details: *Station is flush with ground surface located on east edge of field entrance. Field rock placed for protection.*

NAD 83(NA2011) Latitude: **N42°35'57.22517"** Longitude: **W92°11'57.98144"**
NAVD 88 Ortho Height: **960.642sft** Ellip. Ht: **858.712sft** **Geoid18(Conus)**

Horizontal Datum: NAD 83(NA2011) - Vertical Datum: NAVD 1988

Iowa North Zone (1401) Northing: **3684110.909sft** Easting: **5271399.047sft**Mapping Angle: **0°52'53"** Combination Scale Factor: **0.9999050336**

Iowa Regional Coordinate System, Zone 5, Waterloo LCC

IaRCS Zone 5 Northing: **8881499.922sft** Easting: **15513614.136sft**Mapping Angle: **0°02'03"** Combination Scale Factor: **0.9999913432****MONUMENT TIES:**

* Red Carsonite Marker
Located 3.5' S.E. of
Station.

BH Co. Updated TIES: C.W. & G.T. Jan. 09, 2007
TIE SOURCE: PRIOR REF. A.S.I. INC., CEDAR FALLS, IA.
FORM PREPARED BY: A.A. & G.T. February 14, 2008

This document was prepared by Dan Corbin, Inc. for Black Hawk County, Iowa.

7141



Facing East

