

Black Hawk County, Iowa

Units: US Survey Feet

12/01/2020

Point ID: **7140**Stamping on Disk: **94-140**

Type of Monument: *Berntsen 5/8" fluted "Top Security" rod, 6ft long with 2.5" dia. aluminum survey cap, NGS style access cover.*

Physical Details: *Station is flush with ground surface located 2.5' south of TBKS.*

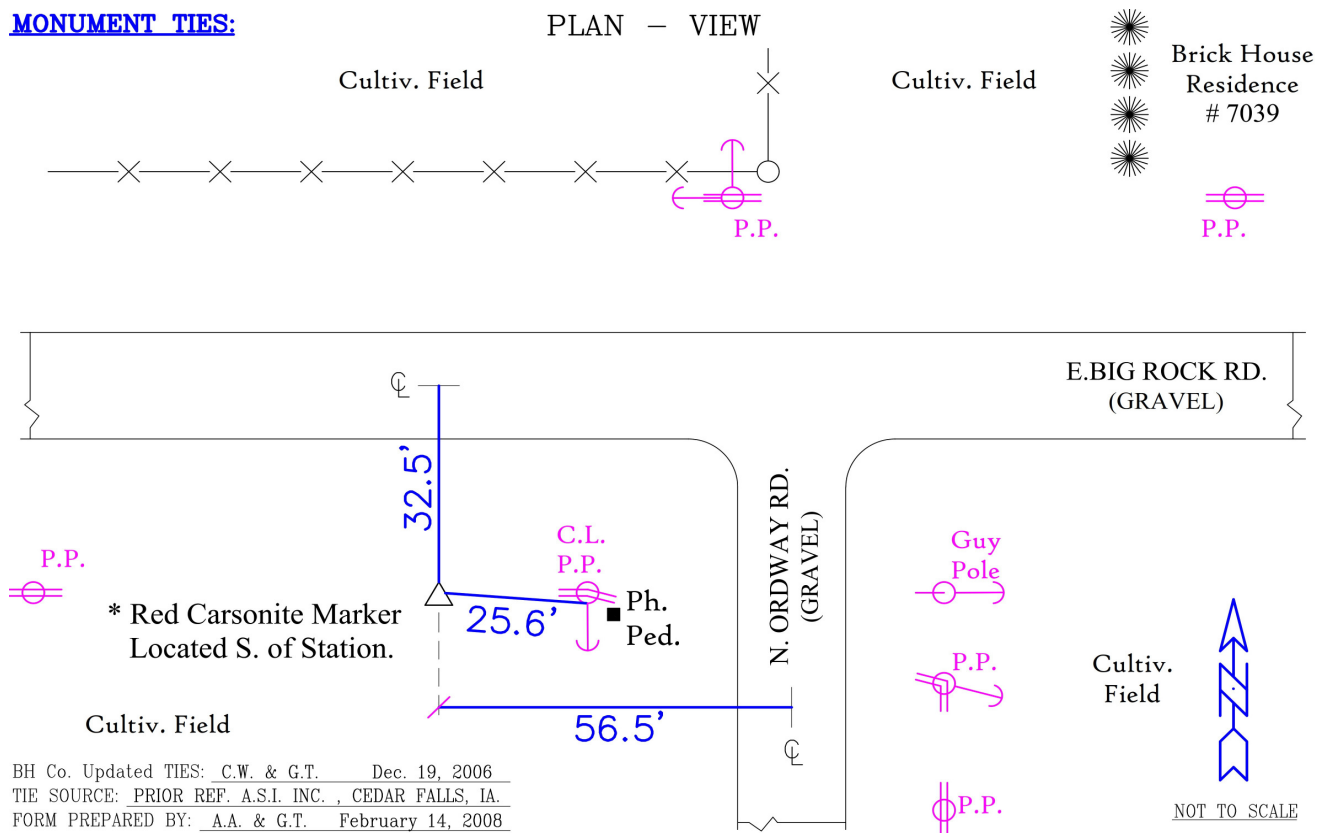
NAD 83(NA2011) Latitude: **N42°33'20.29108"** Longitude: **W92°11'59.12244"**
NAVD 88 Ortho Height: **970.811sft** Ellip. Ht: **868.911sft** Geoid18(Conus)

Horizontal Datum: NAD 83(NA2011) - Vertical Datum: NAVD 1988

Iowa North Zone (1401) Northing: **3668224.937sft** Easting: **5271558.055sft**
Mapping Angle: **0°52'52"** Combination Scale Factor: **0.9999057385**

Iowa Regional Coordinate System, Zone 5, Waterloo LCC

IaRCS Zone 5 Northing: **8865611.966sft** Easting: **15513538.234sft**
Mapping Angle: **0°02'03"** Combination Scale Factor: **0.9999918150**

MONUMENT TIES:

This document was prepared by Dan Corbin, Inc. for Black Hawk County, Iowa.

7140



Facing South

