

Black Hawk County, Iowa

Units: US Survey Feet

12/01/2020

Point ID: **7134**Stamping on Disk: **94-134**

Type of Monument: *Berntsen 5/8" fluted "Top Security" rod, 6ft long with 2.5" dia. aluminum survey cap, NGS style access cover.*

Physical Details: *Station is flush with ground surface located in southeast corner of field edge.*

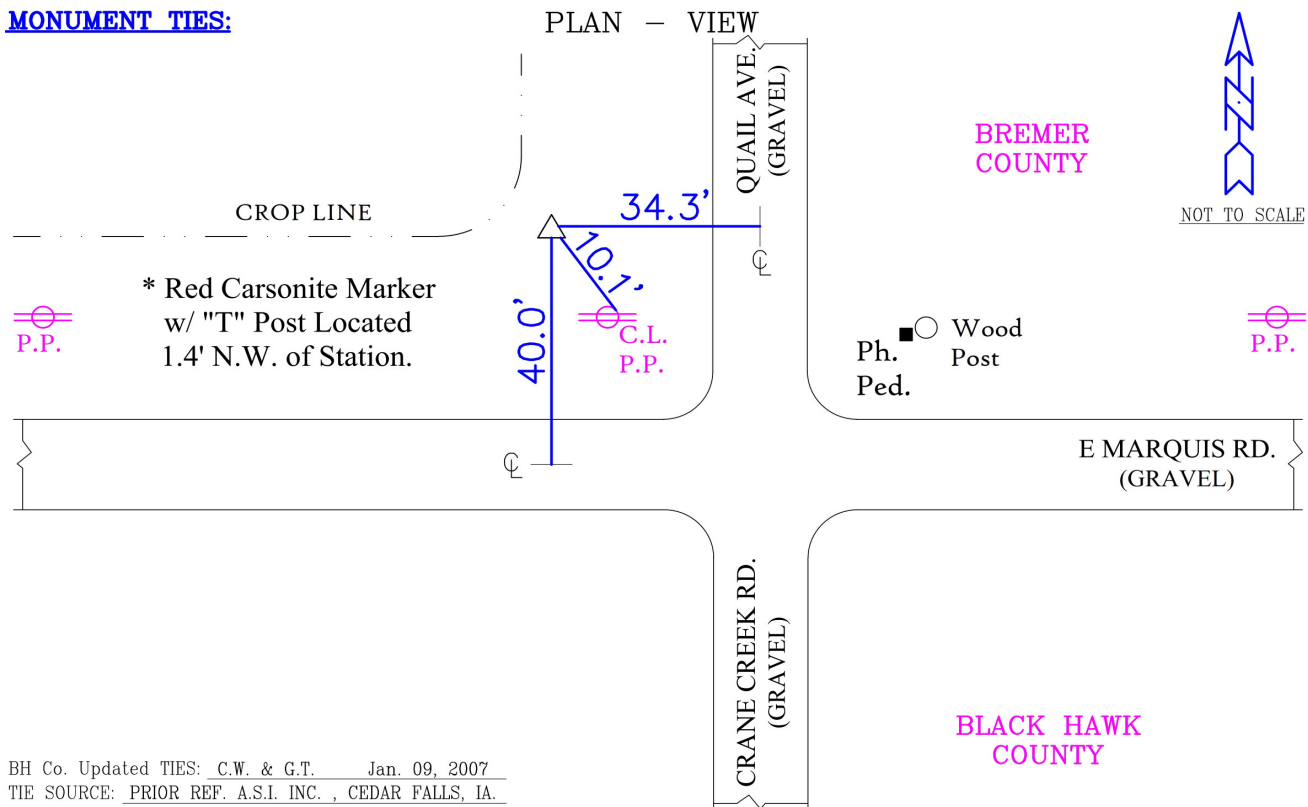
NAD 83(NA2011) Latitude: **N42°38'32.29484"** Longitude: **W92°14'20.30334"**
NAVD 88 Ortho Height: **1001.681sft** Ellip. Ht: **899.483sft** **Geoid18(Conus)**

Horizontal Datum: NAD 83(NA2011) - Vertical Datum: NAVD 1988

Iowa North Zone (1401) Northing: **3699645.814sft** Easting: **5260522.026sft**
Mapping Angle: **0°51'17"** Combination Scale Factor: **0.9999024726**

Iowa Regional Coordinate System, Zone 5, Waterloo LCC

IaRCS Zone 5 Northing: **8897195.309sft** Easting: **15502967.078sft**
Mapping Angle: **0°00'27"** Combination Scale Factor: **0.9999890125**

MONUMENT TIES:

This document was prepared by Dan Corbin, Inc. for Black Hawk County, Iowa.

7134



Facing Northwest

