

Black Hawk County, Iowa

Units: US Survey Feet

12/01/2020

Point ID: **7130**Stamping on Disk: **94-130**

Type of Monument: *Berntsen 5/8" fluted "Top Security" rod, 6ft long with 2.5" dia. aluminum survey cap, NGS style access cover.*

Physical Details: *Station is flush with ground surface in tall grass ditch.*

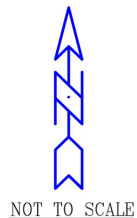
NAD 83(NA2011) Latitude: **N42°30'59.07356"** Longitude: **W92°15'31.07433"**
NAVD 88 Ortho Height: **903.967sft** Ellip. Ht: **801.826sft** Geoid18(Conus)

Horizontal Datum: NAD 83(NA2011) - Vertical Datum: NAVD 1988

Iowa North Zone (1401) Northing: **3653692.580sft** Easting: **5255907.049sft**
Mapping Angle: **0°50'29"** Combination Scale Factor: **0.9999105100**

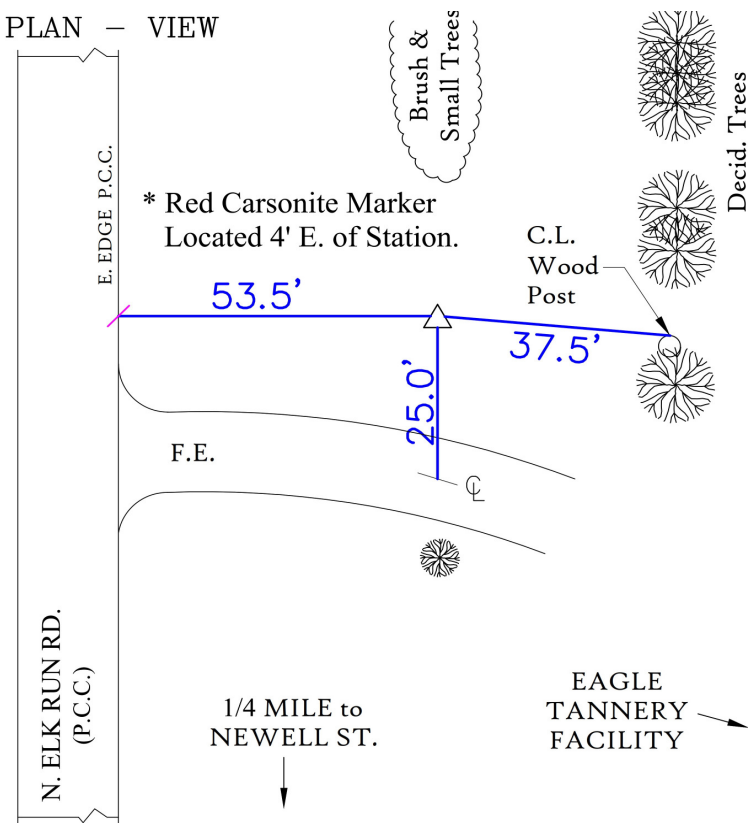
Iowa Regional Coordinate System, Zone 5, Waterloo LCC

IaRCS Zone 5 Northing: **8851311.378sft** Easting: **15497672.705sft**
Mapping Angle: **-0°00'21"** Combination Scale Factor: **0.9999963772**

MONUMENT TIES:

JOHN DEERE
PLANT

JOHN DEERE
CULTIV. FIELD
GROUND

PLAN - VIEW

BH Co. Updated TIES: C.W. & G.T. Dec. 19, 2006
TIE SOURCE: PRIOR REF. A.S.I. INC., CEDAR FALLS, IA.
FORM PREPARED BY: A.A. & G.T. February 14, 2008

This document was prepared by Dan Corbin, Inc. for Black Hawk County, Iowa.

7130



Facing East

