

Black Hawk County, Iowa**12/01/2020**

Units: US Survey Feet

Point ID: **7128**Stamping on Disk: **94-128**

Type of Monument: *Berntsen 5/8" fluted "Top Security" rod, 6ft long with 2.5" dia. aluminum survey cap, NGS style access cover.*

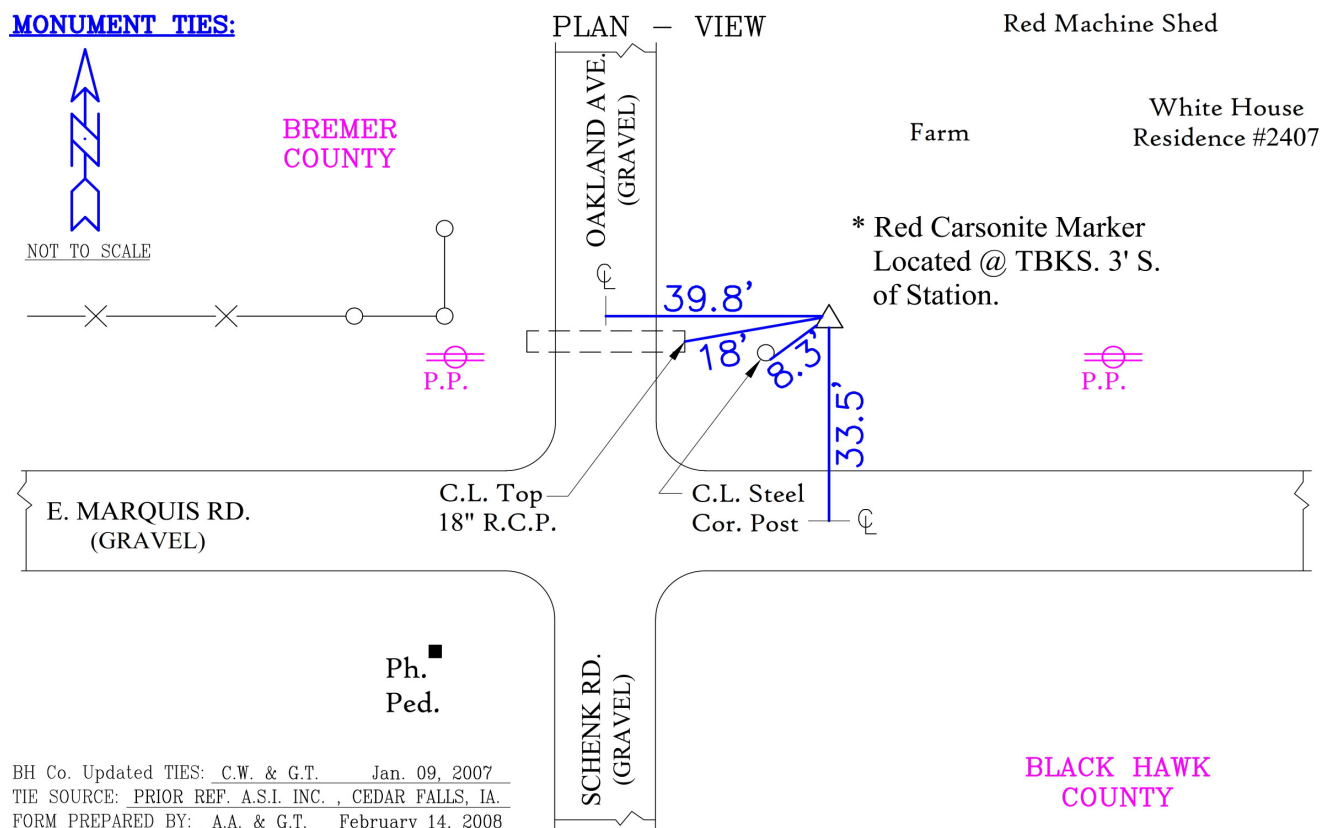
Physical Details: *Station is flush with ground surface at southwest corner of mowed lawn of local residence.*

NAD 83(NA2011) Latitude: **N42°38'32.26136"** Longitude: **W92°16'40.97881"**
NAVD 88 Ortho Height: **1007.529sft** Ellip. Ht: **905.100sft** **Geoid18(Conus)**

Horizontal Datum: NAD 83(NA2011) - Vertical Datum: NAVD 1988

Iowa North Zone (1401) Northing: **3699488.033sft** Easting: **5250009.506sft**Mapping Angle: **0°49'41"** Combination Scale Factor: **0.9999022042**

Iowa Regional Coordinate System, Zone 5, Waterloo LCC

IaRCS Zone 5 Northing: **8897192.978sft** Easting: **15492452.464sft**Mapping Angle: **-0°01'08"** Combination Scale Factor: **0.9999887441****MONUMENT TIES:**

BH Co. Updated TIES: C.W. & G.T. Jan. 09, 2007
TIE SOURCE: PRIOR REF. A.S.I. INC., CEDAR FALLS, IA.
FORM PREPARED BY: A.A. & G.T. February 14, 2008

This document was prepared by Dan Corbin, Inc. for Black Hawk County, Iowa.

7128



Facing Northeast

