

Black Hawk County, Iowa

Units: US Survey Feet

12/01/2020

Point ID: **7127**Stamping on Disk: **94-127**

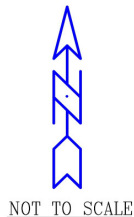
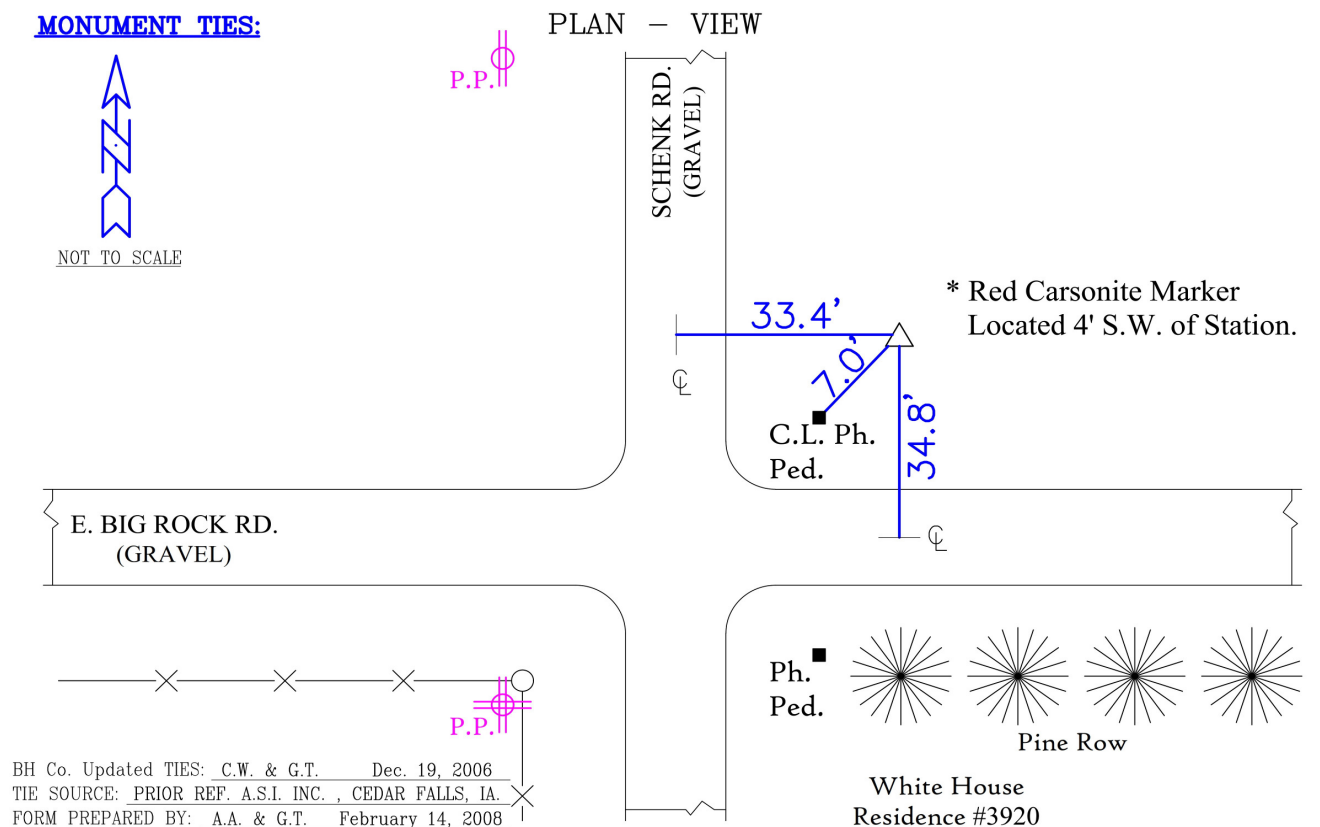
Type of Monument: *Berntsen 5/8" fluted "Top Security" rod, 6ft long with 2.5" dia. aluminum survey cap, NGS style access cover.*

Physical Details: *Station is flush with ground surface at southwest corner of field in TBKS.*

NAD 83(NA2011) Latitude: **N42°33'21.53302"** Longitude: **W92°16'41.44574"**
NAVD 88 Ortho Height: **978.775sft** Ellip. Ht: **876.498sft** Geoid18(Conus)

Horizontal Datum: NAD 83(NA2011) - Vertical Datum: NAVD 1988
Iowa North Zone (1401) Northing: **3668035.479sft** Easting: **5250429.213sft**
Mapping Angle: **0°49'41"** Combination Scale Factor: **0.9999053642**

Iowa Regional Coordinate System, Zone 5, Waterloo LCC
IaRCS Zone 5 Northing: **8865734.942sft** Easting: **15492407.081sft**
Mapping Angle: **-0°01'09"** Combination Scale Factor: **0.9999914425**

MONUMENT TIES:**PLAN - VIEW**

This document was prepared by Dan Corbin, Inc. for Black Hawk County, Iowa.

7127



Facing Northeast

