

Black Hawk County, Iowa

Units: US Survey Feet

12/01/2020

Point ID: **7124**Stamping on Disk: **94-124**

Type of Monument: *Berntsen 5/8" fluted "Top Security" rod, 6ft long with 2.5" dia. aluminum survey cap, NGS style access cover.*

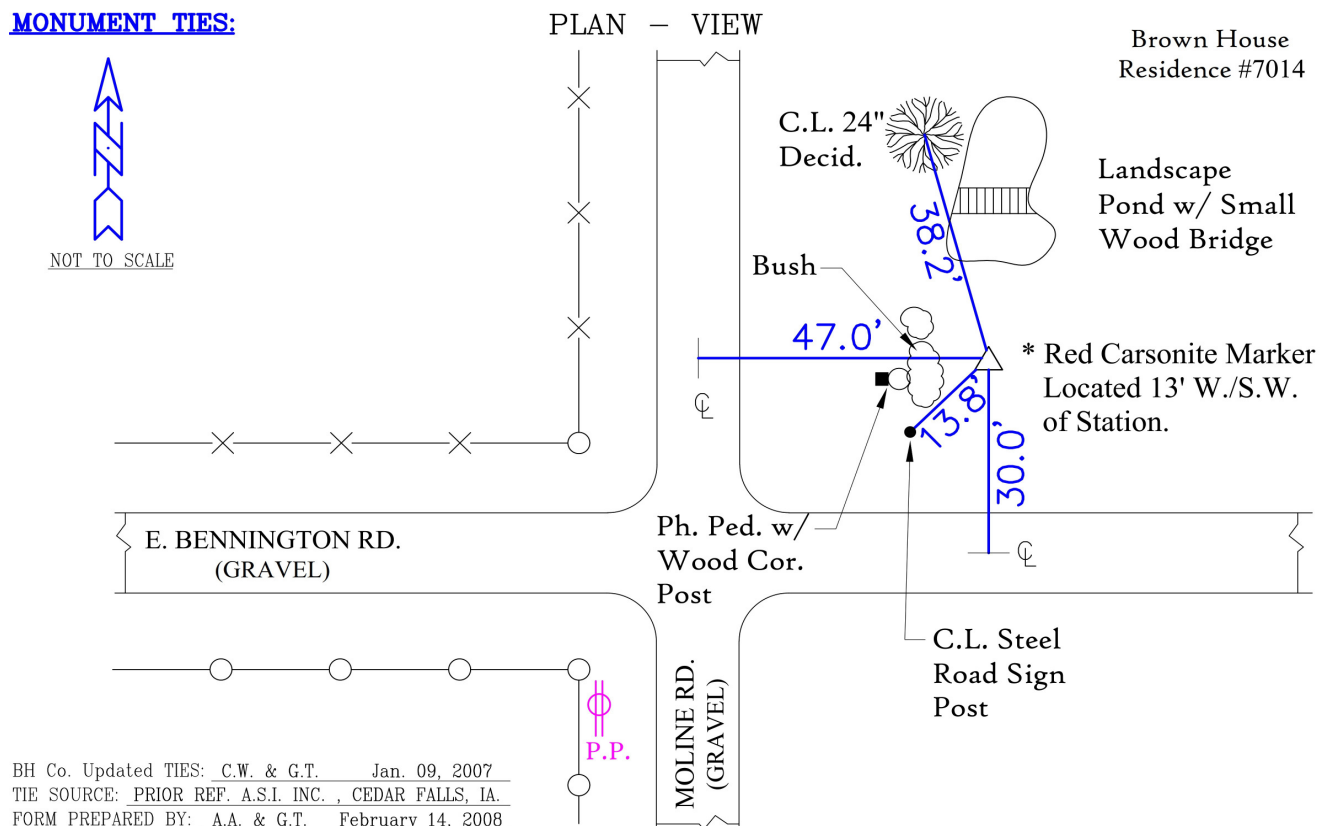
Physical Details: *Station is flush with ground surface located at southwest corner mowed lawn. Also 9.3' due east of base of bush.*

NAD 83(NA2011) Latitude: **N42°35'58.41281"** Longitude: **W92°19'03.58609"**
NAVD 88 Ortho Height: **998.865sft** Ellip. Ht: **896.242sft** **Geoid18(Conus)**

Horizontal Datum: NAD 83(NA2011) - Vertical Datum: NAVD 1988

Iowa North Zone (1401) Northing: **3683763.711sft** Easting: **5239570.311sft**Mapping Angle: **0°48'05"**Combination Scale Factor: **0.9999032330**

Iowa Regional Coordinate System, Zone 5, Waterloo LCC

IaRCS Zone 5 Northing: **8881623.377sft** Easting: **15481780.998sft**Mapping Angle: **-0°02'45"**Combination Scale Factor: **0.9999895443****MONUMENT TIES:**

This document was prepared by Dan Corbin, Inc. for Black Hawk County, Iowa.

7124



Facing Northeast

