

Black Hawk County, Iowa**12/01/2020**

Units: US Survey Feet

Point ID: **7123**Stamping on Disk: **94-123**

Type of Monument: *Berntsen 5/8" fluted "Top Security" rod, 6ft long with 2.5" dia. aluminum survey cap, NGS style access cover.*

Physical Details: *Station is flush with ground surface 1ft east of field entrance and 4.5ft west of TBKS.*

NAD 83(NA2011) Latitude: **N42°33'15.71168"** Longitude: **W92°19'04.58066"**
NAVD 88 Ortho Height: **946.271sft** Ellip. Ht: **843.720sft** **Geoid18(Conus)**

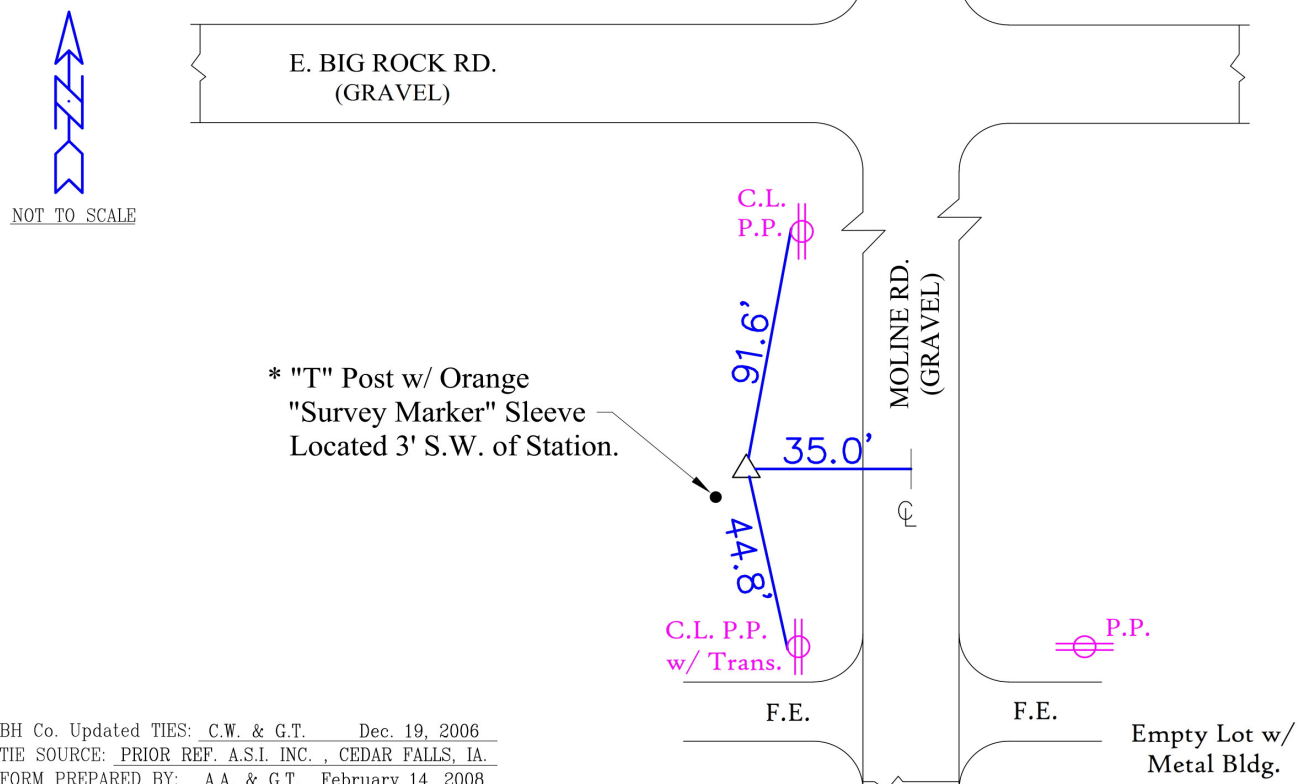
Horizontal Datum: NAD 83(NA2011) - Vertical Datum: NAVD 1988

Iowa North Zone (1401) Northing: **3667293.943sft** Easting: **5239726.224sft**Mapping Angle: **0°48'04"**Combination Scale Factor: **0.9999069860**

Iowa Regional Coordinate System, Zone 5, Waterloo LCC

IaRCS Zone 5 Northing: **8865151.684sft** Easting: **15481693.376sft**Mapping Angle: **-0°02'46"**Combination Scale Factor: **0.9999930558****MONUMENT TIES:**

PLAN - VIEW



BH Co. Updated TIES: C.W. & G.T. Dec. 19, 2006
TIE SOURCE: PRIOR REF. A.S.I. INC., CEDAR FALLS, IA.
FORM PREPARED BY: A.A. & G.T. February 14, 2008

This document was prepared by Dan Corbin, Inc. for Black Hawk County, Iowa.

7123



Facing South

