

Black Hawk County, Iowa**12/01/2020**

Units: US Survey Feet

Point ID: **7122**Stamping on Disk: **94-122**

Type of Monument: *Berntsen 5/8" fluted "Top Security" rod, 6ft long with 2.5" dia. aluminum survey cap, NGS style access cover.*

Physical Details: *Station is flush with ground surface south of curb in mowed residential (R.O.W.) area.*

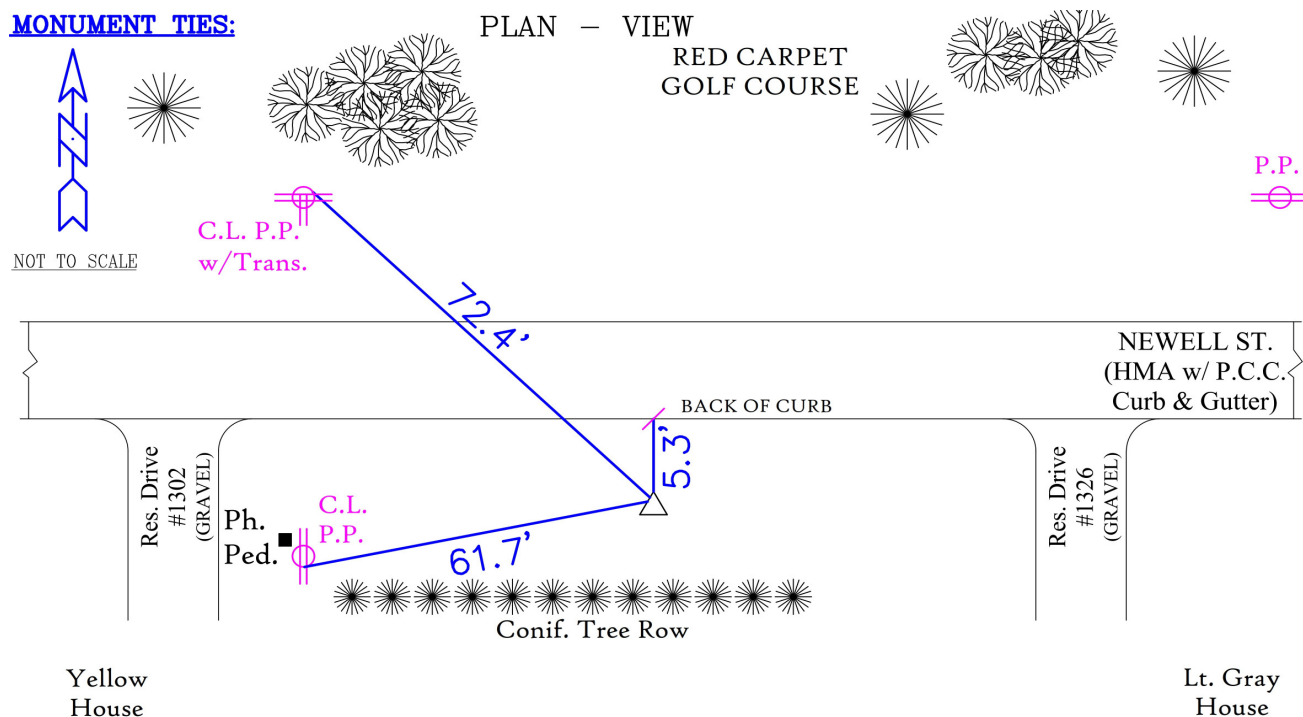
NAD 83(NA2011) Latitude: **N42°30'46.14039"** Longitude: **W92°19'01.67983"**
NAVD 88 Ortho Height: **879.375sft** Ellip. Ht: **776.914sft** **Geoid18(Conus)**

Horizontal Datum: NAD 83(NA2011) - Vertical Datum: NAVD 1988

Iowa North Zone (1401) Northing: **3652157.358sft** Easting: **5240155.156sft**
Mapping Angle: **0°48'06"** Combination Scale Factor: **0.9999118673**

Iowa Regional Coordinate System, Zone 5, Waterloo LCC

IaRCS Zone 5 Northing: **8850009.110sft** Easting: **15481898.480sft**
Mapping Angle: **-0°02'44"** Combination Scale Factor: **0.9999977155**

MONUMENT TIES:

BH Co. Updated TIES: C.W. & G.T. Dec. 20, 2006
TIE SOURCE: PRIOR REF. A.S.I. INC., CEDAR FALLS, IA.
FORM PREPARED BY: A.A. & G.T. February 14, 2008

"NO CARSONITE MARKER"

This document was prepared by Dan Corbin, Inc. for Black Hawk County, Iowa.

7122



Facing South

