

Black Hawk County, Iowa

Units: US Survey Feet

12/01/2020

Point ID: **7121**Stamping on Disk: **94-121**

Type of Monument: *Berntsen 5/8" fluted "Top Security" rod, 6ft long with 2.5" dia. aluminum survey cap, NGS style access cover.*

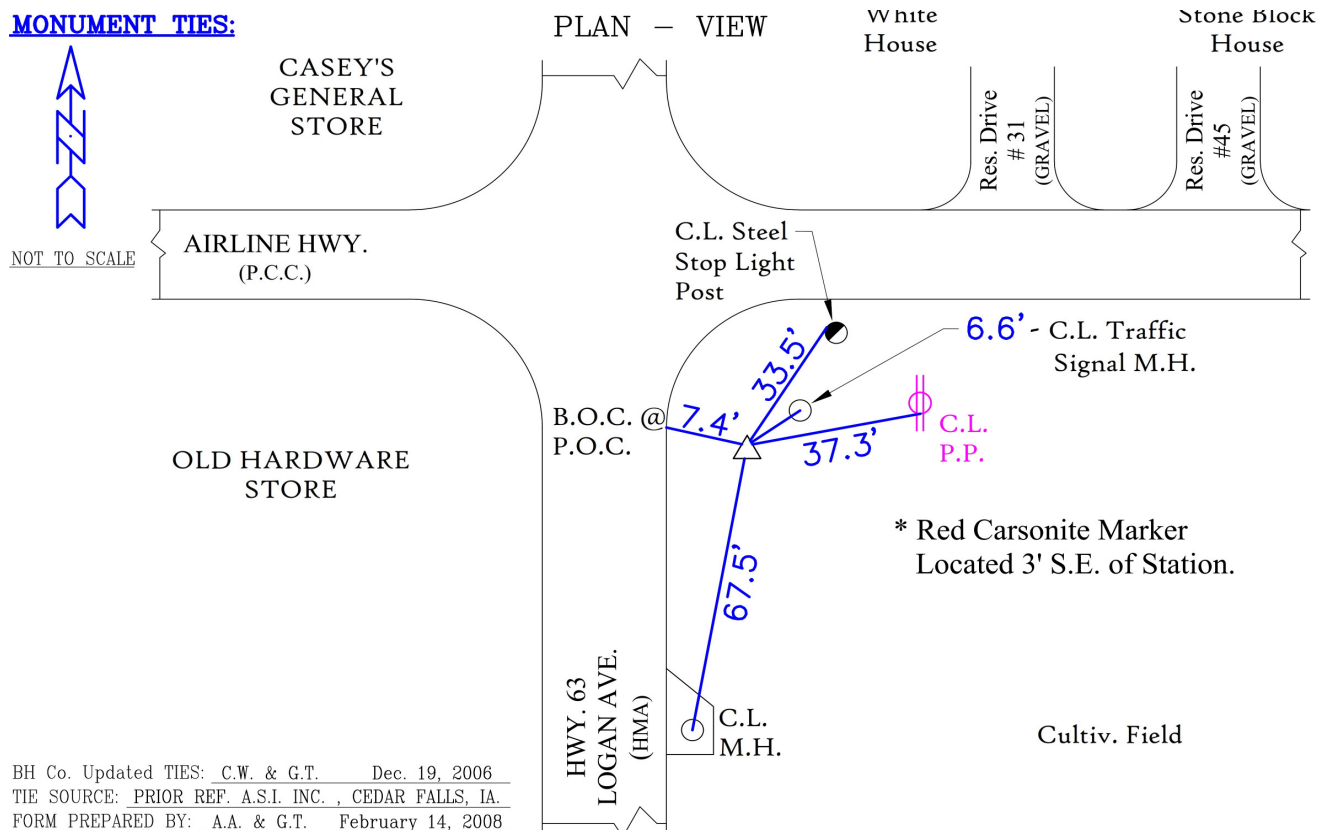
Physical Details: *Station is flush with ground surface along mowed shoulder of southeast corner of intersection.*

NAD 83(NA2011) Latitude: **N42°32'31.02155"** Longitude: **W92°20'14.52211"**
NAVD 88 Ortho Height: **910.035sft** Ellip. Ht: **807.352sft** **Geoid18(Conus)**

Horizontal Datum: NAD 83(NA2011) - Vertical Datum: NAVD 1988

Iowa North Zone (1401) Northing: **3662697.790sft** Easting: **5234554.344sft**Mapping Angle: **0°47'17"**Combination Scale Factor: **0.9999091739**

Iowa Regional Coordinate System, Zone 5, Waterloo LCC

IaRCS Zone 5 Northing: **8860632.112sft** Easting: **15476453.655sft**Mapping Angle: **-0°03'33"**Combination Scale Factor: **0.9999951775****MONUMENT TIES:**

This document was prepared by Dan Corbin, Inc. for Black Hawk County, Iowa.

7121



Facing South

