

Black Hawk County, Iowa**12/01/2020**

Units: US Survey Feet

Point ID: **7120**Stamping on Disk: **94-120**

Type of Monument: *Berntsen 5/8" fluted "Top Security" rod, 6ft long with 2.5" dia. aluminum survey cap, NGS style access cover.*

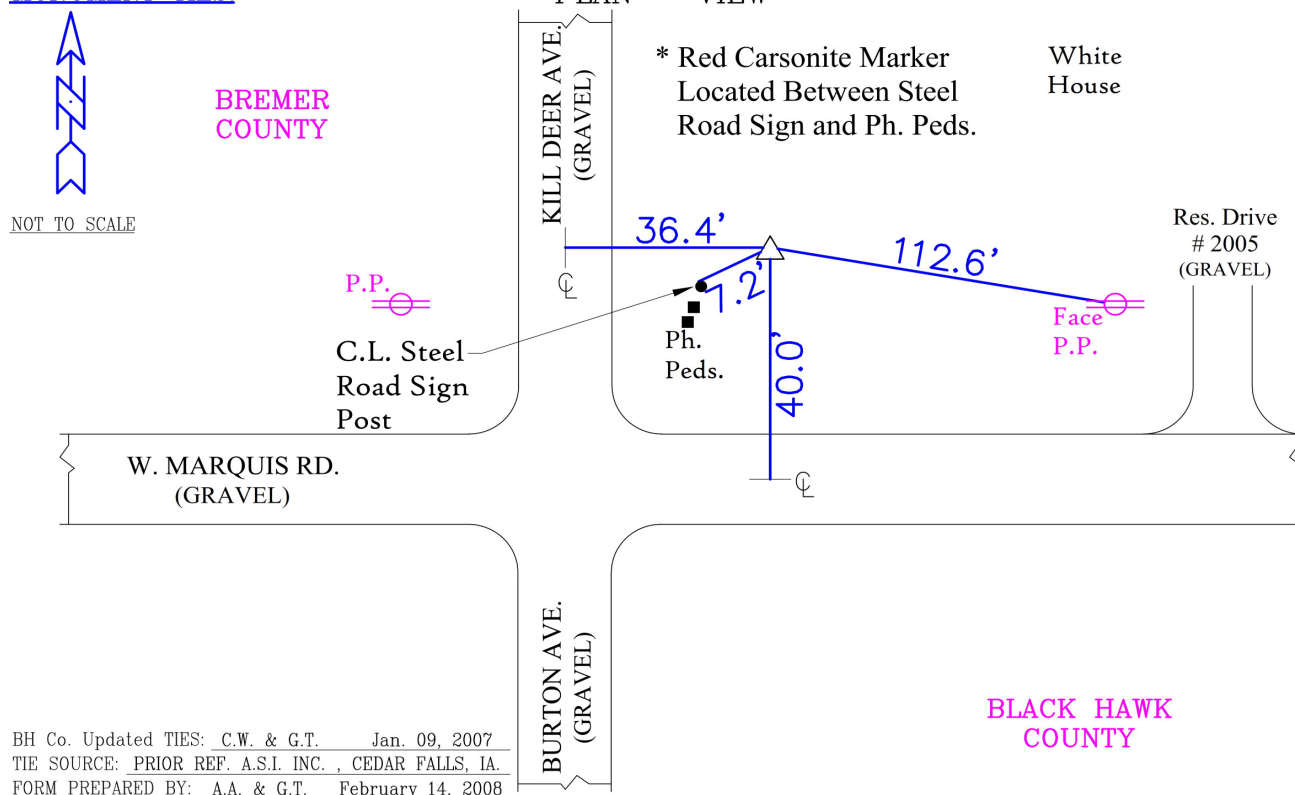
Physical Details: *Station is flush with ground surface at southwest corner of mowed lawn residence.*

NAD 83(NA2011) Latitude: **N42°38'32.72851"** Longitude: **W92°21'24.87047"**
NAVD 88 Ortho Height: **952.588sft** Ellip. Ht: **849.673sft** **Geoid18(Conus)**

Horizontal Datum: NAD 83(NA2011) - Vertical Datum: NAVD 1988

Iowa North Zone (1401) Northing: **3699238.544sft** Easting: **5228793.647sft**Mapping Angle: **0°46'29"**Combination Scale Factor: **0.9999048523**

Iowa Regional Coordinate System, Zone 5, Waterloo LCC

IaRCS Zone 5 Northing: **8897257.205sft** Easting: **15471233.399sft**Mapping Angle: **-0°04'21"**Combination Scale Factor: **0.9999913931****MONUMENT TIES:**

This document was prepared by Dan Corbin, Inc. for Black Hawk County, Iowa.

7120



Facing East

