

**Black Hawk County, Iowa**

Units: US Survey Feet

12/01/2020

Point ID: **7118**Stamping on Disk: **94-118**

Type of Monument: *Berntsen 5/8" fluted "Top Security" rod, 6ft long with 2.5" dia. aluminum survey cap, NGS style access cover.*

Physical Details: *Station is flush with ground surface at centerline of old field entrance drive.*

NAD 83(NA2011) Latitude: **N42°35'33.01384"** Longitude: **W92°21'27.03397"**  
NAVD 88 Ortho Height: **962.796sft** Ellip. Ht: **859.881sft** **Geoid18(Conus)**

Horizontal Datum: NAD 83(NA2011) - Vertical Datum: NAVD 1988

**Iowa North Zone (1401)** Northing: **3681045.276sft** Easting: **5228877.825sft**  
Mapping Angle: **0°46'28"** Combination Scale Factor: **0.9999051241**

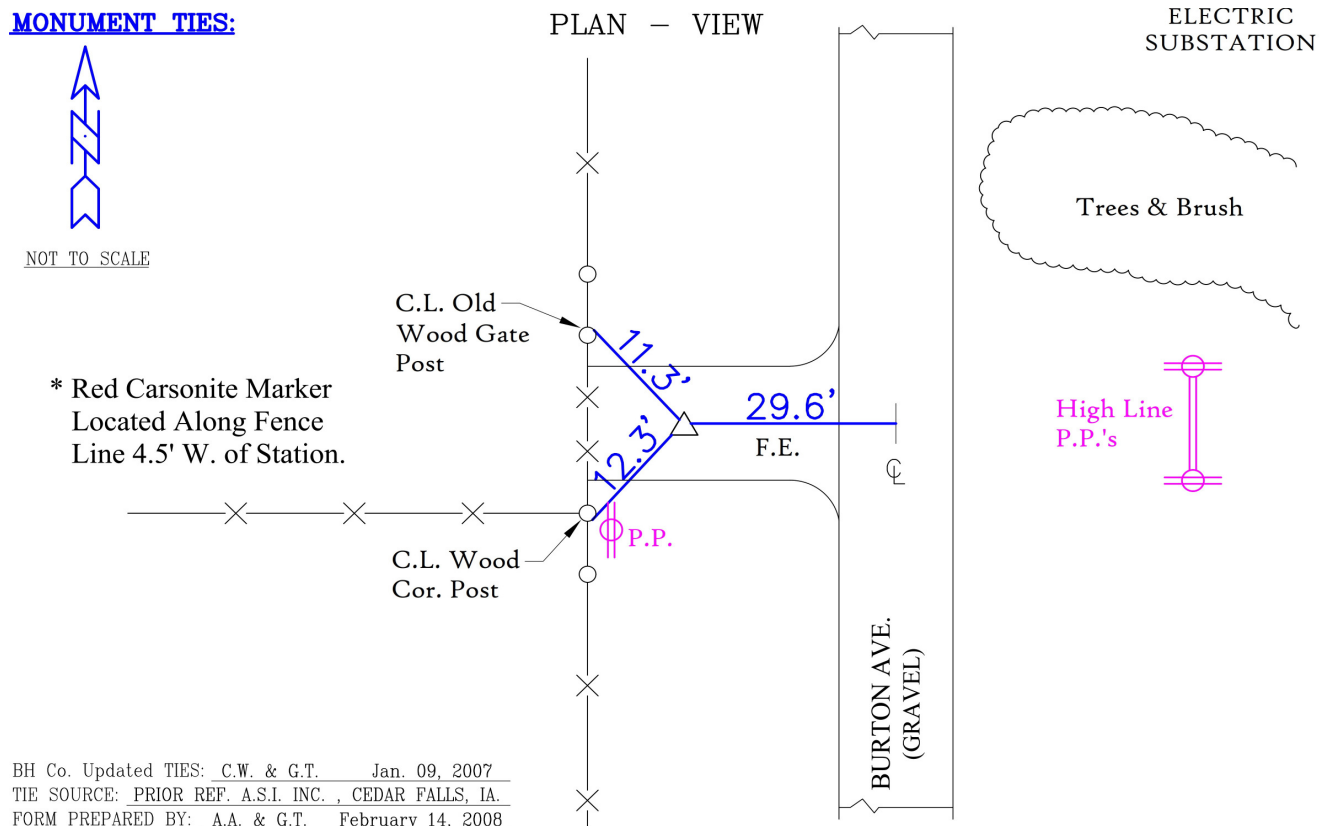
Iowa Regional Coordinate System, Zone 5, Waterloo LCC

**IaRCS Zone 5** Northing: **8879063.108sft** Easting: **15471048.562sft**  
Mapping Angle: **-0°04'22"** Combination Scale Factor: **0.9999913978**

**MONUMENT TIES:**

NOT TO SCALE

\* Red Carsonite Marker  
Located Along Fence  
Line 4.5' W. of Station.



*This document was prepared by Dan Corbin, Inc. for Black Hawk County, Iowa.*

7118



Facing Northwest

