

Black Hawk County, Iowa**12/01/2020**

Units: US Survey Feet

Point ID: **7117**Stamping on Disk: **94-117**

Type of Monument: *Berntsen 5/8" fluted "Top Security" rod, 6ft long with 2.5" dia. aluminum survey cap, NGS style access cover.*

Physical Details: *Station is flush with ground surface 3.5' west of toe of back slope in slope.*

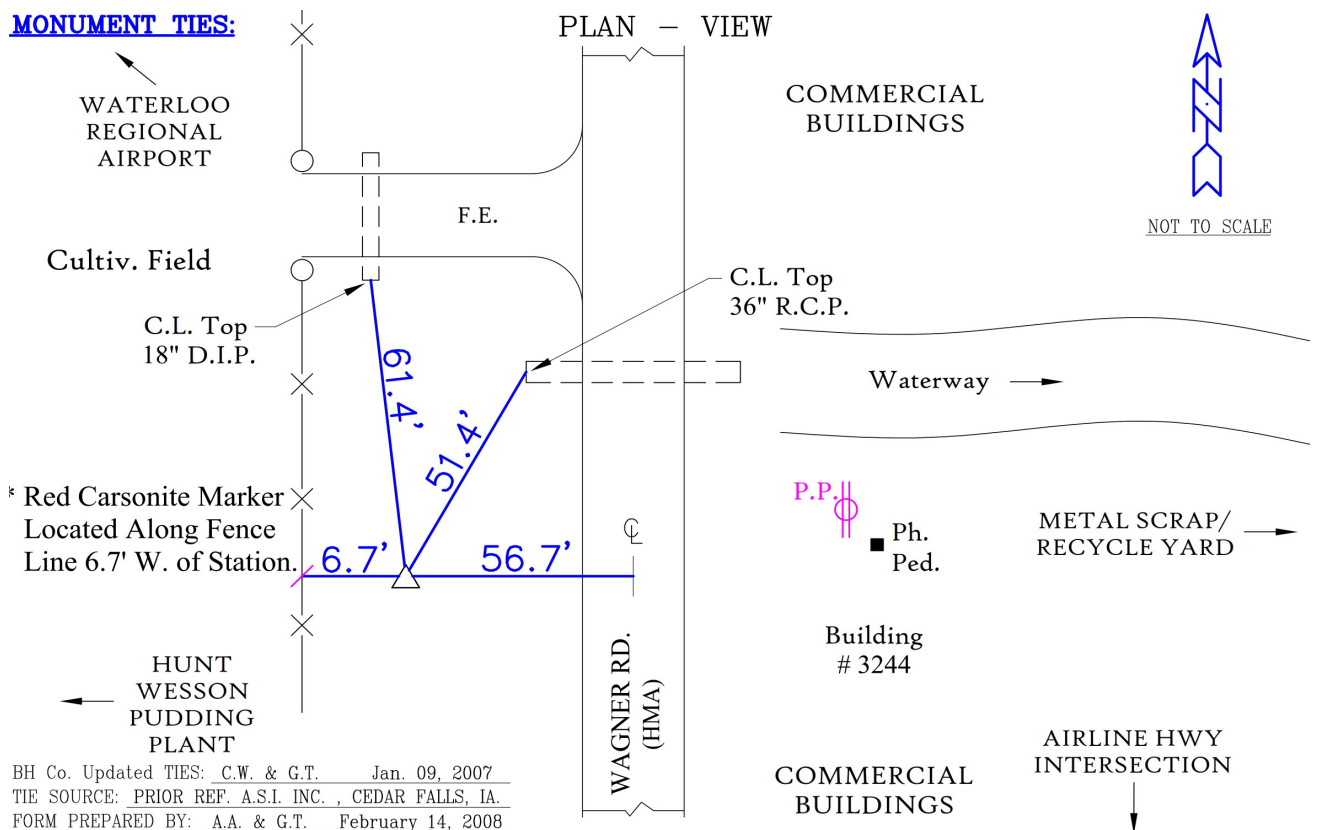
NAD 83(NA2011) Latitude: **N42°32'43.84401"** Longitude: **W92°22'37.90982"**
NAVD 88 Ortho Height: **858.956sft** Ellip. Ht: **755.943sft** **Geoid18(Conus)**

Horizontal Datum: NAD 83(NA2011) - Vertical Datum: NAVD 1988

Iowa North Zone (1401) Northing: **3663850.612sft** Easting: **5223804.446sft**
Mapping Angle: **0°45'40"** Combination Scale Factor: **0.9999114973**

Iowa Regional Coordinate System, Zone 5, Waterloo LCC

IaRCS Zone 5 Northing: **8861943.860sft** Easting: **15465721.054sft**
Mapping Angle: **-0°05'10"** Combination Scale Factor: **0.9999975202**

MONUMENT TIES:

This document was prepared by Dan Corbin, Inc. for Black Hawk County, Iowa.

7117



Facing West

