

**Black Hawk County, Iowa****12/01/2020**

Units: US Survey Feet

Point ID: **7113**Stamping on Disk: **94-113**

Type of Monument: *Berntsen 5/8" fluted "Top Security" rod, 6ft long with 2.5" dia. aluminum survey cap, NGS style access cover.*

Physical Details: *Station is flush with ground surface located in toe of fore slope.*

NAD 83(NA2011) Latitude: **N42°36'50.17288"** Longitude: **W92°25'32.87643"**  
NAVD 88 Ortho Height: **934.492sft** Ellip. Ht: **831.180sft** Geoid18(Conus)

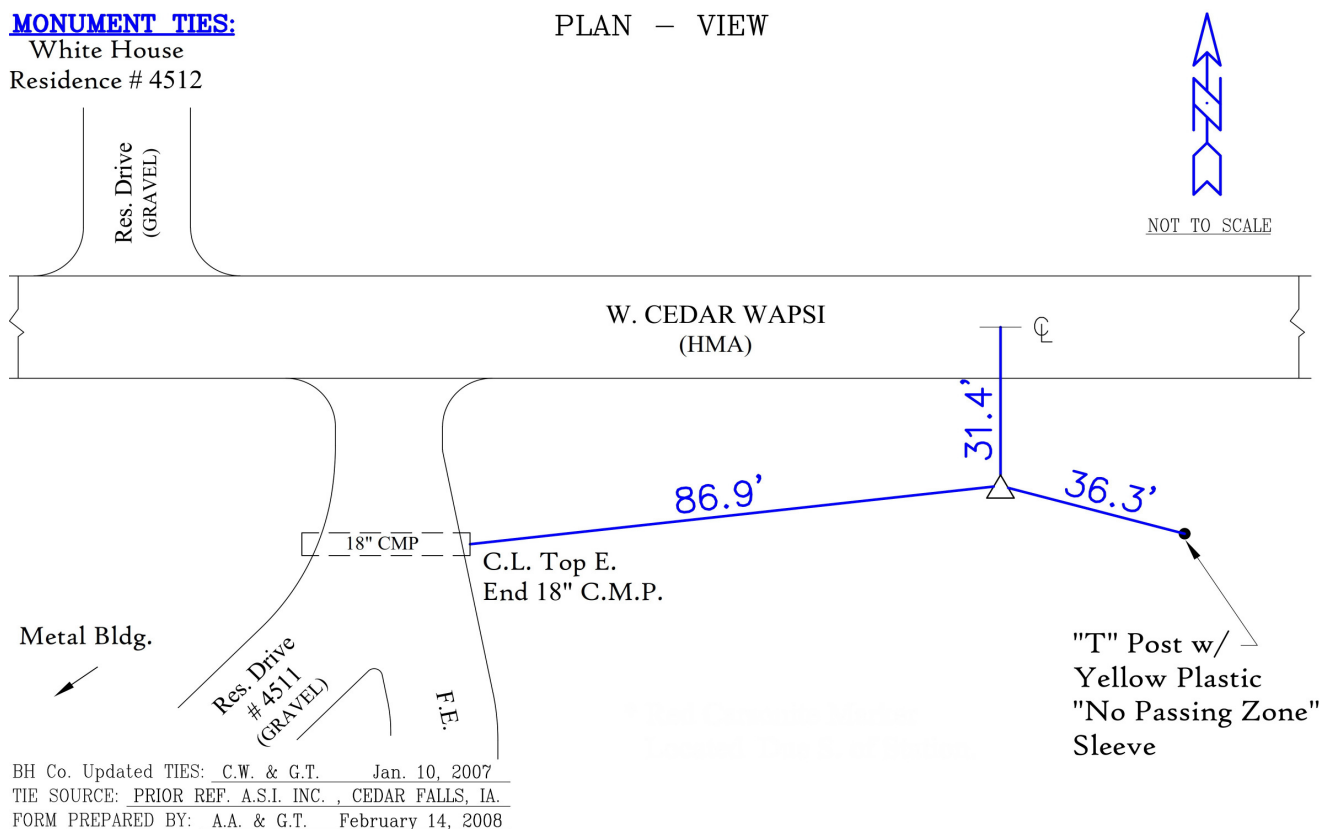
Horizontal Datum: NAD 83(NA2011) - Vertical Datum: NAVD 1988  
**Iowa North Zone (1401)** Northing: **3688614.463sft** Easting: **5210391.900sft**  
Mapping Angle: **0°43'41"** Combination Scale Factor: **0.9999060772**

Iowa Regional Coordinate System, Zone 5, Waterloo LCC

**IaRCS Zone 5** Northing: **8886905.460sft** Easting: **15452674.981sft**  
Mapping Angle: **-0°07'09"** Combination Scale Factor: **0.9999924656**

**MONUMENT TIES:**

PLAN - VIEW

White House  
Residence # 4512

*This document was prepared by Dan Corbin, Inc. for Black Hawk County, Iowa.*



7113



Facing South

