

**Black Hawk County, Iowa****12/01/2020**

Units: US Survey Feet

Point ID: **7112**Stamping on Disk: **94-112**

Type of Monument: *Berntsen 5/8" fluted "Top Security" rod, 6ft long with 2.5" dia. aluminum survey cap, NGS style access cover.*

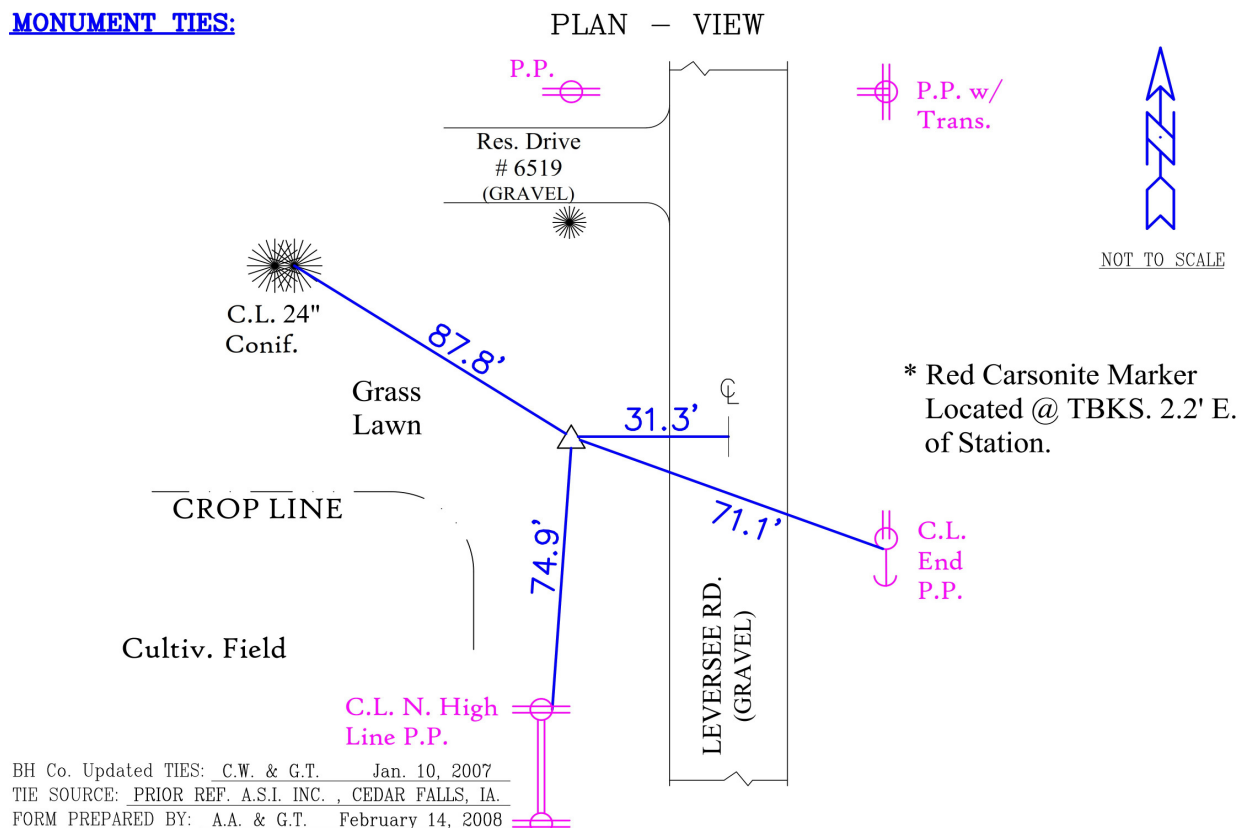
Physical Details: *Station is flush with ground surface located in top of back slope within mowed area of local residence.*

NAD 83(NA2011) Latitude: **N42°35'33.67707"** Longitude: **W92°24'59.39380"**  
NAVD 88 Ortho Height: **932.441sft** Ellip. Ht: **829.149sft** **Geoid18(Conus)**

Horizontal Datum: NAD 83(NA2011) - Vertical Datum: NAVD 1988

**Iowa North Zone (1401)** Northing: **3680903.297sft** Easting: **5212994.479sft**Mapping Angle: **0°44'04"** Combination Scale Factor: **0.9999065888**

Iowa Regional Coordinate System, Zone 5, Waterloo LCC

**IaRCS Zone 5** Northing: **8879155.989sft** Easting: **15455163.483sft**Mapping Angle: **-0°06'46"** Combination Scale Factor: **0.9999928635****MONUMENT TIES:**

*This document was prepared by Dan Corbin, Inc. for Black Hawk County, Iowa.*



7112



Facing West

