

**Black Hawk County, Iowa**

Units: US Survey Feet

12/01/2020

Point ID: **7110**Stamping on Disk: **94-110**

Type of Monument: *Berntsen 5/8" fluted "Top Security" rod, 6ft long with 2.5" dia. aluminum survey cap, NGS style access cover.*

Physical Details: *Station is flush with ground surface located 1' +/- east of edge of HMA bike trail.*

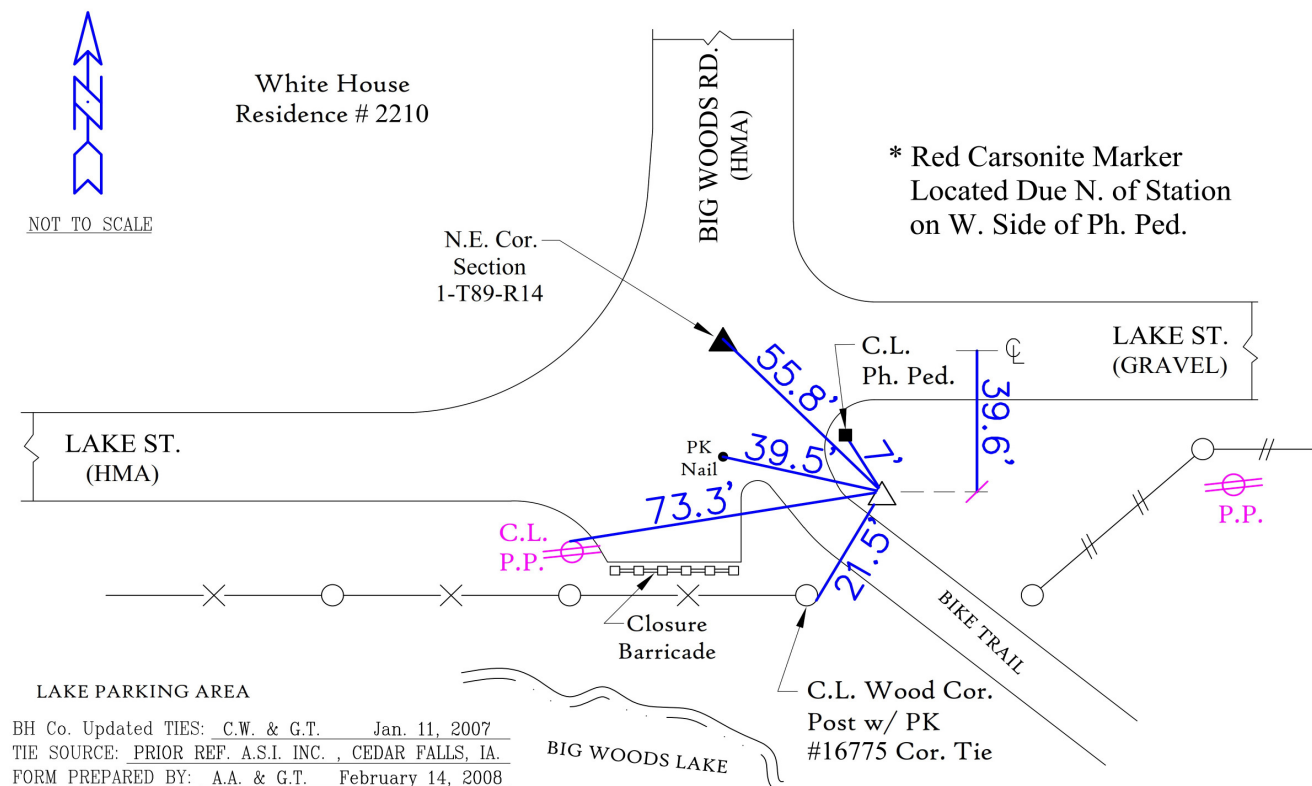
NAD 83(NA2011) Latitude: **N42°33'20.39396"** Longitude: **W92°26'10.43599"**  
NAVD 88 Ortho Height: **866.487sft** Ellip. Ht: **763.074sft** **Geoid18(Conus)**

Horizontal Datum: NAD 83(NA2011) - Vertical Datum: NAVD 1988

**Iowa North Zone (1401)** Northing: **3667344.556sft** Easting: **5207850.959sft**  
Mapping Angle: **0°43'15"** Combination Scale Factor: **0.9999107961**

Iowa Regional Coordinate System, Zone 5, Waterloo LCC

**IaRCS Zone 5** Northing: **8865673.613sft** Easting: **15449819.600sft**  
Mapping Angle: **-0°07'34"** Combination Scale Factor: **0.9999968733**

**MONUMENT TIES:****PLAN - VIEW**

*This document was prepared by Dan Corbin, Inc. for Black Hawk County, Iowa.*

7110



Facing North

