

Black Hawk County, Iowa

Units: US Survey Feet

12/01/2020

Point ID: **7109**Stamping on Disk: **94-109**

Type of Monument: *Berntsen 5/8" fluted "Top Security" rod, 6ft long with 2.5" dia. aluminum survey cap, NGS style access cover.*

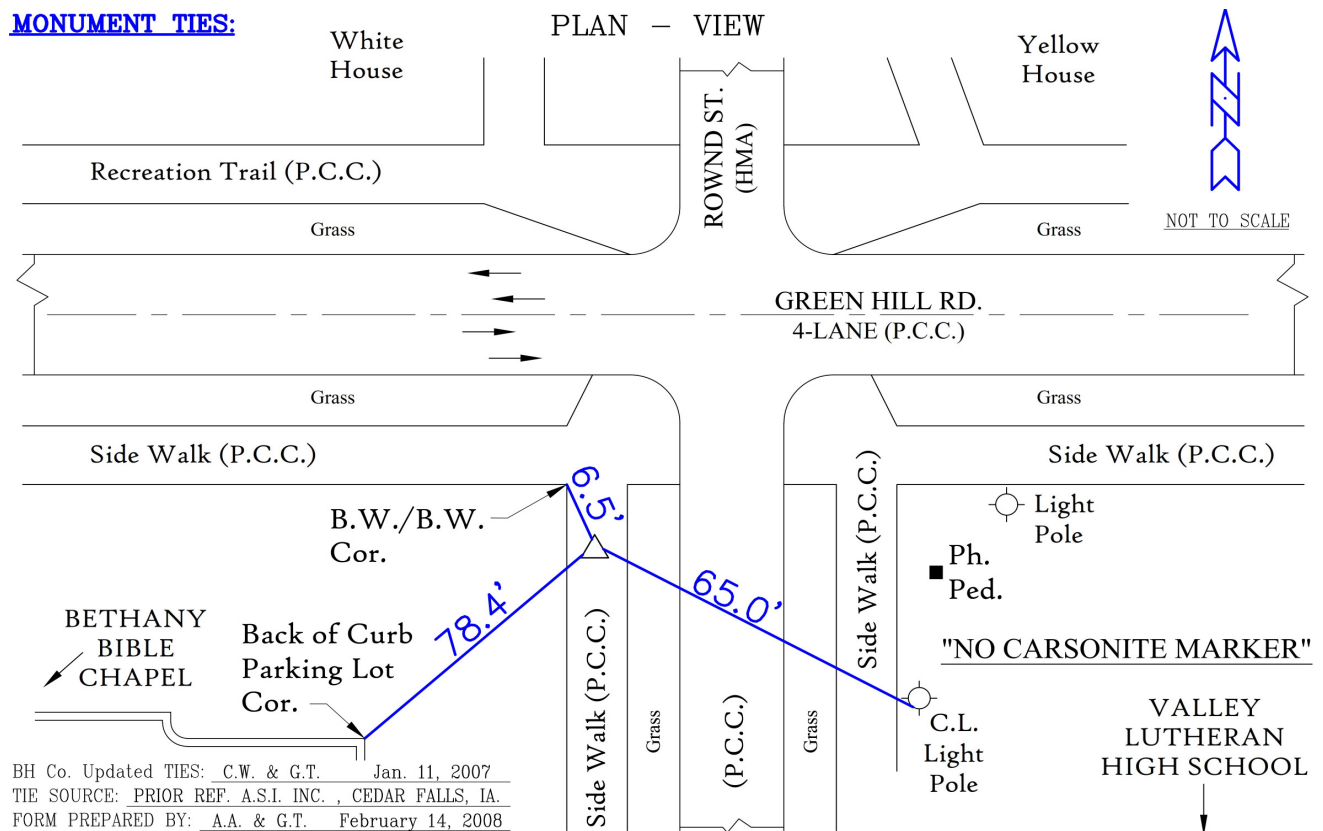
Physical Details: *Station is located in portland cement concrete side walk.*

NAD 83(NA2011) Latitude: **N42°29'52.73390"** Longitude: **W92°25'16.45599"**
NAVD 88 Ortho Height: **937.443sft** Ellip. Ht: **834.264sft** Geoid18(Conus)

Horizontal Datum: NAD 83(NA2011) - Vertical Datum: NAVD 1988
Iowa North Zone (1401) Northing: **3646376.047sft** Easting: **5212158.791sft**
Mapping Angle: **0°43'52"** Combination Scale Factor: **0.9999098556**

Iowa Regional Coordinate System, Zone 5, Waterloo LCC

IaRCS Zone 5 Northing: **8844641.899sft** Easting: **15453817.288sft**
Mapping Angle: **-0°06'58"** Combination Scale Factor: **0.9999956244**

MONUMENT TIES:

This document was prepared by Dan Corbin, Inc. for Black Hawk County, Iowa.

7109



Facing North

