

Black Hawk County, Iowa

Units: US Survey Feet

12/01/2020

Point ID: **7108**Stamping on Disk: **94-108**

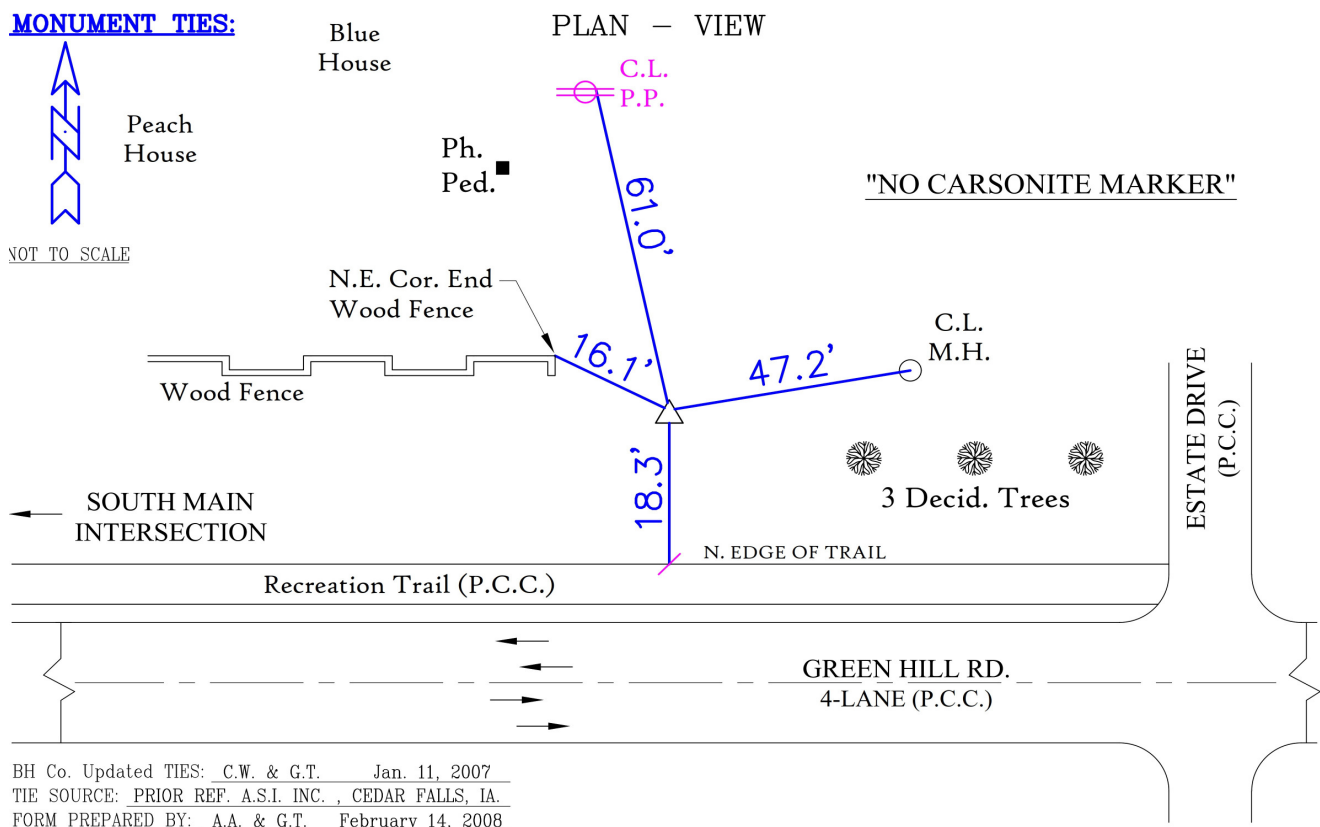
Type of Monument: *Berntsen 5/8" fluted "Top Security" rod, 6ft long with 2.5" dia. aluminum survey cap, NGS style access cover.*

Physical Details: *Station is flush with ground surface located in grass side slope.*

NAD 83(NA2011) Latitude: **N42°29'54.66728"** Longitude: **W92°26'37.30092"**
NAVD 88 Ortho Height: **949.167sft** Ellip. Ht: **845.825sft** Geoid18(Conus)

Horizontal Datum: NAD 83(NA2011) - Vertical Datum: NAVD 1988
Iowa North Zone (1401) Northing: **3646495.273sft** Easting: **5206100.726sft**
Mapping Angle: **0°42'57"** Combination Scale Factor: **0.9999092755**

Iowa Regional Coordinate System, Zone 5, Waterloo LCC
IaRCS Zone 5 Northing: **8844850.697sft** Easting: **15447761.129sft**
Mapping Angle: **-0°07'52"** Combination Scale Factor: **0.9999950471**



This document was prepared by Dan Corbin, Inc. for Black Hawk County, Iowa.

7108



Facing North

