

Black Hawk County, Iowa

Units: US Survey Feet

12/01/2020

Point ID: **7106**Stamping on Disk: **2006-106R**

Type of Monument: *Berntsen 5/8" fluted "Top Security" rod, 6ft long with 2.5" dia. aluminum survey cap, NGS style access cover.*

Physical Details: *Station is flush with ground surface in mowed grass ditch bottom. Aligned with the east face of small blue bldg on the south side of road.*

NAD 83(NA2011) Latitude: **N42°38'32.53937"** Longitude: **W92°28'14.57733"**
NAVD 88 Ortho Height: **884.326sft** Ellip. Ht: **780.861sft** **Geoid18(Conus)**

Horizontal Datum: NAD 83(NA2011) - Vertical Datum: NAVD 1988
Iowa North Zone (1401) Northing: **3698825.987sft** Easting: **5198176.091sft**
Mapping Angle: **0°41'51"** Combination Scale Factor: **0.9999081416**

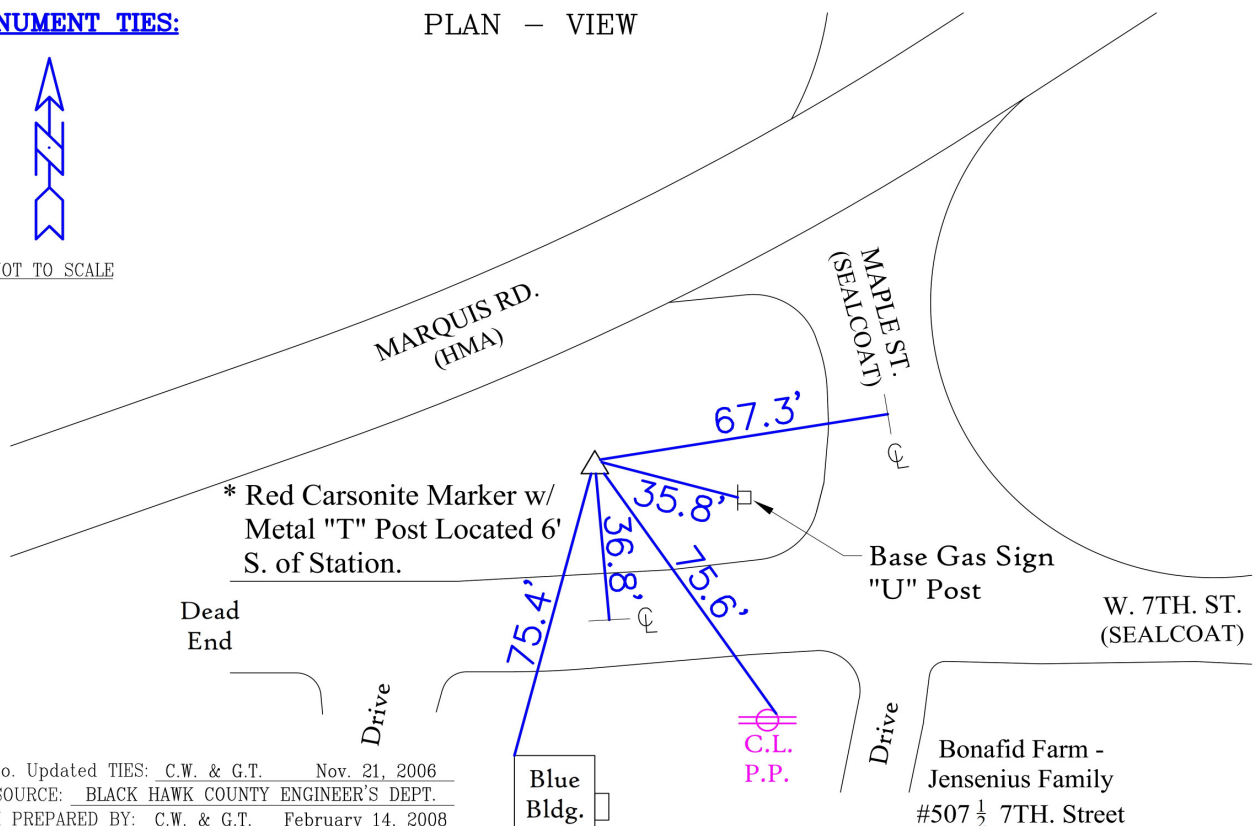
Iowa Regional Coordinate System, Zone 5, Waterloo LCC
IaRCS Zone 5 Northing: **8897297.374sft** Easting: **15440610.439sft**
Mapping Angle: **-0°08'58"** Combination Scale Factor: **0.9999946824**

MONUMENT TIES:

PLAN - VIEW



NOT TO SCALE



BH Co. Updated TIES: C.W. & G.T. Nov. 21, 2006
TIE SOURCE: BLACK HAWK COUNTY ENGINEER'S DEPT.
FORM PREPARED BY: C.W. & G.T. February 14, 2008

This document was prepared by Dan Corbin, Inc. for Black Hawk County, Iowa.

7106



Facing South

