

Black Hawk County, Iowa

Units: US Survey Feet

12/01/2020

Point ID: **7105**Stamping on Disk: **94-105**

Type of Monument: *Berntsen 5/8" fluted "Top Security" rod, 6ft long with 2.5" dia. aluminum survey cap, NGS style access cover.*

Physical Details: *Station is flush with ground surface and located between top of back slope and north R.O.W. fence.*

NAD 83(NA2011) Latitude: **N42°38'32.83126"** Longitude: **W92°29'39.54205"**
NAVD 88 Ortho Height: **880.298sft** Ellip. Ht: **776.726sft** **Geoid18(Conus)**

Horizontal Datum: NAD 83(NA2011) - Vertical Datum: NAVD 1988

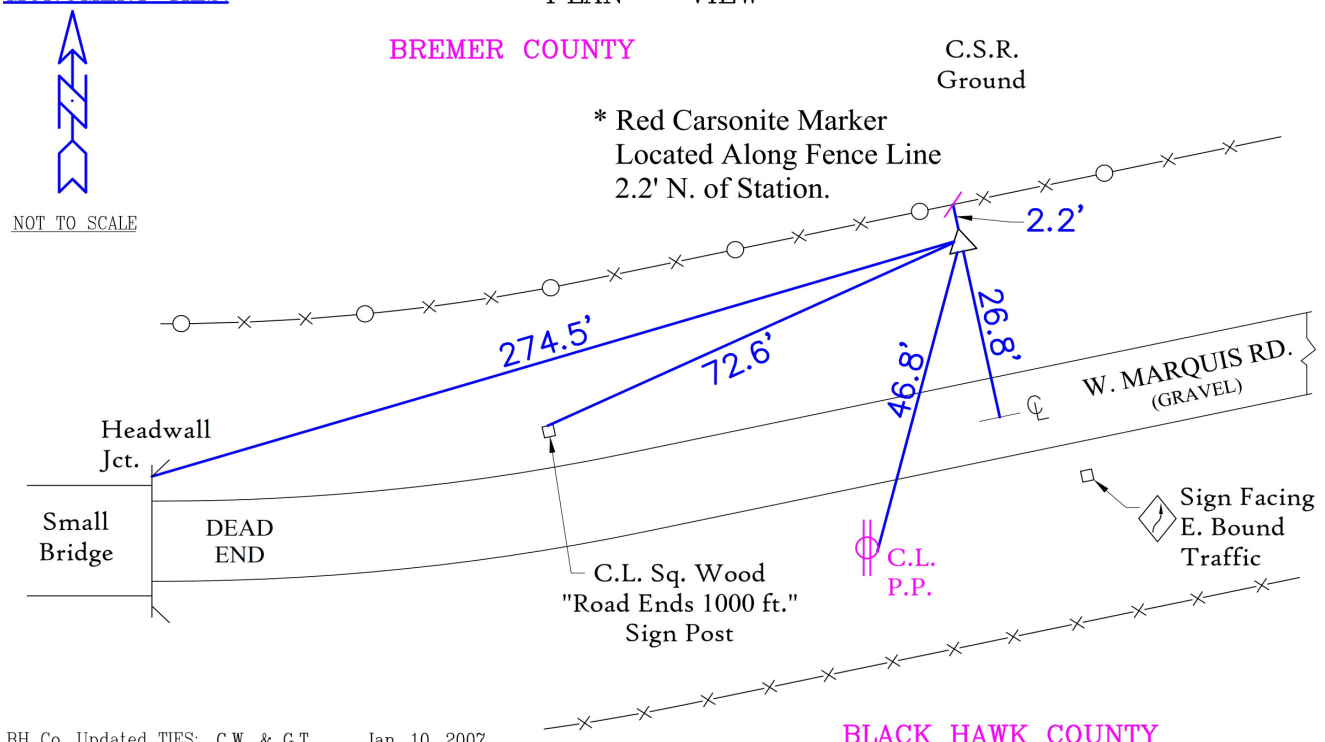
Iowa North Zone (1401) Northing: **3698779.109sft** Easting: **5191826.173sft**
Mapping Angle: **0°40'54"** Combination Scale Factor: **0.9999083386**

Iowa Regional Coordinate System, Zone 5, Waterloo LCC

IaRCS Zone 5 Northing: **8897344.386sft** Easting: **15434259.973sft**
Mapping Angle: **-0°09'56"** Combination Scale Factor: **0.9999948799**

MONUMENT TIES:

PLAN - VIEW



BH Co. Updated TIES: C.W. & G.T. Jan. 10, 2007
TIE SOURCE: PRIOR REF. A.S.I. INC., CEDAR FALLS, IA.
FORM PREPARED BY: A.A. & G.T. February 14, 2008

This document was prepared by Dan Corbin, Inc. for Black Hawk County, Iowa.

7105



Facing North

