

Black Hawk County, Iowa

Units: US Survey Feet

12/01/2020

Point ID: **7103**Stamping on Disk: **94-103**

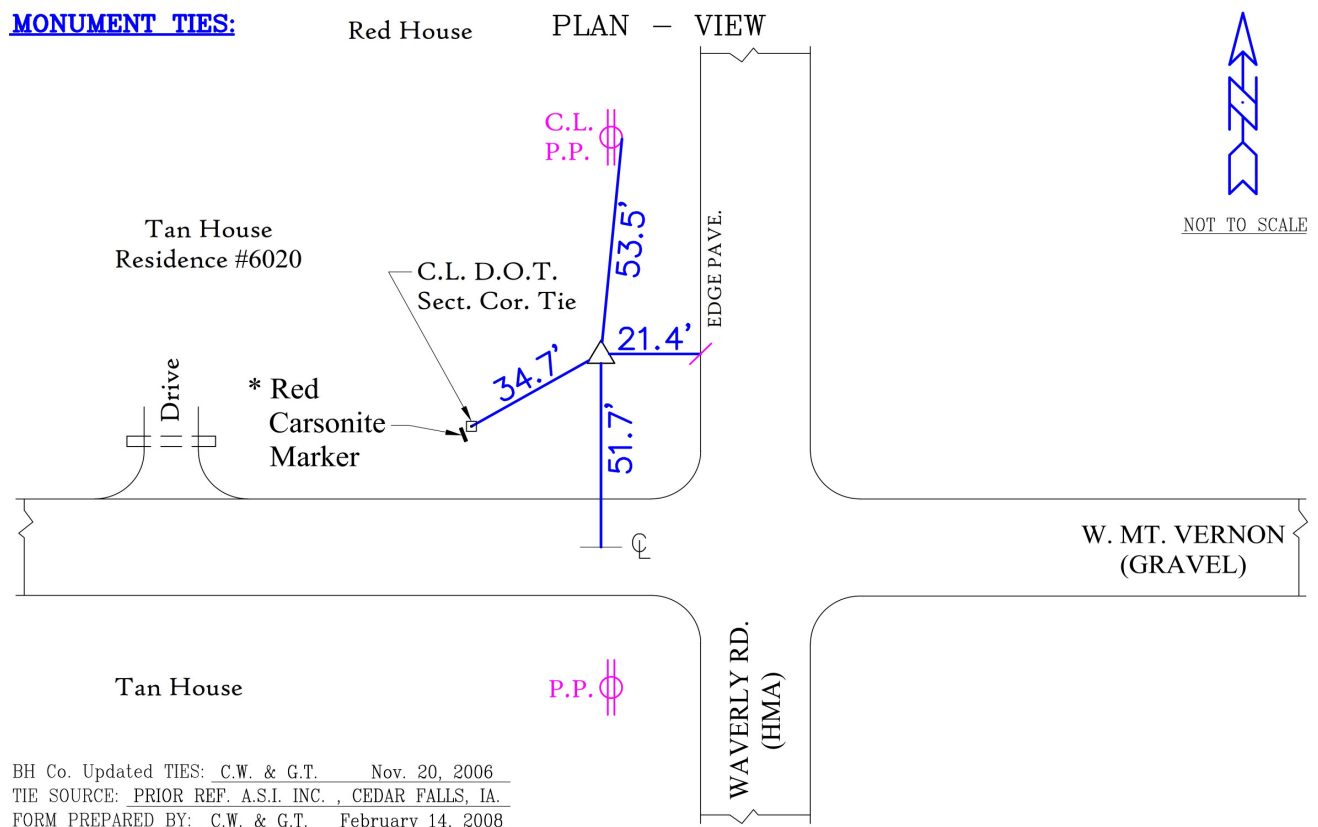
Type of Monument: *Berntsen 5/8" fluted "Top Security" rod, 6ft long with 2.5" dia. aluminum survey cap, NGS style access cover.*

Physical Details: *Station is flush with ground surface in mowed lawn.*

NAD 83(NA2011) Latitude: **N42°35'05.60757"** Longitude: **W92°27'20.97372"**
NAVD 88 Ortho Height: **874.428sft** Ellip. Ht: **770.923sft** **Geoid18(Conus)**

Horizontal Datum: NAD 83(NA2011) - Vertical Datum: NAVD 1988
Iowa North Zone (1401) Northing: **3677928.758sft** Easting: **5202440.703sft**
Mapping Angle: **0°42'28"** Combination Scale Factor: **0.9999095582**

Iowa Regional Coordinate System, Zone 5, Waterloo LCC
IaRCS Zone 5 Northing: **8876337.567sft** Easting: **15444565.968sft**
Mapping Angle: **-0°08'22"** Combination Scale Factor: **0.9999957915**

MONUMENT TIES:

This document was prepared by Dan Corbin, Inc. for Black Hawk County, Iowa.

7103



Facing West

