

**Black Hawk County, Iowa**

Units: US Survey Feet

12/01/2020

Point ID: **7101**Stamping on Disk: **94-101**

Type of Monument: *Berntsen 5/8" fluted "Top Security" rod, 6ft long with 2.5" dia. aluminum survey cap, NGS style access cover.*

Physical Details: *Station is flush with ground surface between two drives.*

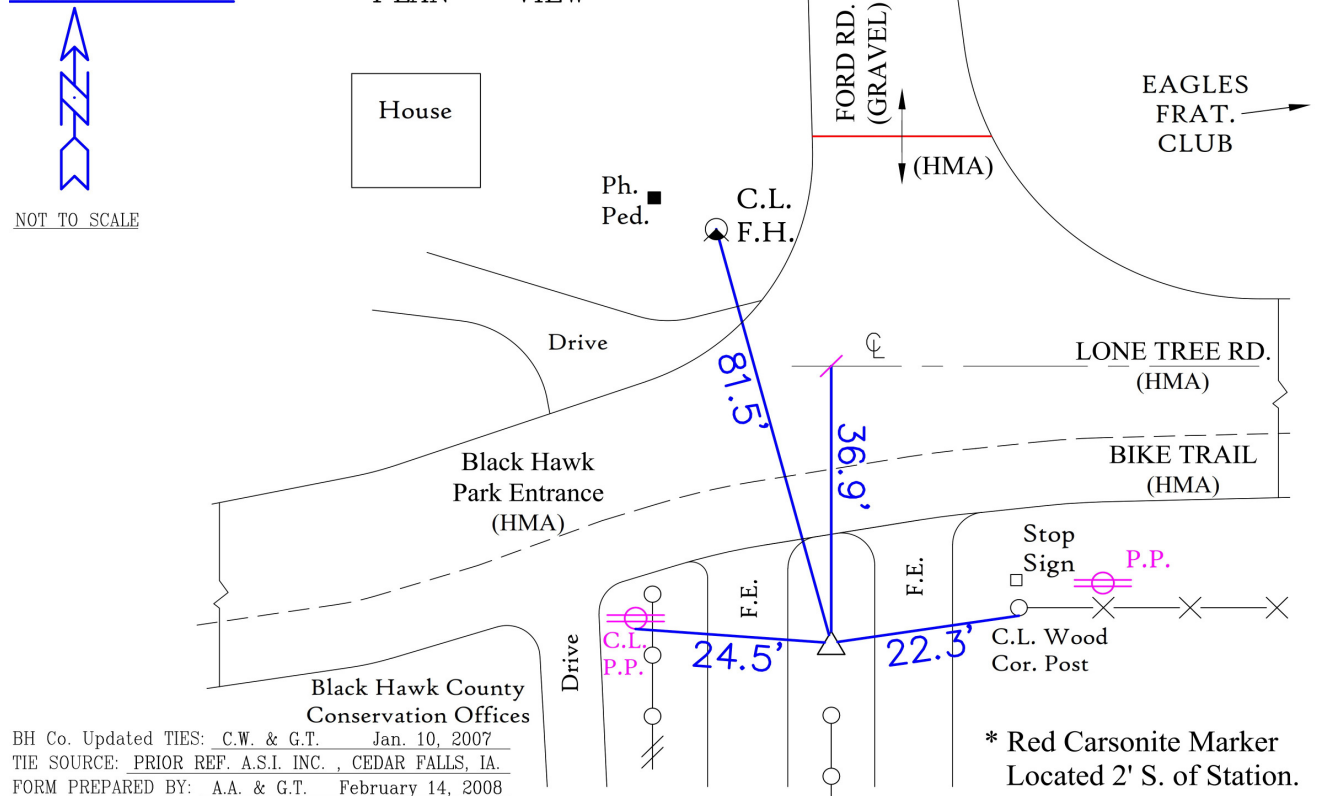
NAD 83(NA2011) Latitude: **N42°33'46.42766"** Longitude: **W92°28'26.08891"**  
NAVD 88 Ortho Height: **868.704sft** Ellip. Ht: **765.108sft** Geoid18(Conus)

Horizontal Datum: NAD 83(NA2011) - Vertical Datum: NAVD 1988

**Iowa North Zone (1401)** Northing: **3669854.278sft** Easting: **5197667.344sft**  
Mapping Angle: **0°41'44"** Combination Scale Factor: **0.9999104613**

Iowa Regional Coordinate System, Zone 5, Waterloo LCC

**IaRCS Zone 5** Northing: **8868333.853sft** Easting: **15439673.330sft**  
Mapping Angle: **-0°09'06"** Combination Scale Factor: **0.9999965771**

**MONUMENT TIES:**

*This document was prepared by Dan Corbin, Inc. for Black Hawk County, Iowa.*

7101



Facing South

