

**Black Hawk County, Iowa**

Units: US Survey Feet

12/01/2020

Point ID: **7100**Stamping on Disk: **94-100**

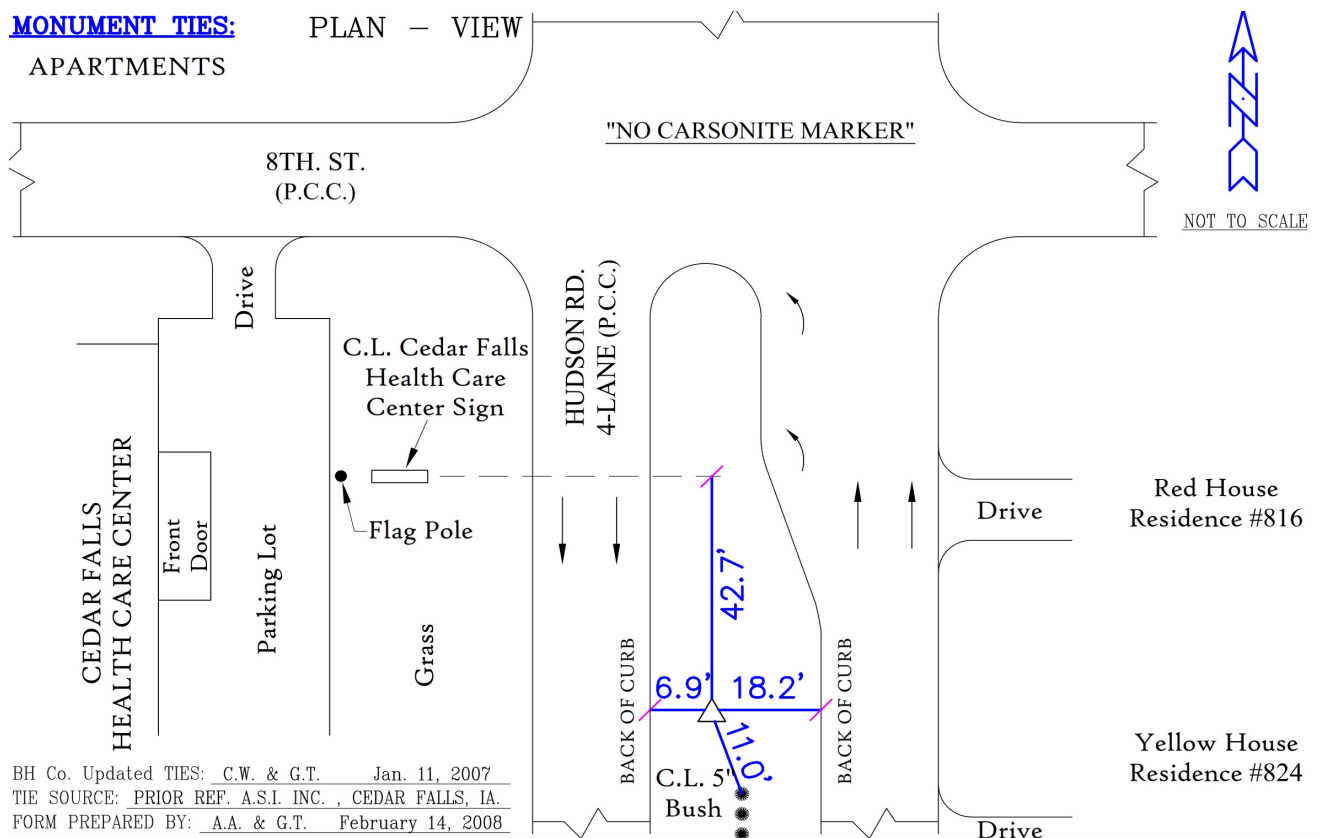
Type of Monument: *Berntsen 5/8" fluted "Top Security" rod, 6ft long with 2.5" dia. aluminum survey cap, NGS style access cover.*

Physical Details: *Station is flush with ground surface in mowed grass median.*

NAD 83(NA2011) Latitude: **N42°31'50.44812"** Longitude: **W92°27'56.24297"**  
NAVD 88 Ortho Height: **966.750sft** Ellip. Ht: **863.220sft** Geoid18(Conus)

Horizontal Datum: NAD 83(NA2011) - Vertical Datum: NAVD 1988  
**Iowa North Zone (1401)** Northing: **3658141.743sft** Easting: **5200044.269sft**  
Mapping Angle: **0°42'04"** Combination Scale Factor: **0.9999069523**

Iowa Regional Coordinate System, Zone 5, Waterloo LCC  
**IaRCS Zone 5** Northing: **8856586.445sft** Easting: **15441877.019sft**  
Mapping Angle: **-0°08'46"** Combination Scale Factor: **0.9999928955**



*This document was prepared by Dan Corbin, Inc. for Black Hawk County, Iowa.*

7100



Facing South

