

Units: US Survey Feet

12/01/2020

Point ID: 7095

Stamping on Disk: 94-095

Type of Monument: *Berntsen 5/8" fluted "Top Security" rod, 6ft long with 2.5" dia. aluminum survey cap, NGS style access cover.*

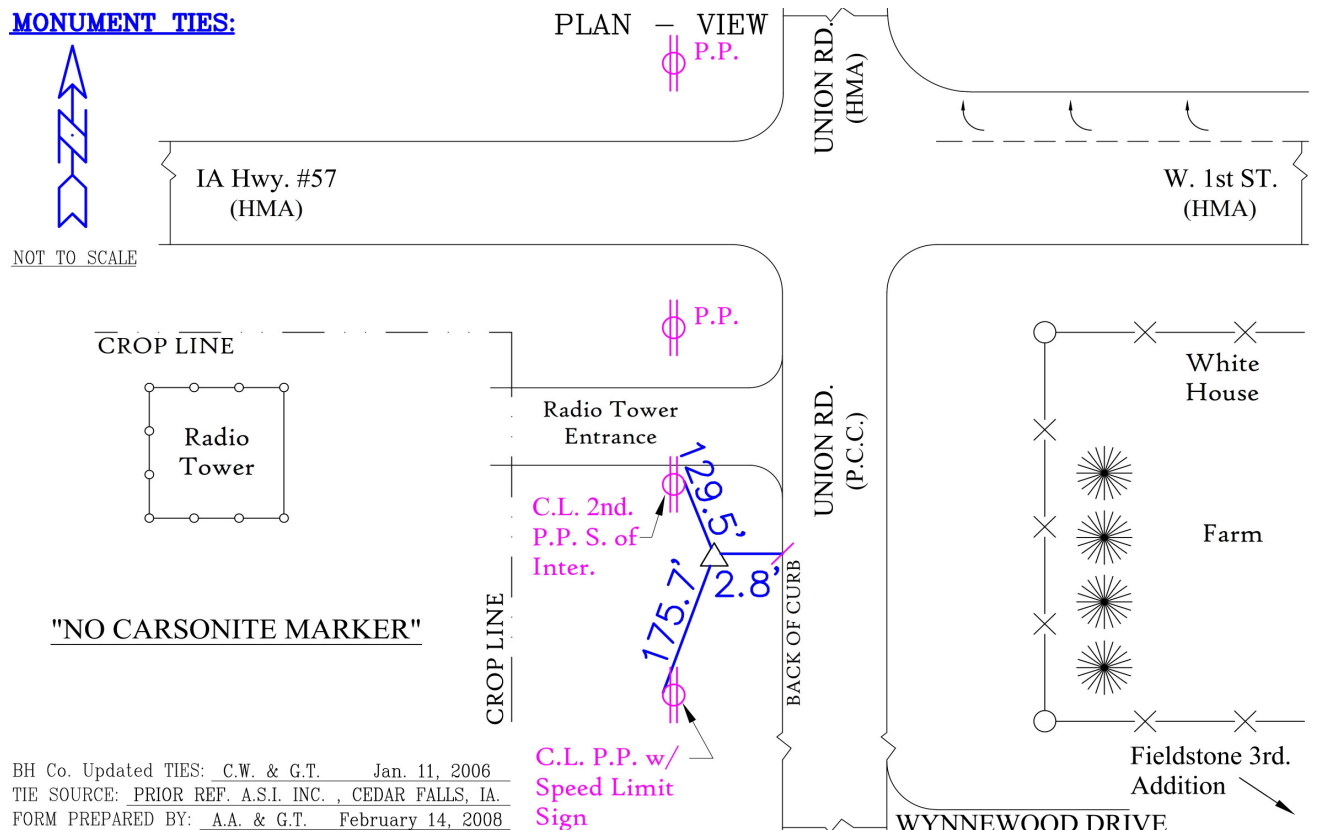
Physical Details: *Station is flush with ground surface in grass shoulder, 14.3' east of toe of back slope.*

NAD 83(NA2011) Latitude: **N42°32'28.33652"** Longitude: **W92°29'42.51245"**
NAVD 88 Ortho Height: **970.971sft** Ellip. Ht: **867.297sft** **Geoid18(Conus)**

Horizontal Datum: NAD 83(NA2011) - Vertical Datum: NAVD 1988
Iowa North Zone (1401) Northing: **3661880.956**sft Easting: **5192042.763**sft
 Mapping Angle: **0°40'52"** Combination Scale Factor: **0.9999063373**

Iowa Regional Coordinate System, Zone 5, Waterloo LCC

laRCS Zone 5 Northing: **8860443.880**sft Easting: **15433930.987**sft
Mapping Angle: **-0°09'58"** Combination Scale Factor: **0.9999923367**



This document was prepared by Dan Corbin, Inc. for Black Hawk County, Iowa.

7095



Facing West

