

Black Hawk County, Iowa

Units: US Survey Feet

12/01/2020

Point ID: **7093**Stamping on Disk: **94-093**

Type of Monument: *Berntsen 5/8" fluted "Top Security" rod, 6ft long with 2.5" dia. aluminum survey cap, NGS style access cover.*

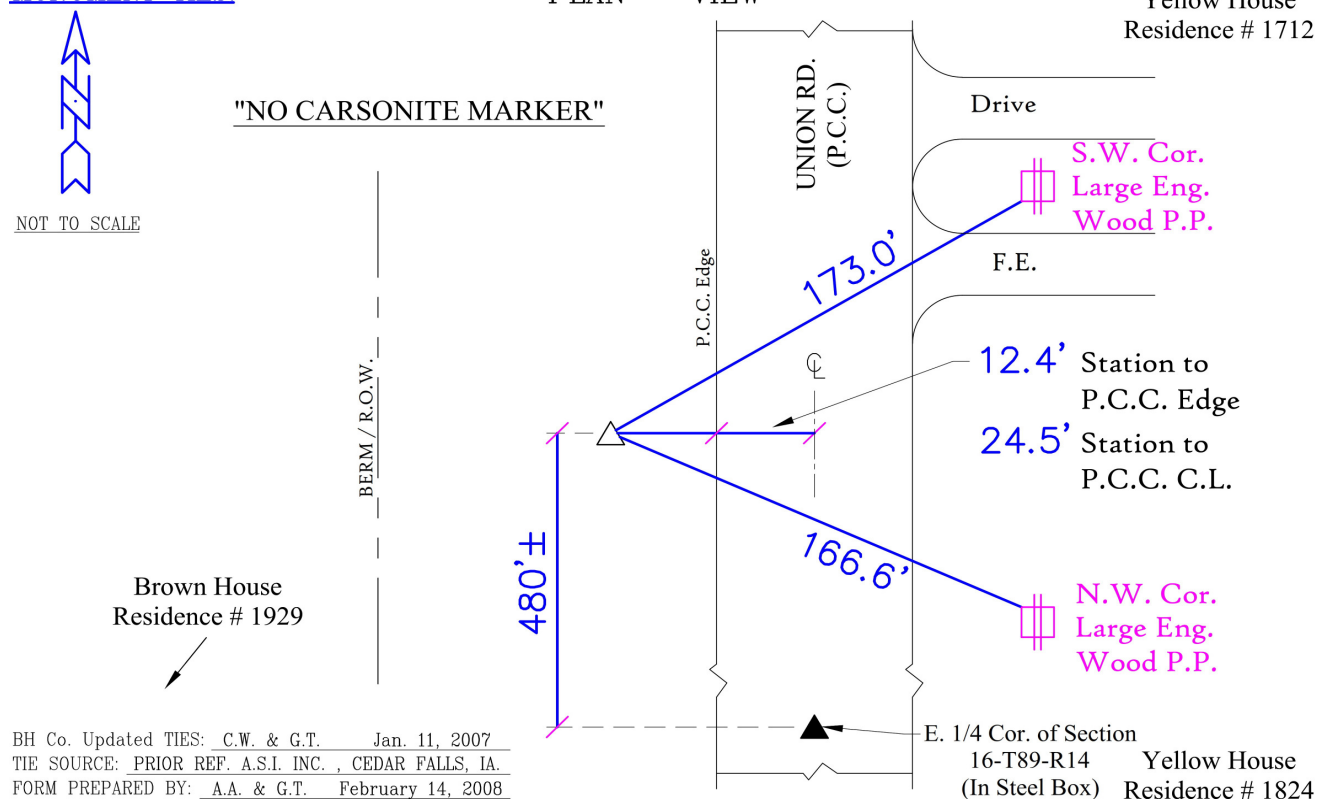
Physical Details: *Station is flush with ground surface on the edge of the west shoulder of South Union Road.*

NAD 83(NA2011) Latitude: **N42°31'17.97846"** Longitude: **W92°29'42.34491"**
NAVD 88 Ortho Height: **975.616sft** Ellip. Ht: **871.952sft** **Geoid18(Conus)**

Horizontal Datum: NAD 83(NA2011) - Vertical Datum: NAVD 1988

Iowa North Zone (1401) Northing: **3654759.263sft** Easting: **5192139.964sft**Mapping Angle: **0°40'52"**Combination Scale Factor: **0.9999069217**

Iowa Regional Coordinate System, Zone 5, Waterloo LCC

IaRCS Zone 5 Northing: **8853320.917sft** Easting: **15433922.886sft**Mapping Angle: **-0°09'58"**Combination Scale Factor: **0.9999928167****MONUMENT TIES:**

This document was prepared by Dan Corbin, Inc. for Black Hawk County, Iowa.

7093



Facing West

