

Black Hawk County, Iowa**12/01/2020**

Units: US Survey Feet

Point ID: **7092**Stamping on Disk: **94-092**

Type of Monument: *Berntsen 5/8" fluted "Top Security" rod, 6ft long with 2.5" dia. aluminum survey cap, NGS style access cover.*

Physical Details: *Station is flush with ground surface in the southwest corner of a field entrance in Bremer County.*

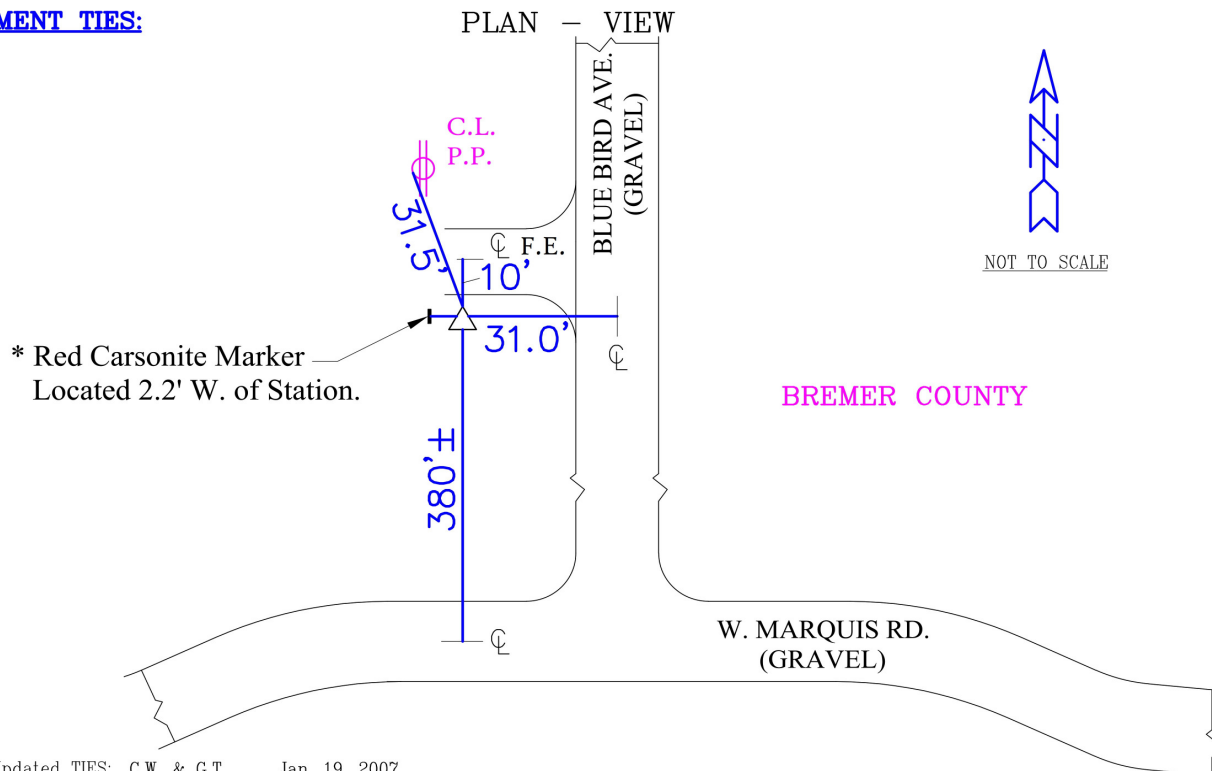
NAD 83(NA2011) Latitude: **N42°38'48.50148"** Longitude: **W92°30'52.57306"**
NAVD 88 Ortho Height: **883.131sft** Ellip. Ht: **779.474sft** **Geoid18(Conus)**

Horizontal Datum: NAD 83(NA2011) - Vertical Datum: NAVD 1988

Iowa North Zone (1401) Northing: **3700301.050sft** Easting: **5186349.935sft**
Mapping Angle: **0°40'04"** Combination Scale Factor: **0.9999081769**

Iowa Regional Coordinate System, Zone 5, Waterloo LCC

IaRCS Zone 5 Northing: **8898947.264sft** Easting: **15428806.363sft**
Mapping Angle: **-0°10'45"** Combination Scale Factor: **0.9999947415**

MONUMENT TIES:

BH Co. Updated TIES: C.W. & G.T. Jan. 19, 2007
TIE SOURCE: PRIOR REF. A.S.I. INC., CEDAR FALLS, IA.
FORM PREPARED BY: A.A. & G.T. February 14, 2008

This document was prepared by Dan Corbin, Inc. for Black Hawk County, Iowa.

7092



Facing West

