

Black Hawk County, Iowa

Units: US Survey Feet

12/01/2020

Point ID: **7090**Stamping on Disk: **94-090**

Type of Monument: *Berntsen 5/8" fluted "Top Security" rod, 6ft long with 2.5" dia. aluminum survey cap, NGS style access cover.*

Physical Details: *Station is flush with ground surface located in southeast corner of field entrance, about 2.7' north of fence line.*

NAD 83(NA2011) Latitude: **N42°33'20.54271"** Longitude: **W92°30'44.12649"**
NAVD 88 Ortho Height: **939.550sft** Ellip. Ht: **835.802sft** **Geoid18(Conus)**

Horizontal Datum: NAD 83(NA2011) - Vertical Datum: NAVD 1988

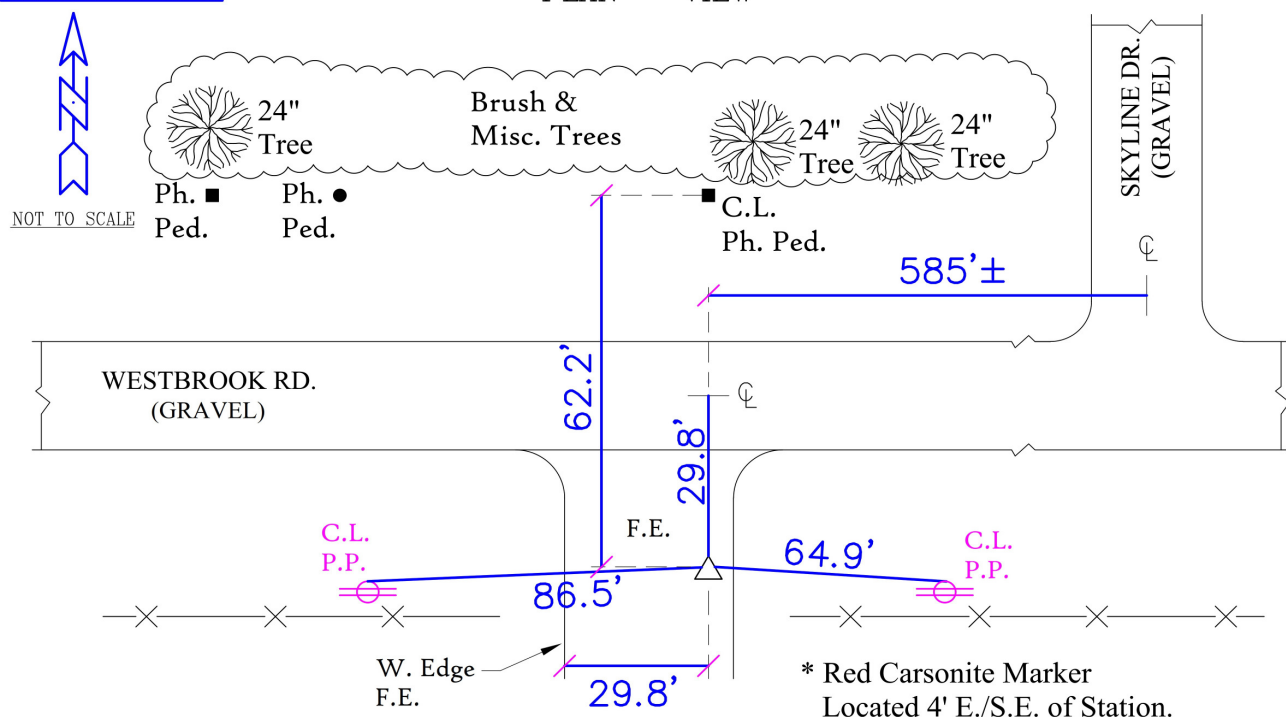
Iowa North Zone (1401) Northing: **3667111.084sft** Easting: **5187369.012sft**
Mapping Angle: **0°40'10"** Combination Scale Factor: **0.9999073186**

Iowa Regional Coordinate System, Zone 5, Waterloo LCC

IaRCS Zone 5 Northing: **8865742.992sft** Easting: **15429334.677sft**
Mapping Angle: **-0°10'40"** Combination Scale Factor: **0.9999933956**

MONUMENT TIES:

PLAN - VIEW



BH Co. Updated TIES: C.W. & G.T. Jan. 19, 2007
TIE SOURCE: PRIOR REF. A.S.I. INC., CEDAR FALLS, IA.
FORM PREPARED BY: A.A. & G.T. February 14, 2008

This document was prepared by Dan Corbin, Inc. for Black Hawk County, Iowa.

7090



Facing South

