

Black Hawk County, Iowa

Units: US Survey Feet

12/01/2020

Point ID: **7089**Stamping on Disk: **94-089**

Type of Monument: *Berntsen 5/8" fluted "Top Security" rod, 6ft long with 2.5" dia. aluminum survey cap, NGS style access cover.*

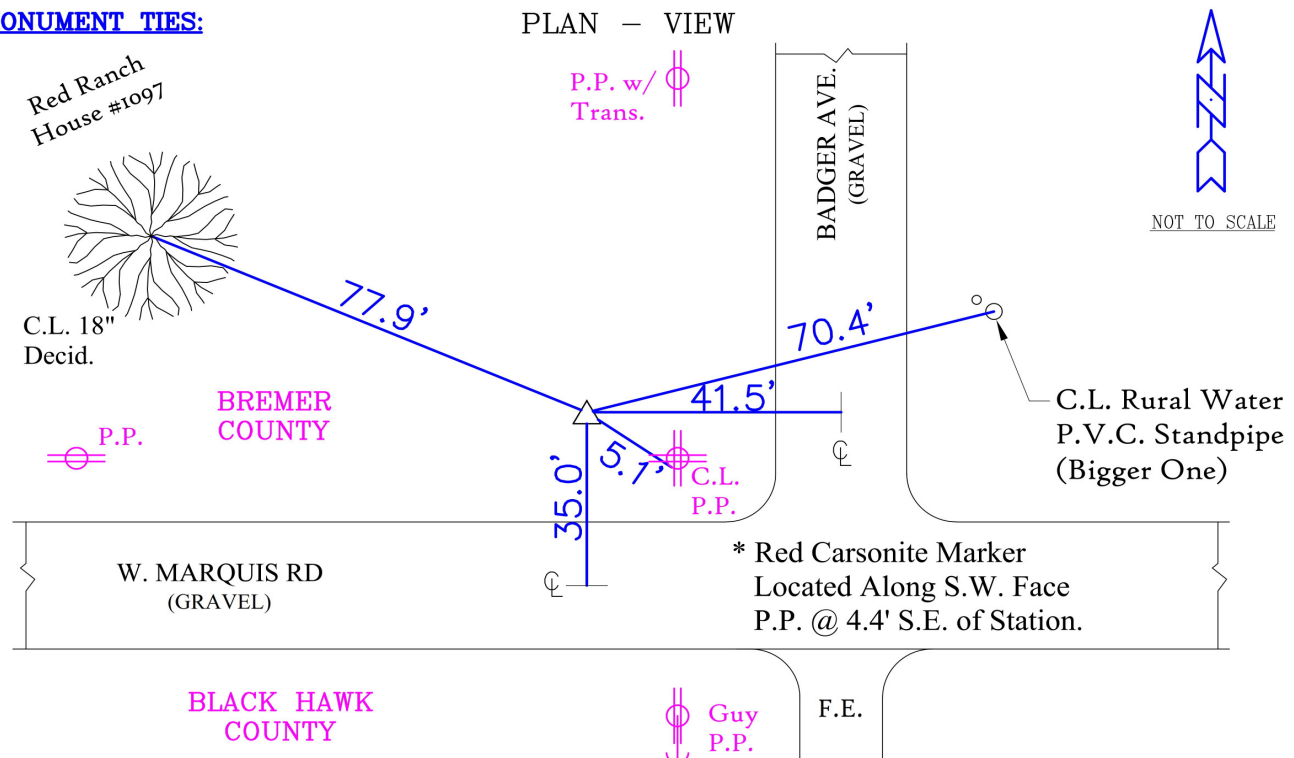
Physical Details: *Station is flush with ground surface at southeast corner of mowed yard.*

NAD 83(NA2011) Latitude: **N42°38'32.47067"** Longitude: **W92°32'03.39579"**
NAVD 88 Ortho Height: **901.666sft** Ellip. Ht: **797.912sft** Geoid18(Conus)

Horizontal Datum: NAD 83(NA2011) - Vertical Datum: NAVD 1988

Iowa North Zone (1401) Northing: **3698617.254sft** Easting: **5181076.109sft**Mapping Angle: **0°39'16"** Combination Scale Factor: **0.9999073268**

Iowa Regional Coordinate System, Zone 5, Waterloo LCC

IaRCS Zone 5 Northing: **8897341.483sft** Easting: **15423507.760sft**Mapping Angle: **-0°11'33"** Combination Scale Factor: **0.9999938674****MONUMENT TIES:****PLAN - VIEW**

BH Co. Updated TIES: C.W. & G.T. Jan. 19, 2007
TIE SOURCE: PRIOR REF. A.S.I. INC., CEDAR FALLS, IA.
FORM PREPARED BY: A.A. & G.T. February 14, 2008

This document was prepared by Dan Corbin, Inc. for Black Hawk County, Iowa.

7089



Facing East

