

**Black Hawk County, Iowa****12/01/2020**

Units: US Survey Feet

Point ID: **7088**Stamping on Disk: **94-088**

Type of Monument: *Berntsen 5/8" fluted "Top Security" rod, 6ft long with 2.5" dia. aluminum survey cap, NGS style access cover.*

Physical Details: *Station is flush with ground surface 4.5' south of toe of back slope in centerline of ditch bottom.*

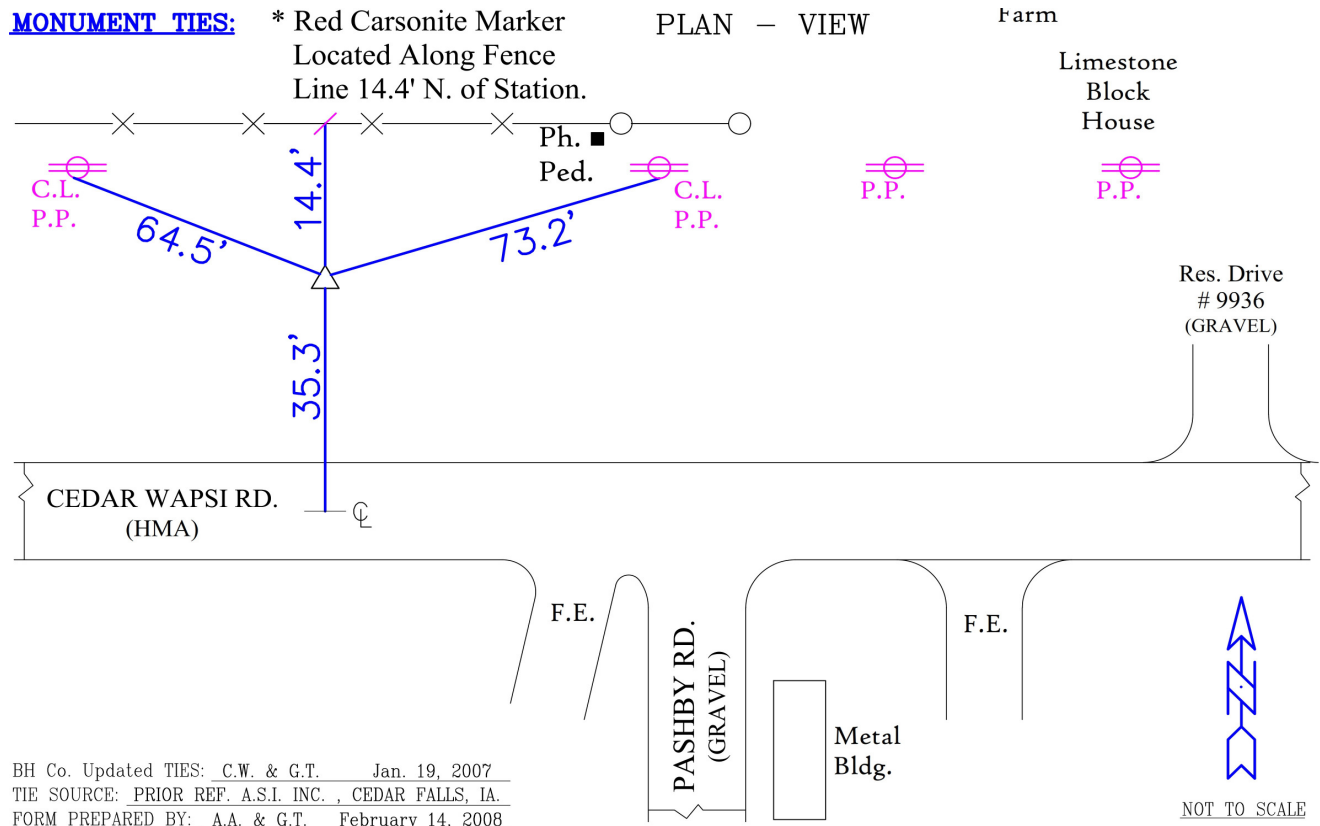
NAD 83(NA2011) Latitude: **N42°36'50.57984"** Longitude: **W92°32'03.57401"**  
NAVD 88 Ortho Height: **890.119sft** Ellip. Ht: **786.334sft** **Geoid18(Conus)**

Horizontal Datum: NAD 83(NA2011) - Vertical Datum: NAVD 1988

**Iowa North Zone (1401)** Northing: **3688303.220sft** Easting: **5181180.609sft**  
Mapping Angle: **0°39'16"** Combination Scale Factor: **0.9999082188**

Iowa Regional Coordinate System, Zone 5, Waterloo LCC

**IaRCS Zone 5** Northing: **8887026.140sft** Easting: **15423459.758sft**  
Mapping Angle: **-0°11'33"** Combination Scale Factor: **0.9999946080**



*This document was prepared by Dan Corbin, Inc. for Black Hawk County, Iowa.*



7088



Facing West

