

**Black Hawk County, Iowa****12/01/2020**

Units: US Survey Feet

Point ID: **7087**Stamping on Disk: **94-087**

Type of Monument: *Berntsen 5/8" fluted "Top Security" rod, 6ft long with 2.5" dia. aluminum survey cap, NGS style access cover.*

Physical Details: *Station is flush with ground surface on east side of drive. Station on east mowing limits.*

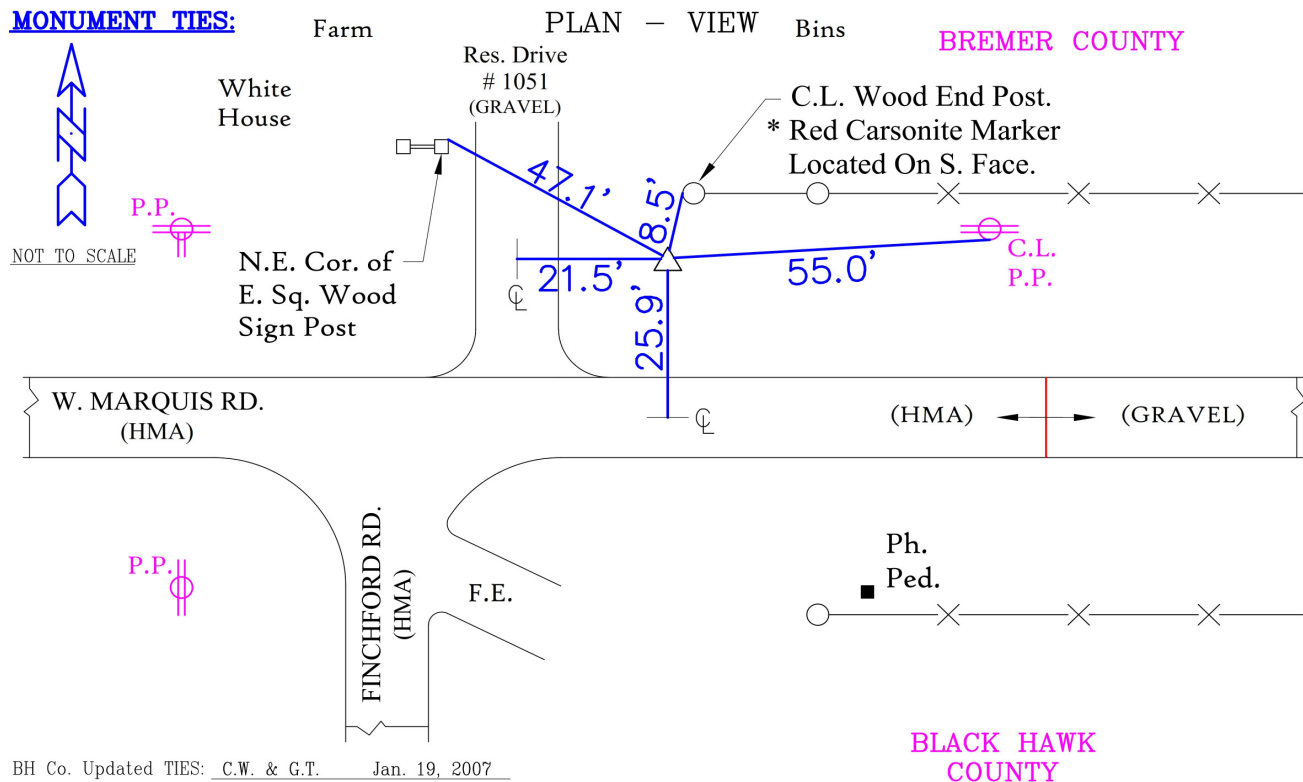
NAD 83(NA2011) Latitude: **N42°38'32.45522"** Longitude: **W92°32'37.28320"**  
NAVD 88 Ortho Height: **902.475sft** Ellip. Ht: **798.679sft** **Geoid18(Conus)**

Horizontal Datum: NAD 83(NA2011) - Vertical Datum: NAVD 1988

**Iowa North Zone (1401)** Northing: **3698586.900sft** Easting: **5178543.639sft**  
Mapping Angle: **0°38'53"** Combination Scale Factor: **0.9999072902**

Iowa Regional Coordinate System, Zone 5, Waterloo LCC

**IaRCS Zone 5** Northing: **8897348.574sft** Easting: **15420974.899sft**  
Mapping Angle: **-0°11'56"** Combination Scale Factor: **0.9999938308**



BH Co. Updated TIES: C.W. & G.T. Jan. 19, 2007  
TIE SOURCE: PRIOR REF. A.S.I. INC., CEDAR FALLS, IA.  
FORM PREPARED BY: A.A. & G.T. February 14, 2008

*This document was prepared by Dan Corbin, Inc. for Black Hawk County, Iowa.*



7087



Facing East

