

Black Hawk County, Iowa**12/01/2020**

Units: US Survey Feet

Point ID: **7086**Stamping on Disk: **94-086**

Type of Monument: *Berntsen 5/8" fluted "Top Security" rod, 6ft long with 2.5" dia. aluminum survey cap, NGS style access cover.*

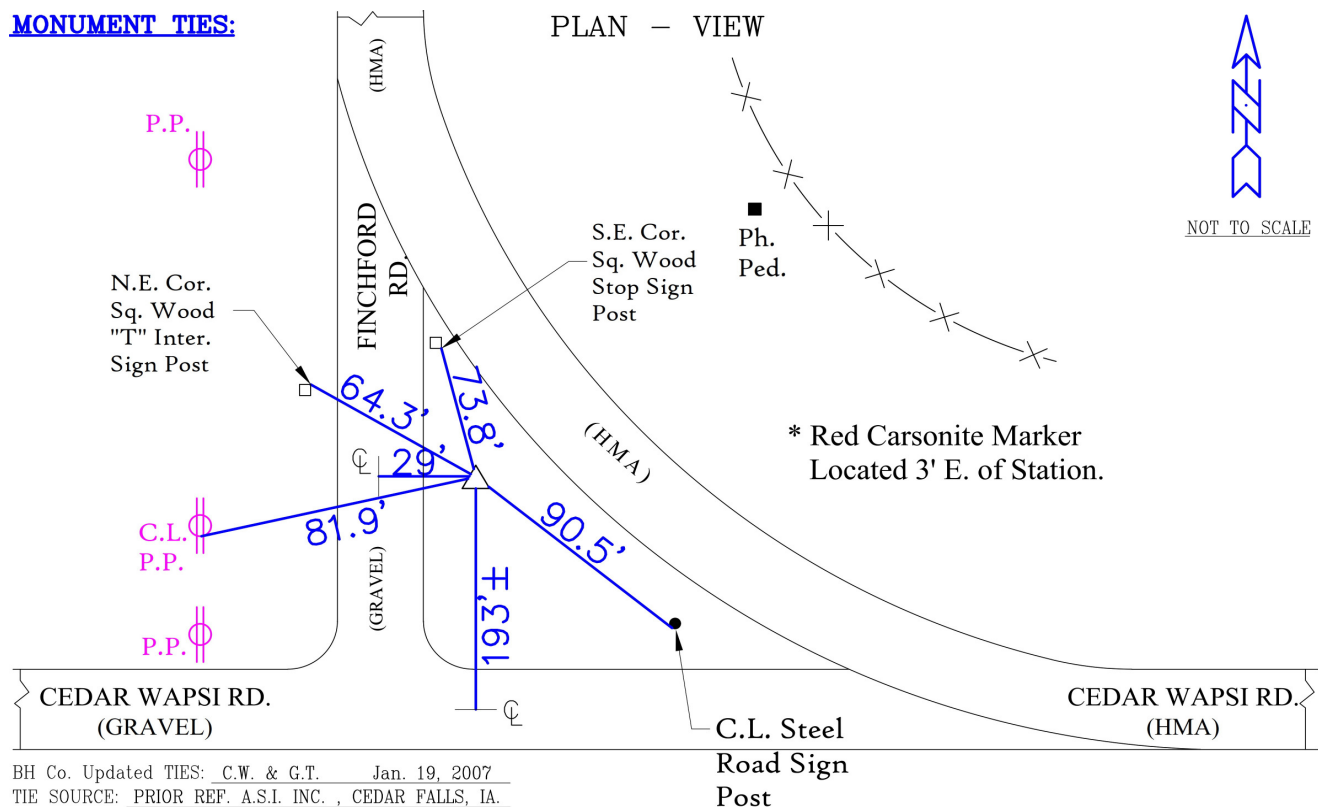
Physical Details: *Station is flush with ground surface and located at 2' east of west TBKS of grass ditch/median.*

NAD 83(NA2011) Latitude: **N42°36'51.79497"** Longitude: **W92°32'37.16349"**
NAVD 88 Ortho Height: **894.732sft** Ellip. Ht: **790.909sft** **Geoid18(Conus)**

Horizontal Datum: NAD 83(NA2011) - Vertical Datum: NAVD 1988

Iowa North Zone (1401) Northing: **3688397.672sft** Easting: **5178667.856sft**Mapping Angle: **0°38'53"** Combination Scale Factor: **0.9999079947**

Iowa Regional Coordinate System, Zone 5, Waterloo LCC

IaRCS Zone 5 Northing: **8887157.742sft** Easting: **15420948.459sft**Mapping Angle: **-0°11'56"** Combination Scale Factor: **0.9999943857****MONUMENT TIES:**

This document was prepared by Dan Corbin, Inc. for Black Hawk County, Iowa.

7086



Facing East

