

Black Hawk County, Iowa

Units: US Survey Feet

12/01/2020

Point ID: **7085**Stamping on Disk: **94-085**

Type of Monument: *Berntsen 5/8" fluted "Top Security" rod, 6ft long with 2.5" dia. aluminum survey cap, NGS style access cover.*

Physical Details: *Station is flush with ground surface in northwest corner of field entrance at TBKS.*

NAD 83(NA2011) Latitude: **N42°38'32.85340"** Longitude: **W92°33'20.40063"**
NAVD 88 Ortho Height: **979.050sft** Ellip. Ht: **875.201sft** **Geoid18(Conus)**

Horizontal Datum: NAD 83(NA2011) - Vertical Datum: NAVD 1988

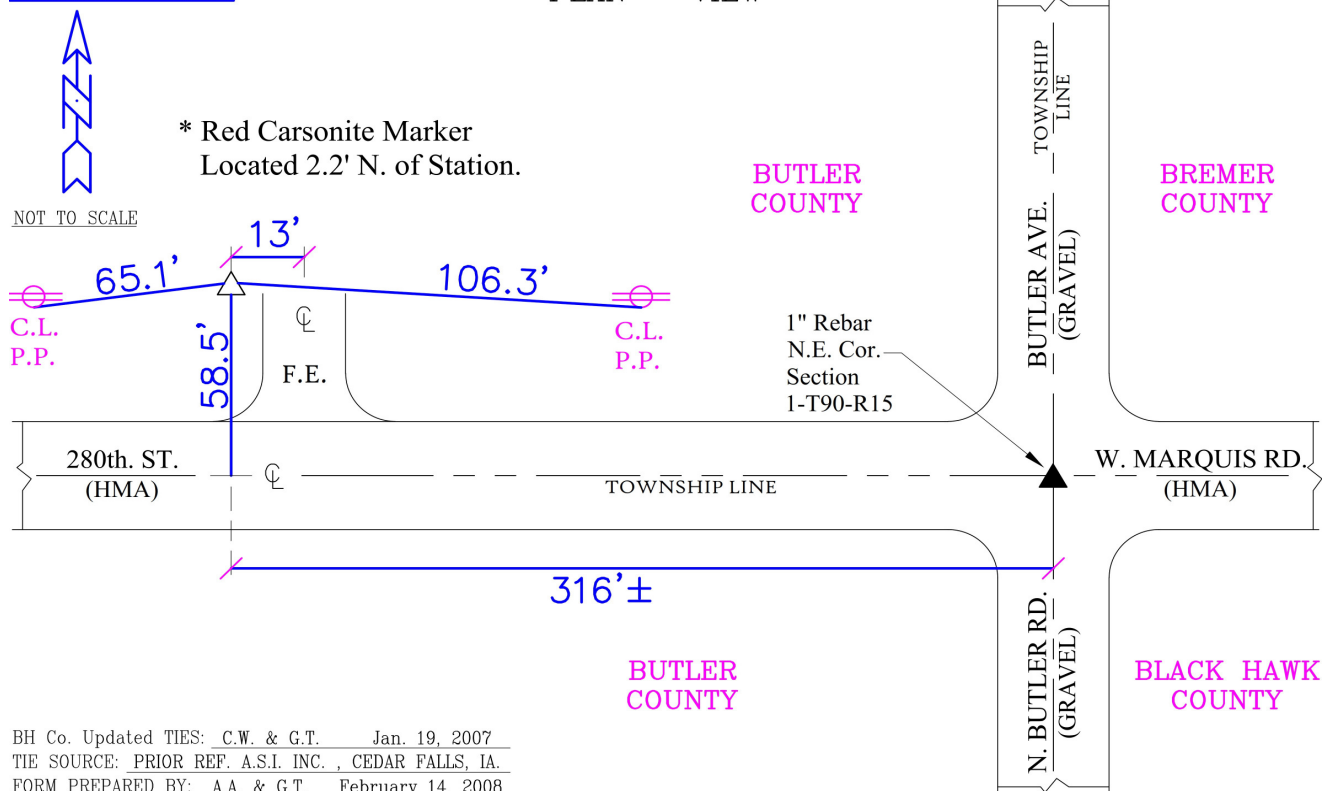
Iowa North Zone (1401) Northing: **3698590.983sft** Easting: **5175320.915sft**
Mapping Angle: **0°38'24"** Combination Scale Factor: **0.9999036319**

Iowa Regional Coordinate System, Zone 5, Waterloo LCC

IaRCS Zone 5 Northing: **8897400.307sft** Easting: **15417752.309sft**
Mapping Angle: **-0°12'26"** Combination Scale Factor: **0.9999901728**

MONUMENT TIES:

PLAN - VIEW



This document was prepared by Dan Corbin, Inc. for Black Hawk County, Iowa.

7085



Facing East

