

**Black Hawk County, Iowa****12/01/2020**

Units: US Survey Feet

Point ID: **7080**Stamping on Disk: **94-080**

Type of Monument: *Berntsen 5/8" fluted "Top Security" rod, 6ft long with 2.5" dia. aluminum survey cap, NGS style access cover.*

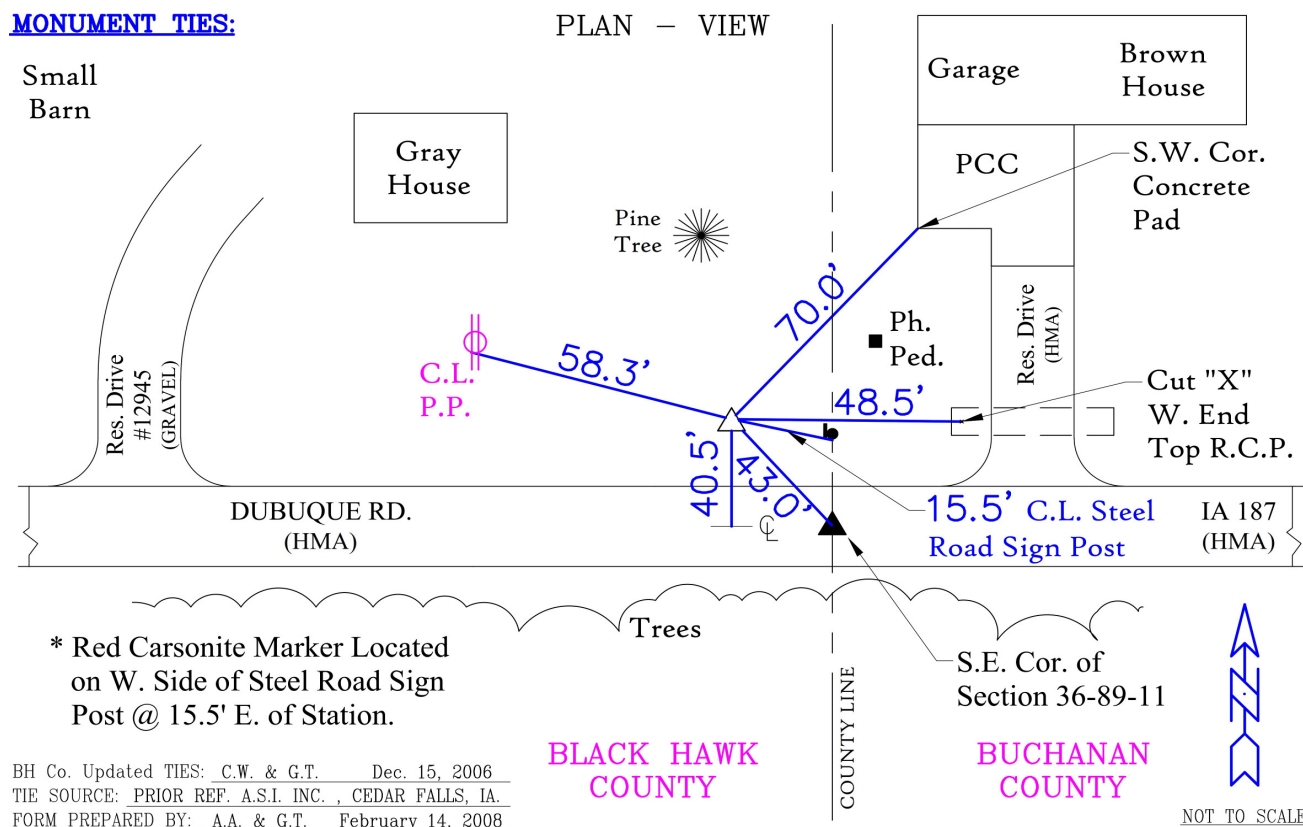
Physical Details: *Station is flush with ground surface at centerline mowed ditch.*

NAD 83(NA2011) Latitude: **N42°28'05.86895"** Longitude: **W92°04'53.41101"**  
 NAVD 88 Ortho Height: **958.647sft** Ellip. Ht: **857.200sft** Geoid18(Conus)

Horizontal Datum: NAD 83(NA2011) - Vertical Datum: NAVD 1988

Iowa North Zone (1401) Northing: **3636912.841sft** Easting: **5303948.669sft**Mapping Angle: **0°57'41"** Combination Scale Factor: **0.9999104189**

Iowa Regional Coordinate System, Zone 5, Waterloo LCC

IaRCS Zone 5 Northing: **8833821.637sft** Easting: **15545465.068sft**Mapping Angle: **0°06'51"** Combination Scale Factor: **0.9999960292****MONUMENT TIES:**

BH Co. Updated TIES: C.W. & G.T. Dec. 15, 2006  
 TIE SOURCE: PRIOR REF. A.S.I. INC., CEDAR FALLS, IA.  
 FORM PREPARED BY: A.A. & G.T. February 14, 2008

*This document was prepared by Dan Corbin, Inc. for Black Hawk County, Iowa.*



7080



Facing North

