

**Black Hawk County, Iowa**

Units: US Survey Feet

12/01/2020

Point ID: **7075**Stamping on Disk: **94-075**

Type of Monument: *Berntsen 5/8" fluted "Top Security" rod, 6ft long with 2.5" dia. aluminum survey cap, NGS style access cover.*

Physical Details: *Station is flush with ground surface at ditch bottom.*

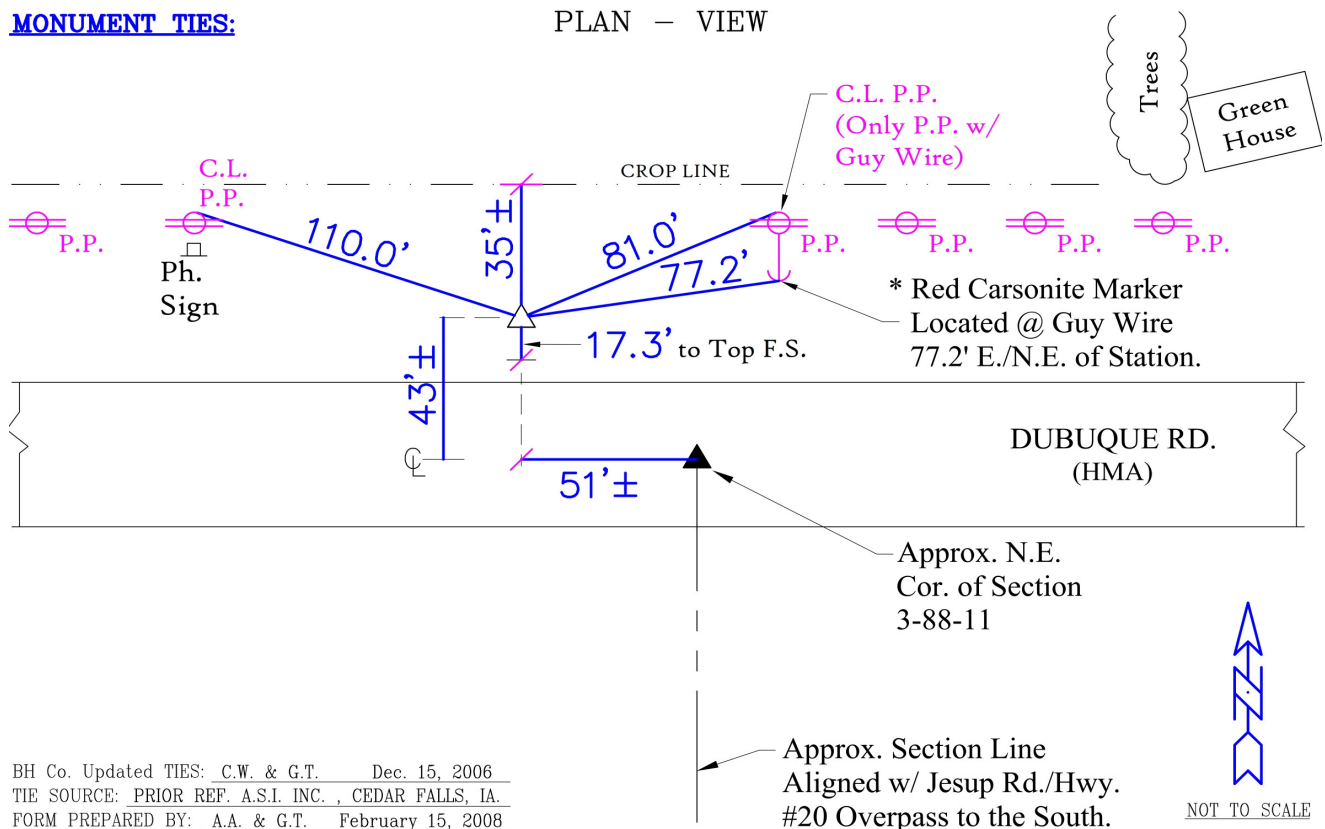
NAD 83(NA2011) Latitude: **N42°28'05.82466"** Longitude: **W92°06'11.85044"**  
 NAVD 88 Ortho Height: **962.218sft** Ellip. Ht: **860.711sft** Geoid18(Conus)

Horizontal Datum: NAD 83(NA2011) - Vertical Datum: NAVD 1988

**Iowa North Zone (1401)** Northing: **3636810.480sft** Easting: **5298070.864sft**  
 Mapping Angle: **0°56'48"** Combination Scale Factor: **0.9999102519**

Iowa Regional Coordinate System, Zone 5, Waterloo LCC

**IaRCS Zone 5** Northing: **8833806.196sft** Easting: **15539585.888sft**  
 Mapping Angle: **0°05'58"** Combination Scale Factor: **0.9999958621**

**MONUMENT TIES:****PLAN - VIEW**

*This document was prepared by Dan Corbin, Inc. for Black Hawk County, Iowa.*

7075



Facing North

