

Black Hawk County, Iowa**12/01/2020**

Units: US Survey Feet

Point ID: **7073**Stamping on Disk: **94-073**

Type of Monument: *Berntsen 5/8" fluted "Top Security" rod, 6ft long with 2.5" dia. aluminum survey cap, NGS style access cover.*

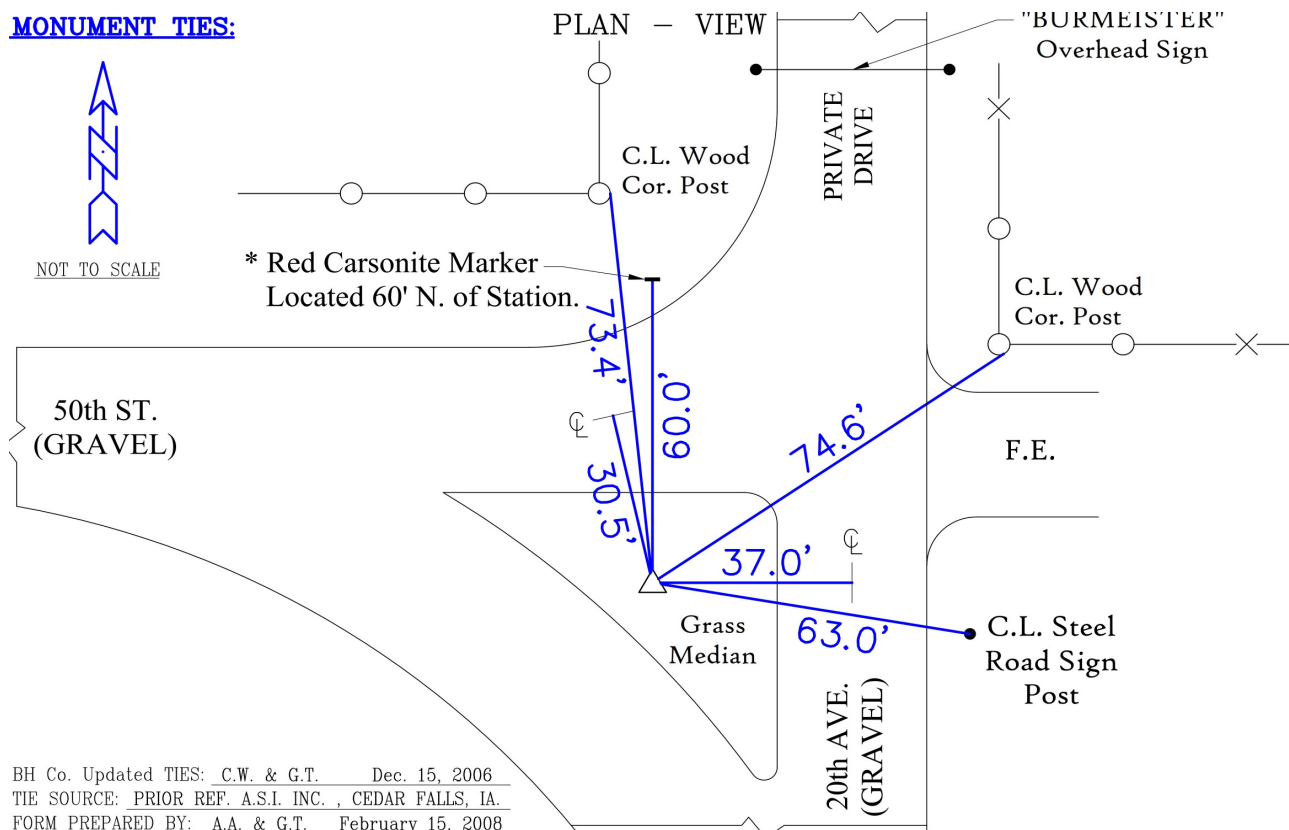
Physical Details: *Located in Benton Co. station is flush with ground surface in grass median at gravel road intersection.*

NAD 83(NA2011) Latitude: **N42°17'36.32266"** Longitude: **W92°06'13.65869"**
NAVD 88 Ortho Height: **852.599sft** Ellip. Ht: **750.984sft** **Geoid18(Conus)**

Horizontal Datum: NAD 83(NA2011) - Vertical Datum: NAVD 1988

Iowa North Zone (1401) Northing: **3573093.497sft** Easting: **5298987.742sft**Mapping Angle: **0°56'47"**Combination Scale Factor: **0.9999306789**

Iowa Regional Coordinate System, Zone 5, Waterloo LCC

IaRCS Zone 5 Northing: **8770077.195sft** Easting: **15539560.535sft**Mapping Angle: **0°05'57"**Combination Scale Factor: **1.0000153585****MONUMENT TIES:**

This document was prepared by Dan Corbin, Inc. for Black Hawk County, Iowa.

7073



Facing East

