

Black Hawk County, Iowa**12/01/2020**

Units: US Survey Feet

Point ID: **7072**Stamping on Disk: **94-072**

Type of Monument: *Berntsen 5/8" fluted "Top Security" rod, 6ft long with 2.5" dia. aluminum survey cap, NGS style access cover.*

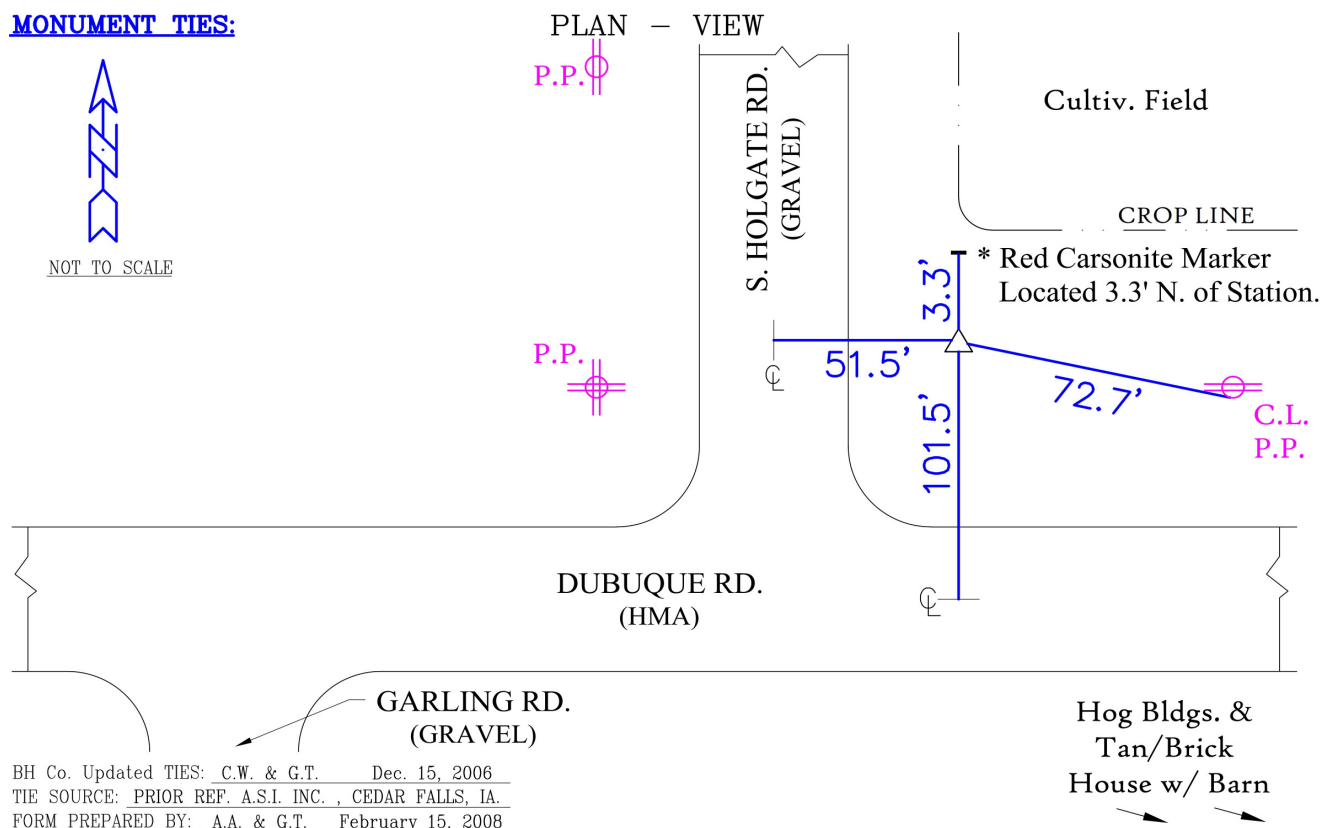
Physical Details: *Station is flush with ground surface just south of southwest corner of cultivated field.*

NAD 83(NA2011) Latitude: **N42°28'06.67432"** Longitude: **W92°07'13.54232"**
NAVD 88 Ortho Height: **956.294sft** Ellip. Ht: **854.732sft** **Geoid18(Conus)**

Horizontal Datum: NAD 83(NA2011) - Vertical Datum: NAVD 1988

Iowa North Zone (1401) Northing: **3636820.564sft** Easting: **5293446.545sft**Mapping Angle: **0°56'06"**Combination Scale Factor: **0.9999105234**

Iowa Regional Coordinate System, Zone 5, Waterloo LCC

IaRCS Zone 5 Northing: **8833884.661sft** Easting: **15534961.828sft**Mapping Angle: **0°05'16"**Combination Scale Factor: **0.9999961349****MONUMENT TIES:**

This document was prepared by Dan Corbin, Inc. for Black Hawk County, Iowa.

7072



Facing North

