

Black Hawk County, Iowa

Units: US Survey Feet

12/01/2020

Point ID: **7070**Stamping on Disk: **94-070**

Type of Monument: *Berntsen 5/8" fluted "Top Security" rod, 6ft long with 2.5" dia. aluminum survey cap, NGS style access cover.*

Physical Details: *Station is flush with ground surface in high ditch bottom.*

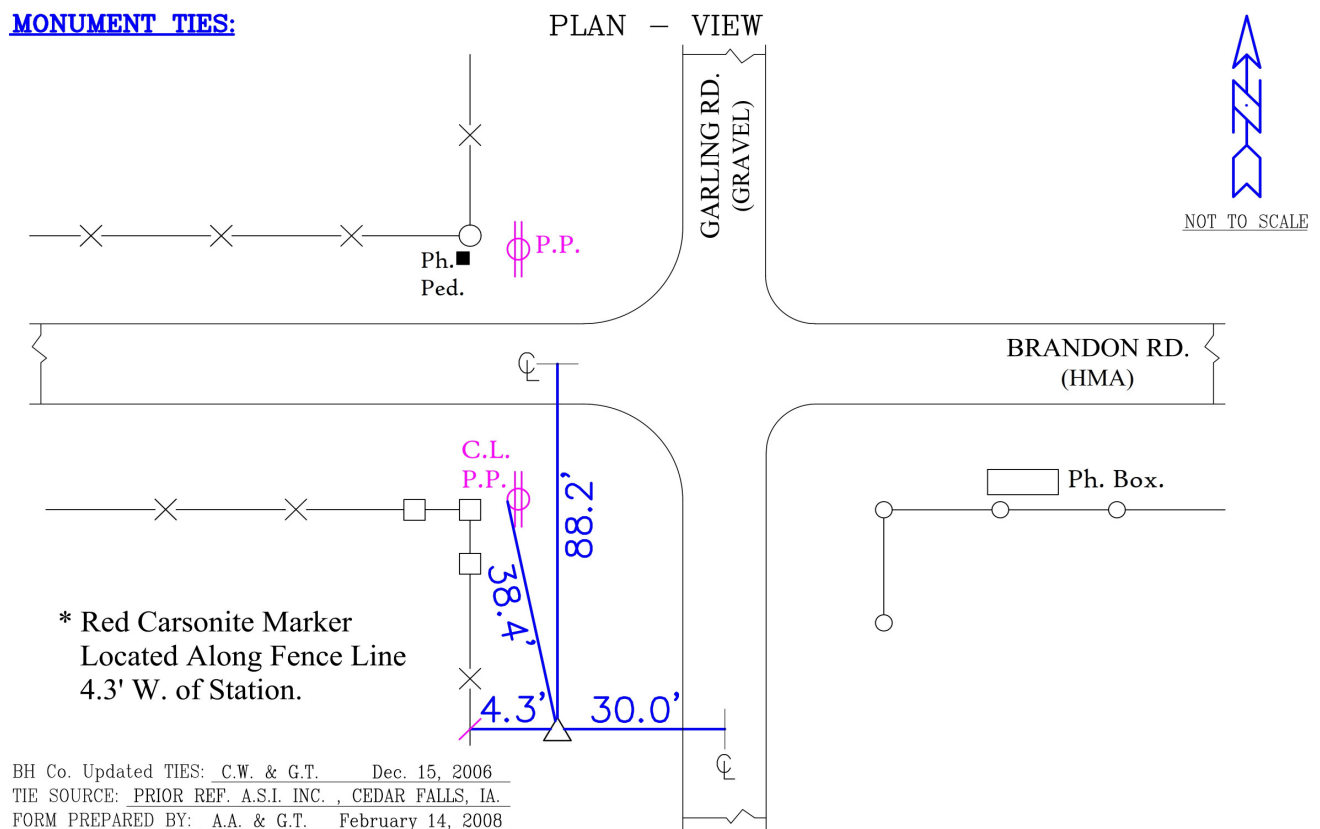
NAD 83(NA2011) Latitude: **N42°20'25.59496"** Longitude: **W92°07'24.02318"**
NAVD 88 Ortho Height: **887.922sft** Ellip. Ht: **786.357sft** **Geoid18(Conus)**

Horizontal Datum: NAD 83(NA2011) - Vertical Datum: NAVD 1988

Iowa North Zone (1401) Northing: **3590139.562sft** Easting: **5293421.185sft**
Mapping Angle: **0°55'59"** Combination Scale Factor: **0.9999239979**

Iowa Regional Coordinate System, Zone 5, Waterloo LCC

IaRCS Zone 5 Northing: **8787205.157sft** Easting: **15534246.182sft**
Mapping Angle: **0°05'09"** Combination Scale Factor: **1.0000089273**

MONUMENT TIES:

This document was prepared by Dan Corbin, Inc. for Black Hawk County, Iowa.

7070



Facing West

