

**Black Hawk County, Iowa****12/01/2020**

Units: US Survey Feet

Point ID: **7069**Stamping on Disk: **94-069**

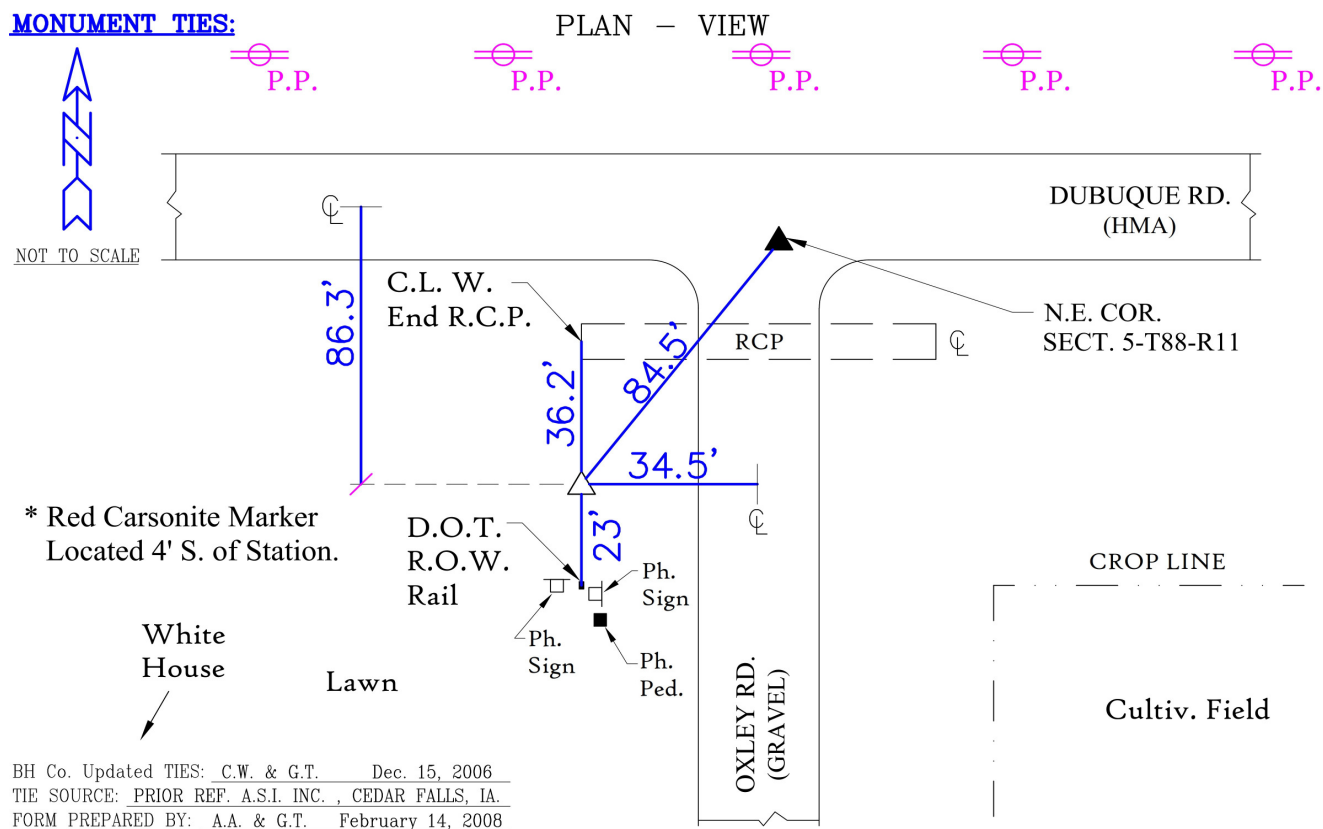
Type of Monument: *Berntsen 5/8" fluted "Top Security" rod, 6ft long with 2.5" dia. aluminum survey cap, NGS style access cover.*

Physical Details: *Station is flush with ground surface located at ditch bottom.*

NAD 83(NA2011) Latitude: **N42°28'05.32971"** Longitude: **W92°08'32.45449"**  
NAVD 88 Ortho Height: **949.635sft** Ellip. Ht: **847.995sft** Geoid18(Conus)

Horizontal Datum: NAD 83(NA2011) - Vertical Datum: NAVD 1988  
**Iowa North Zone (1401)** Northing: **3636588.728sft** Easting: **5287535.403sft**  
Mapping Angle: **0°55'13"** Combination Scale Factor: **0.9999108680**

Iowa Regional Coordinate System, Zone 5, Waterloo LCC  
**IaRCS Zone 5** Northing: **8833740.240sft** Easting: **15529047.398sft**  
Mapping Angle: **0°04'23"** Combination Scale Factor: **0.9999964775**



*This document was prepared by Dan Corbin, Inc. for Black Hawk County, Iowa.*

7069



Facing South

