

Black Hawk County, Iowa

12/01/2020

Units: US Survey Feet

Point ID: **7067**Stamping on Disk: **94-067**

Type of Monument: *Berntsen 5/8" fluted "Top Security" rod, 6ft long with 2.5" dia. aluminum survey cap, NGS style access cover.*

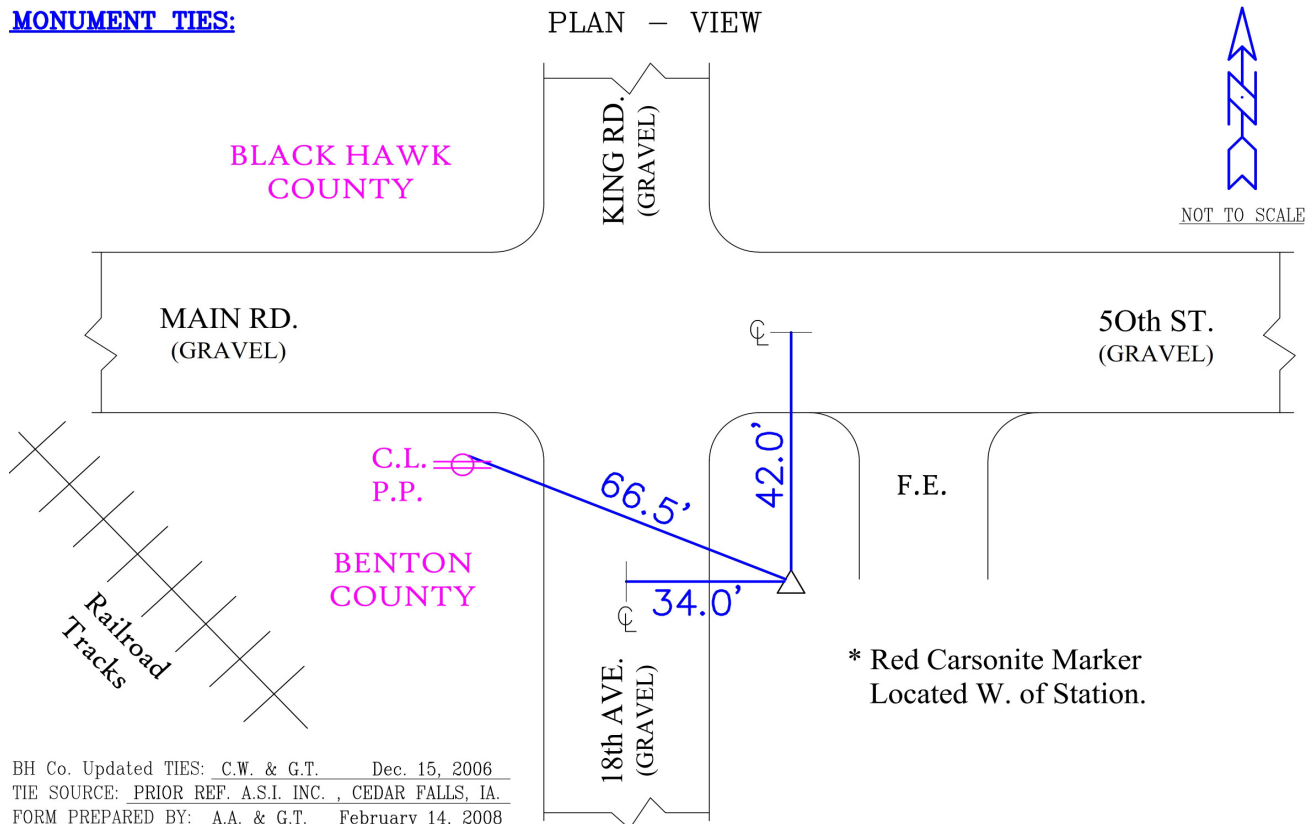
Physical Details: *Station is flush with ground surface at TBKS corner, Sta. has a roadstone ring around it.*

NAD 83(NA2011) Latitude: **N42°17'50.32956"** Longitude: **W92°08'32.67281"**
NAVD 88 Ortho Height: **824.377sft** Ellip. Ht: **722.636sft** **Geoid18(Conus)**

Horizontal Datum: NAD 83(NA2011) - Vertical Datum: NAVD 1988

Iowa North Zone (1401) Northing: **3574341.045sft** Easting: **5288518.747sft**Mapping Angle: **0°55'12"**Combination Scale Factor: **0.9999315957**

Iowa Regional Coordinate System, Zone 5, Waterloo LCC

IaRCS Zone 5 Northing: **8771479.521sft** Easting: **15529110.247sft**Mapping Angle: **0°04'22"**Combination Scale Factor: **1.0000162961****MONUMENT TIES:**

This document was prepared by Dan Corbin, Inc. for Black Hawk County, Iowa.

7067



Facing Southeast

