

Black Hawk County, Iowa**12/01/2020**

Units: US Survey Feet

Point ID: **7066**Stamping on Disk: **94-066**

Type of Monument: *Berntsen 5/8" fluted "Top Security" rod, 6ft long with 2.5" dia. aluminum survey cap, NGS style access cover.*

Physical Details: *Station is flush with ground surface of mowed lawn.*

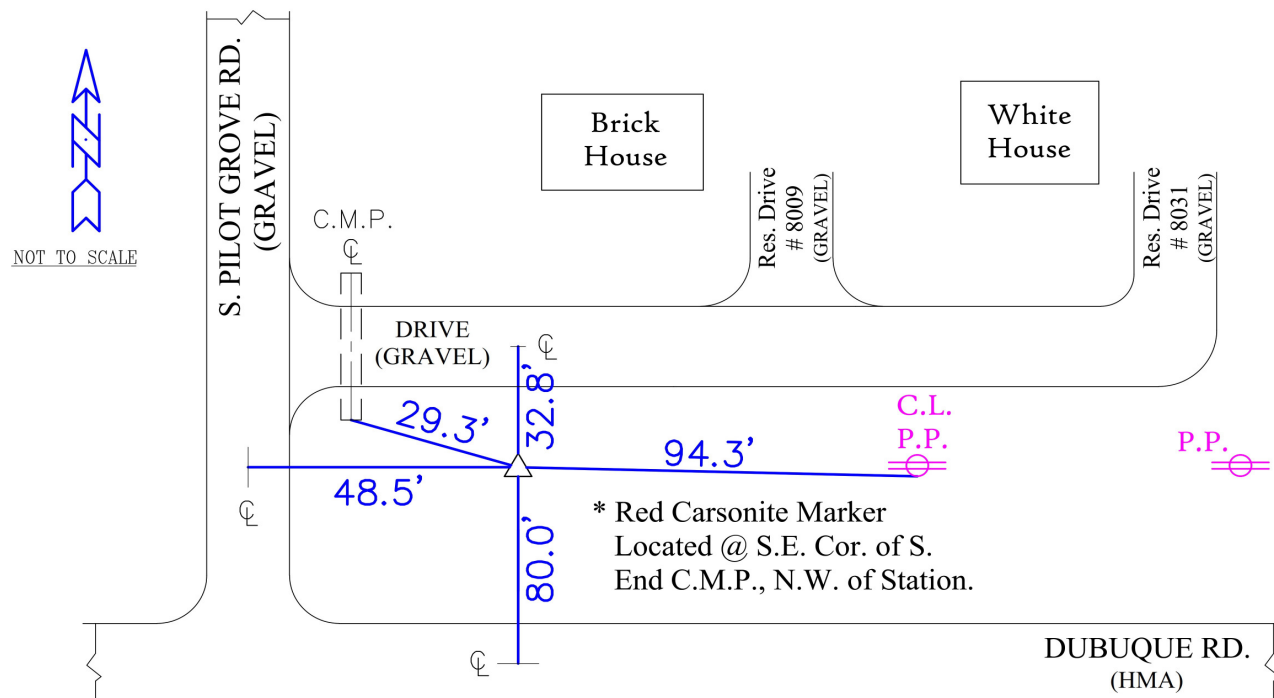
NAD 83(NA2011) Latitude: **N42°28'07.79596"** Longitude: **W92°10'44.85590"**
NAVD 88 Ortho Height: **950.158sft** Ellip. Ht: **848.385sft** Geoid18(Conus)

Horizontal Datum: NAD 83(NA2011) - Vertical Datum: NAVD 1988
Iowa North Zone (1401) Northing: **3636681.162sft** Easting: **5277609.814sft**
Mapping Angle: **0°53'43"** Combination Scale Factor: **0.9999108080**

Iowa Regional Coordinate System, Zone 5, Waterloo LCC
IaRCS Zone 5 Northing: **8833979.443sft** Easting: **15519123.411sft**
Mapping Angle: **0°02'53"** Combination Scale Factor: **0.9999964211**

MONUMENT TIES:

PLAN - VIEW



BH Co. Updated TIES: C.W. & G.T. Dec. 18, 2006
TIE SOURCE: PRIOR REF. A.S.I. INC., CEDAR FALLS, IA.
FORM PREPARED BY: A.A. & G.T. February 14, 2008

This document was prepared by Dan Corbin, Inc. for Black Hawk County, Iowa.

7066



Facing North

