

Black Hawk County, Iowa

Units: US Survey Feet

12/01/2020

Point ID: **7065**Stamping on Disk: **94-065**

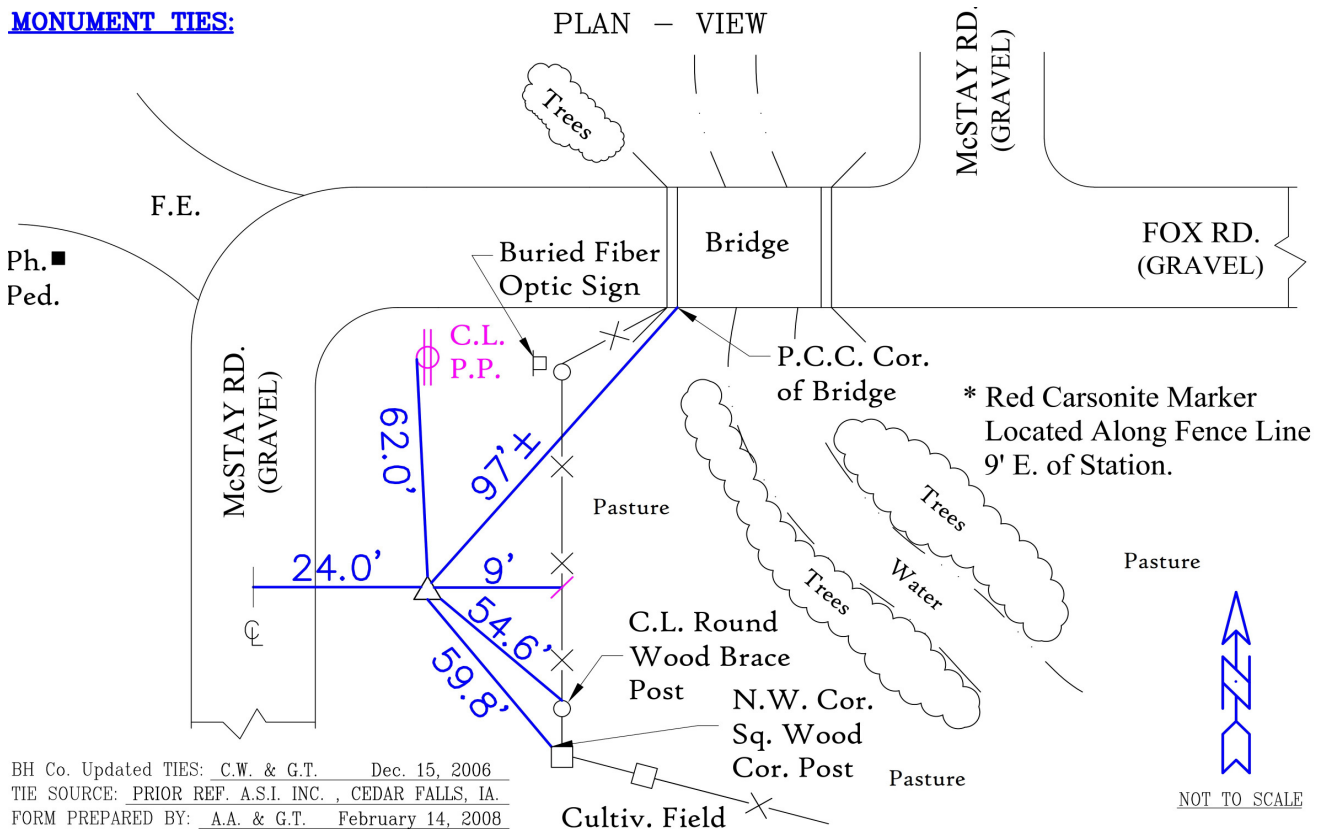
Type of Monument: *Berntsen 5/8" fluted "Top Security" rod, 6ft long with 2.5" dia. aluminum survey cap, NGS style access cover.*

Physical Details: *Station is flush with ground surface at centerline of ditch bottom.*

NAD 83(NA2011) Latitude: **N42°25'40.00389"** Longitude: **W92°10'51.27021"**
NAVD 88 Ortho Height: **869.648sft** Ellip. Ht: **767.881sft** **Geoid18(Conus)**

Horizontal Datum: NAD 83(NA2011) - Vertical Datum: NAVD 1988
Iowa North Zone (1401) Northing: **3621714.639sft** Easting: **5277362.583sft**
Mapping Angle: **0°53'38"** Combination Scale Factor: **0.9999173835**

Iowa Regional Coordinate System, Zone 5, Waterloo LCC
IaRCS Zone 5 Northing: **8819016.932sft** Easting: **15518654.874sft**
Mapping Angle: **0°02'49"** Combination Scale Factor: **1.0000027781**

MONUMENT TIES:

This document was prepared by Dan Corbin, Inc. for Black Hawk County, Iowa.

7065



Facing East

