

Black Hawk County, Iowa

Units: US Survey Feet

12/01/2020

Point ID: **7064**Stamping on Disk: **94-064**

Type of Monument: *Berntsen 5/8" fluted "Top Security" rod, 6ft long with 2.5" dia. aluminum survey cap, NGS style access cover.*

Physical Details: *Station is flush with ground surface near northwest edge of grass F.E. at southwest corner of road intersection.*

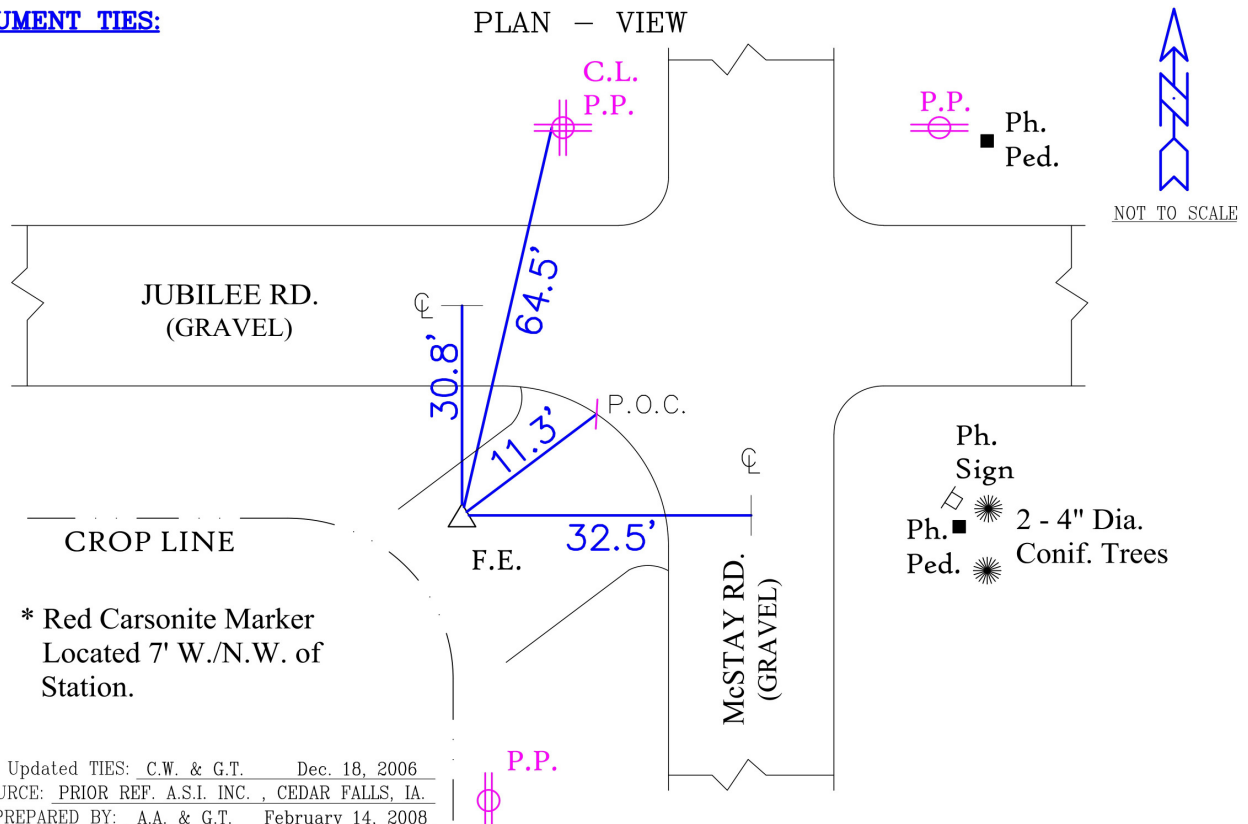
NAD 83(NA2011) Latitude: **N42°23'04.37557"** Longitude: **W92°10'53.38480"**
NAVD 88 Ortho Height: **904.970sft** Ellip. Ht: **803.213sft** **Geoid18(Conus)**

Horizontal Datum: NAD 83(NA2011) - Vertical Datum: NAVD 1988

Iowa North Zone (1401) Northing: **3605960.055sft** Easting: **5277449.717sft**
Mapping Angle: **0°53'37"** Combination Scale Factor: **0.9999191179**

Iowa Regional Coordinate System, Zone 5, Waterloo LCC

IaRCS Zone 5 Northing: **8803261.439sft** Easting: **15518509.042sft**
Mapping Angle: **0°02'47"** Combination Scale Factor: **1.0000042820**

MONUMENT TIES:

This document was prepared by Dan Corbin, Inc. for Black Hawk County, Iowa.

7064



Facing West

