

Black Hawk County, Iowa

Units: US Survey Feet

12/01/2020

Point ID: **7063**Stamping on Disk: **2016-63R**

Type of Monument: *Berntsen 3/4" fluted "Top Security" rod, 6ft long with 3-1/4" dia. aluminum survey cap, NGS style access cover.*

Physical Details: *Station is flush with ground surface and aligned with old Brandon Road pavement.*

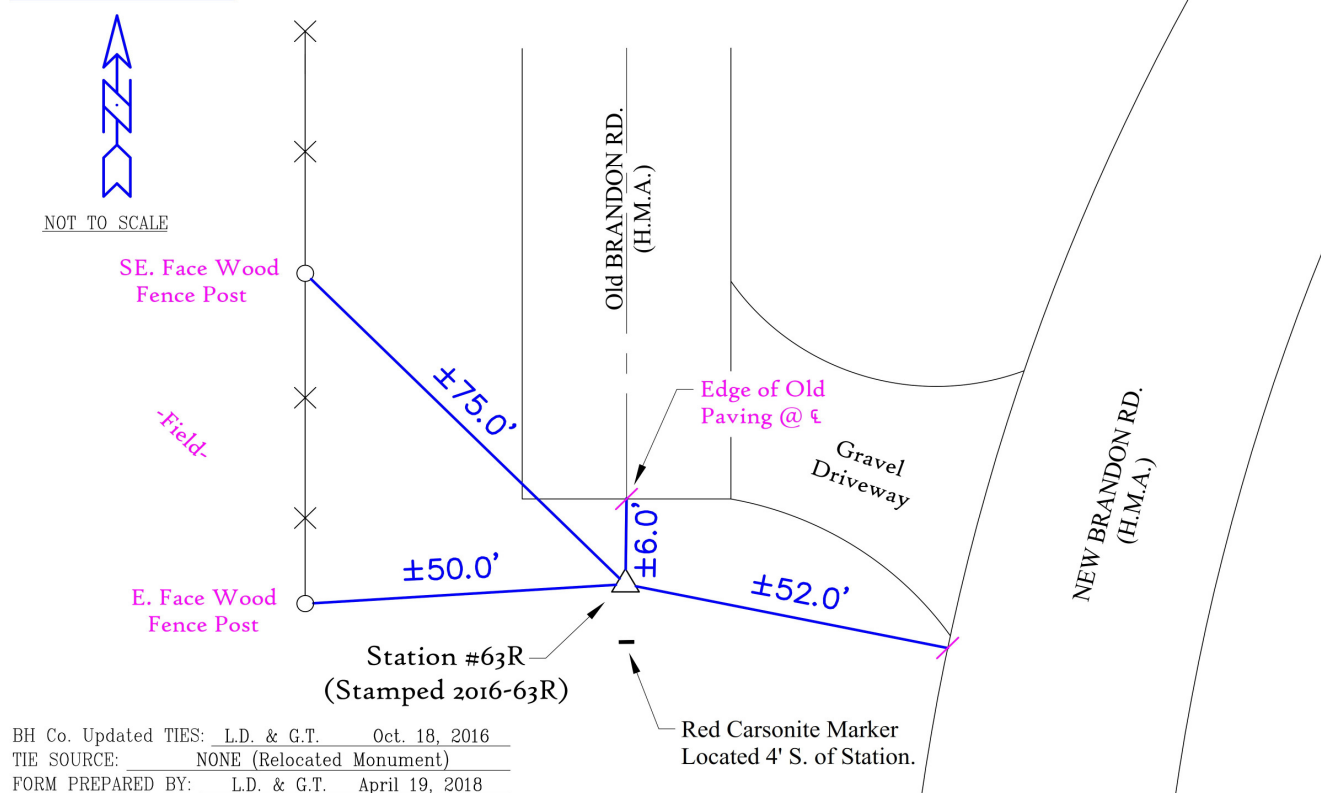
NAD 83(NA2011) Latitude: **N42°19'35.44081"** Longitude: **W92°10'35.72612"**
NAVD 88 Ortho Height: **810.840sft** Ellip. Ht: **709.015sft** **Geoid18(Conus)**

Horizontal Datum: NAD 83(NA2011) - Vertical Datum: NAVD 1988

Iowa North Zone (1401) Northing: **3584833.289sft** Easting: **5279105.846sft**
Mapping Angle: **0°53'49"** Combination Scale Factor: **0.9999291037**

Iowa Regional Coordinate System, Zone 5, Waterloo LCC

IaRCS Zone 5 Northing: **8782110.697sft** Easting: **15519852.727sft**
Mapping Angle: **0°02'59"** Combination Scale Factor: **1.0000139594**

MONUMENT TIES:**PLAN - VIEW**

This document was prepared by Dan Corbin, Inc. for Black Hawk County, Iowa.

7063



Facing South

