

**Black Hawk County, Iowa****12/01/2020**

Units: US Survey Feet

Point ID: **7061**Stamping on Disk: **94-061**

Type of Monument: *Berntsen 5/8" fluted "Top Security" rod, 6ft long with 2.5" dia. aluminum survey cap, NGS style access cover.*

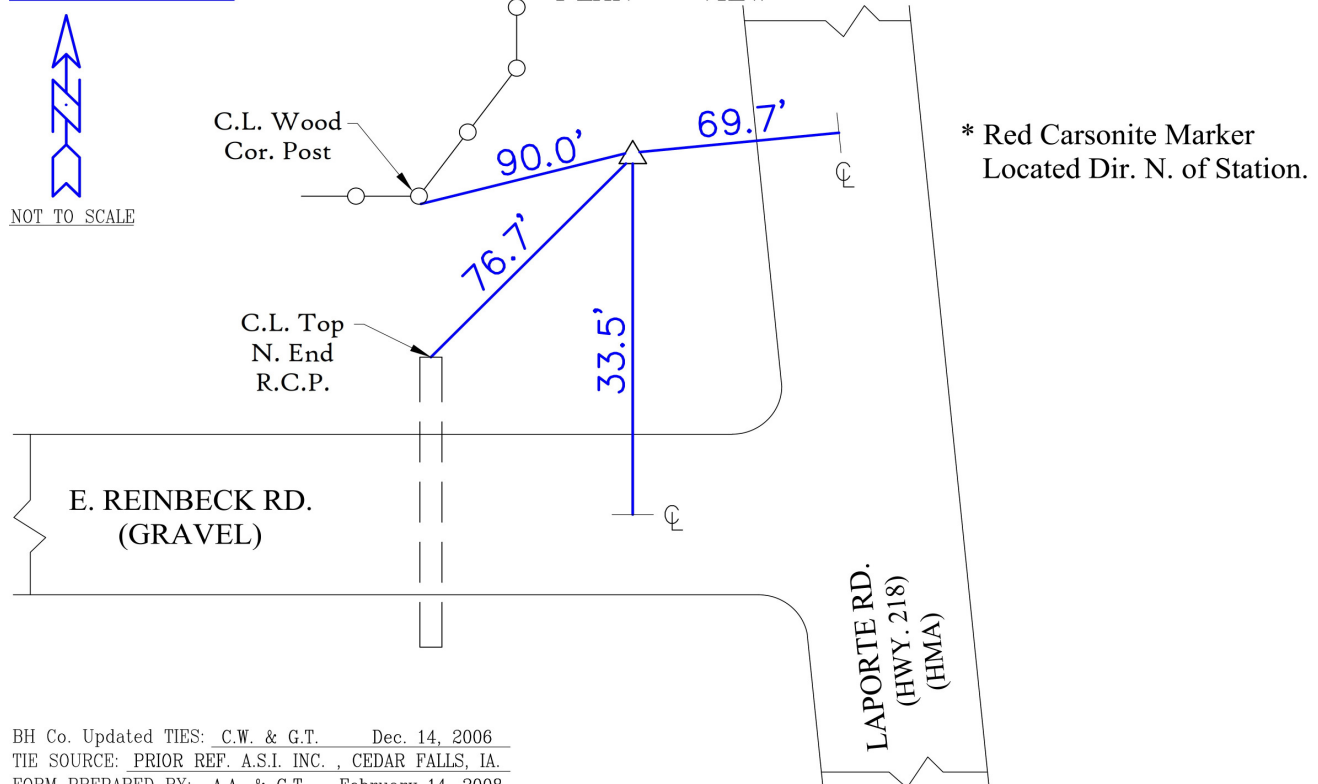
Physical Details: *Station is flush with ground surface in ditch bottom.*

NAD 83(NA2011) Latitude: **N42°19'35.63669"** Longitude: **W92°12'20.21588"**  
NAVD 88 Ortho Height: **813.099sft** Ellip. Ht: **711.128sft** **Geoid18(Conus)**

Horizontal Datum: NAD 83(NA2011) - Vertical Datum: NAVD 1988  
**Iowa North Zone (1401)** Northing: **3584731.599sft** Easting: **5271257.691sft**  
Mapping Angle: **0°52'38"** Combination Scale Factor: **0.9999289971**

Iowa Regional Coordinate System, Zone 5, Waterloo LCC

**IaRCS Zone 5** Northing: **8782125.061sft** Easting: **15512003.260sft**  
Mapping Angle: **0°01'48"** Combination Scale Factor: **1.0000138531**

**MONUMENT TIES:**

*This document was prepared by Dan Corbin, Inc. for Black Hawk County, Iowa.*



7061



Facing Northwest

