

Black Hawk County, Iowa**12/01/2020**

Units: US Survey Feet

Point ID: **7059**Stamping on Disk: **94-059R**

Type of Monument: *Berntsen 5/8" fluted "Top Security" rod, 6ft long with 2.5" dia. aluminum survey cap, NGS style access cover.*

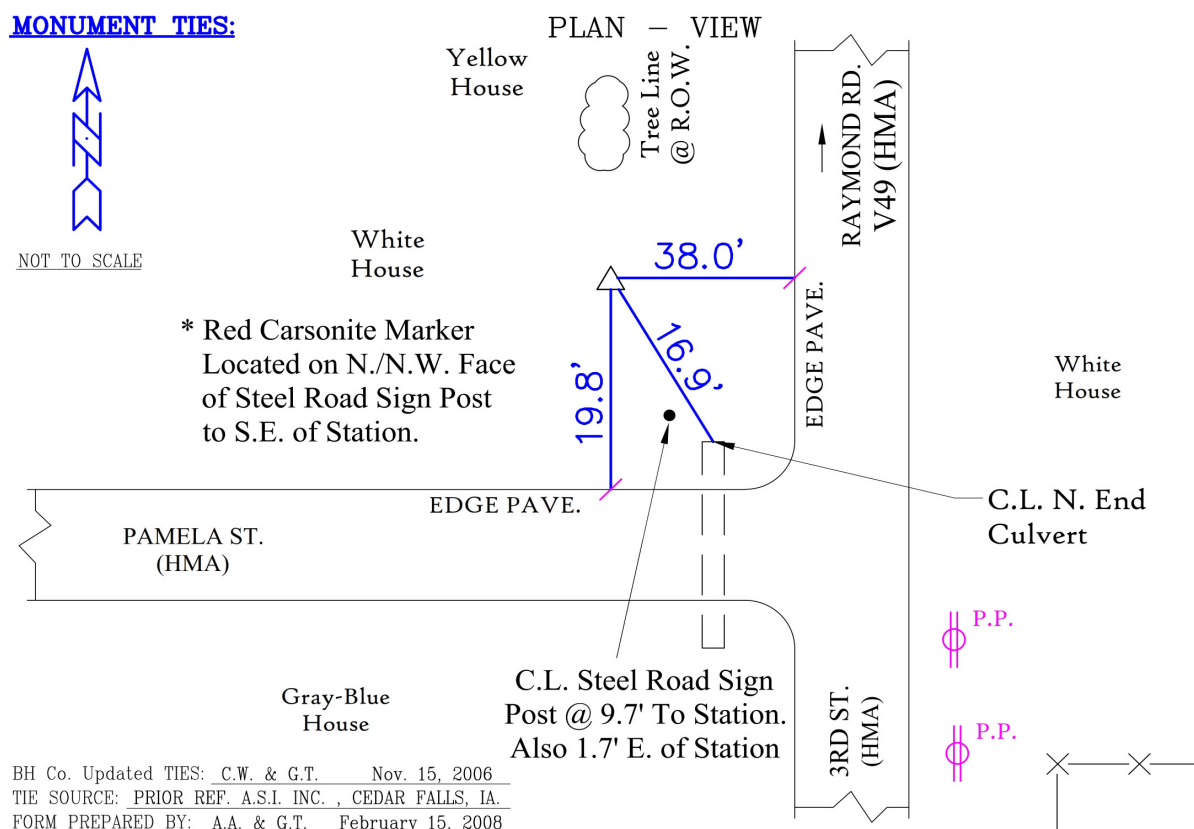
Physical Details: *Station is flush with ground surface at top of back slope.*

NAD 83(NA2011) Latitude: **N42°28'12.21005"** Longitude: **W92°13'09.86669"**
NAVD 88 Ortho Height: **923.239sft** Ellip. Ht: **821.317sft** **Geoid18(Conus)**

Horizontal Datum: NAD 83(NA2011) - Vertical Datum: NAVD 1988
Iowa North Zone (1401) Northing: **3636960.737sft** Easting: **5266736.498sft**
Mapping Angle: **0°52'04"** Combination Scale Factor: **0.9999120281**

Iowa Regional Coordinate System, Zone 5, Waterloo LCC

IaRCS Zone 5 Northing: **8834419.796sft** Easting: **15508254.487sft**
Mapping Angle: **0°01'15"** Combination Scale Factor: **0.9999976479**

MONUMENT TIES:

This document was prepared by Dan Corbin, Inc. for Black Hawk County, Iowa.

7059



Facing South

