

**Black Hawk County, Iowa****12/01/2020**

Units: US Survey Feet

Point ID: **7058**Stamping on Disk: **94-058**

Type of Monument: *Berntsen 5/8" fluted "Top Security" rod, 6ft long with 2.5" dia. aluminum survey cap, NGS style access cover.*

Physical Details: *Station is flush with ground surface at west edge of field entrance.*

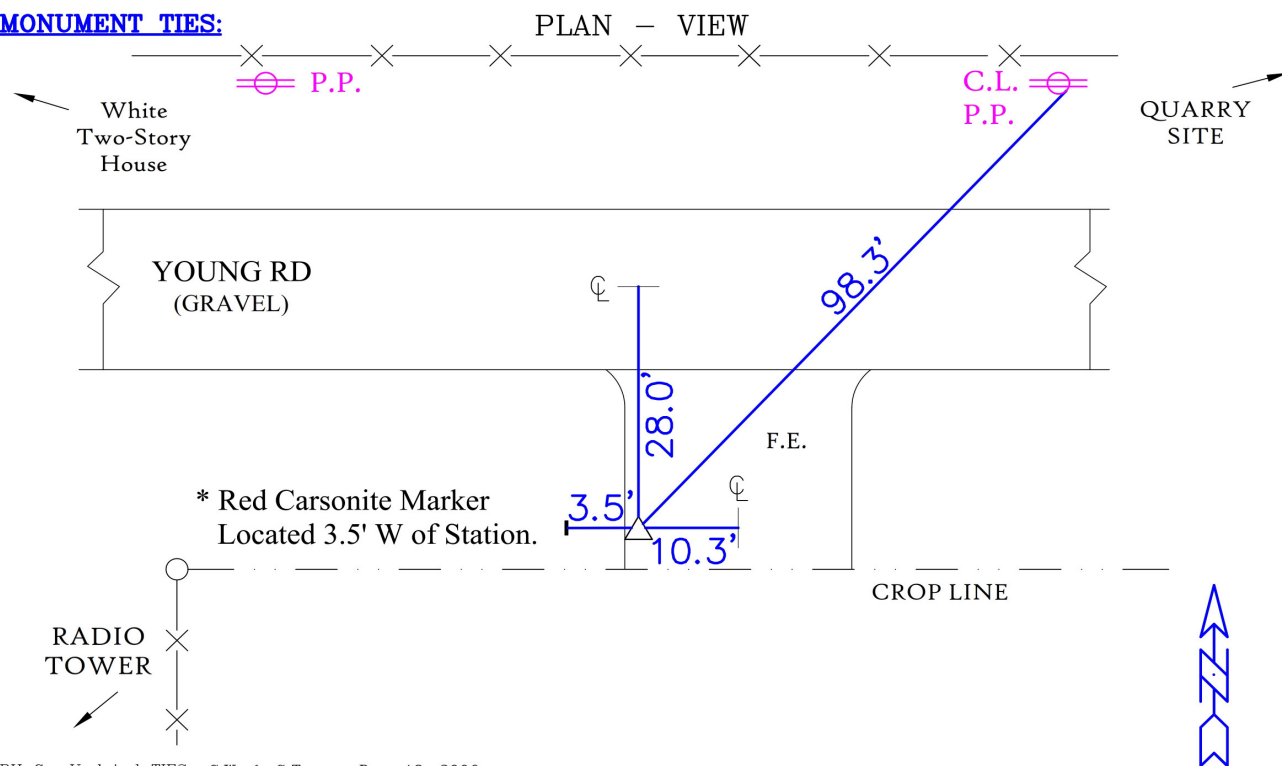
NAD 83(NA2011) Latitude: **N42°27'25.38226"** Longitude: **W92°12'31.97703"**  
NAVD 88 Ortho Height: **912.021sft** Ellip. Ht: **810.138sft** **Geoid18(Conus)**

Horizontal Datum: NAD 83(NA2011) - Vertical Datum: NAVD 1988

**Iowa North Zone (1401)** Northing: **3632264.142sft** Easting: **5269648.149sft**  
Mapping Angle: **0°52'30"** Combination Scale Factor: **0.9999133667**

Iowa Regional Coordinate System, Zone 5, Waterloo LCC

**IaRCS Zone 5** Northing: **8829680.258sft** Easting: **15511096.620sft**  
Mapping Angle: **0°01'40"** Combination Scale Factor: **0.9999989172**

**MONUMENT TIES:**

BH Co. Updated TIES: C.W. & G.T. Dec. 18, 2006  
TIE SOURCE: PRIOR REF. A.S.I. INC., CEDAR FALLS, IA.  
FORM PREPARED BY: A.A. & G.T. February 15, 2008

NOT TO SCALE

*This document was prepared by Dan Corbin, Inc. for Black Hawk County, Iowa.*

7058



Facing South

