

**Black Hawk County, Iowa****12/01/2020**

Units: US Survey Feet

Point ID: **7055**Stamping on Disk: **2006-055R**

Type of Monument: *Berntsen 3/4" fluted "Top Security" rod, 6ft long with 2.5" dia. aluminum survey cap, NGS style access cover.*

Physical Details: *Station is flush with shoulder surfacing at 3' west of south end of guardrail.*

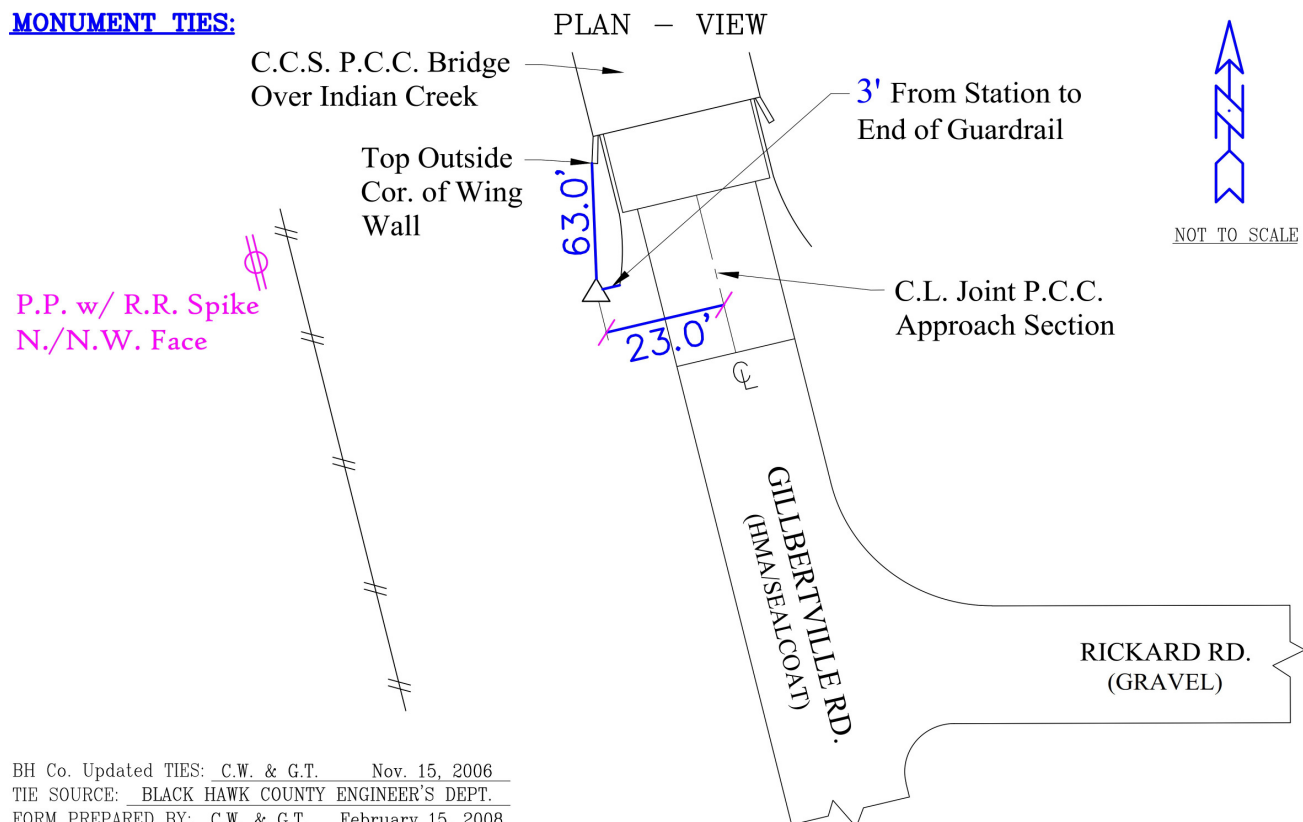
NAD 83(NA2011) Latitude: **N42°23'59.21202"** Longitude: **W92°12'06.51768"**  
NAVD 88 Ortho Height: **829.370sft** Ellip. Ht: **727.523sft** **Geoid18(Conus)**

Horizontal Datum: NAD 83(NA2011) - Vertical Datum: NAVD 1988

**Iowa North Zone (1401)** Northing: **3611425.471sft** Easting: **5271876.810sft**  
Mapping Angle: **0°52'47"** Combination Scale Factor: **0.9999214651**

Iowa Regional Coordinate System, Zone 5, Waterloo LCC

**IaRCS Zone 5** Northing: **8808809.130sft** Easting: **15513017.087sft**  
Mapping Angle: **0°01'58"** Combination Scale Factor: **1.0000067107**

**MONUMENT TIES:**

*This document was prepared by Dan Corbin, Inc. for Black Hawk County, Iowa.*

7055



Facing Northwest

